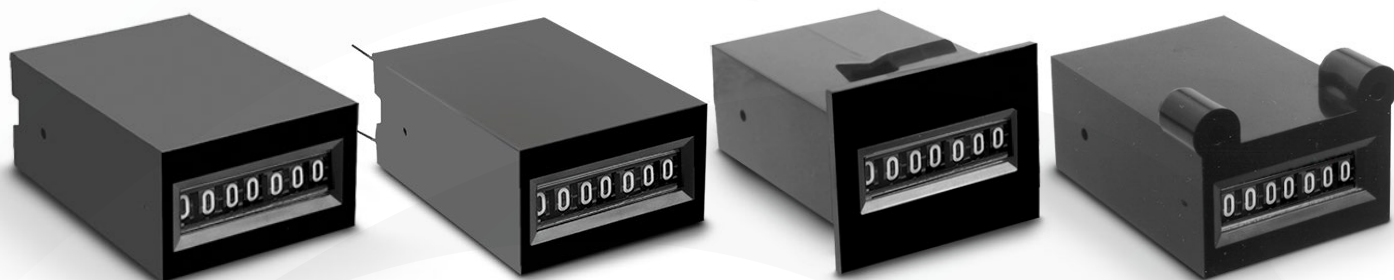


40 Series

Electromechanical Totalizer



The model 40 is a low cost, non-reset totalizer, available with 7 figures (white on black background). A wide choice of operating voltages and mountings make this product adaptable to most applications. The Model 40 is an ideal solution for applications that require low cost and product reliability.

Specifications

Figures	7 figures, white on black, 0.12" [3mm] high, 0.16" [4mm] with magnifying lens
Reset	Non-reset
Speed	600 counts/minute (min.50ms-on, 50ms-off) *on request* 1500 counts/minute (min 50ms-on, 50ms-off)
Voltage	5, 12 or 24 VDC (+10/-15% tolerance)
Frequency	50/60Hz
Power	1.4 watts AC, 1.0 watts DC (nominal)
Mount	Rear, behind the panel, snap-in, base or PCB mount
Terminations	(2)#22 AWG 221°F [105°C] wire leads, 10.5" [266.7mm] long
Operating Life	Beyond 3 million counts
Temp. Range	+23°F to +104°F [-5°C to + 40°C]
Weight	Less than 1oz [28g]

Key Features

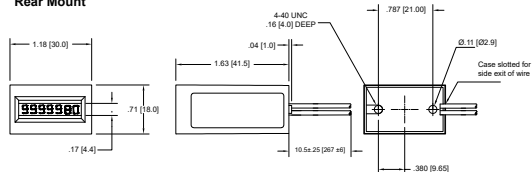
- Low cost
- Small size
- DC
- Options include:
 - Multiple mounting choices
 - Voltage ranges

Applications

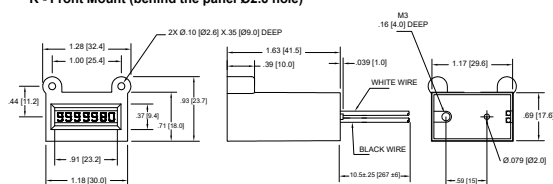
- Vending / gaming machines
- Photocopiers
- Items dispensed
- Office equipment

Dimensions

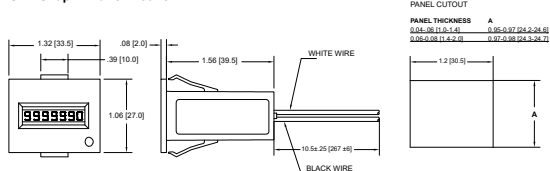
Rear Mount



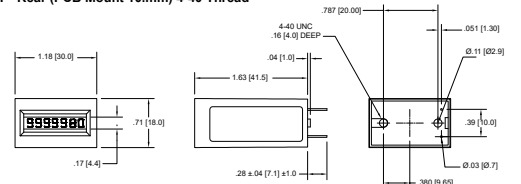
R - Front Mount (behind the panel Ø2.6 hole)



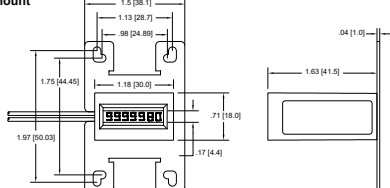
SR - Snap-In Panel Mount



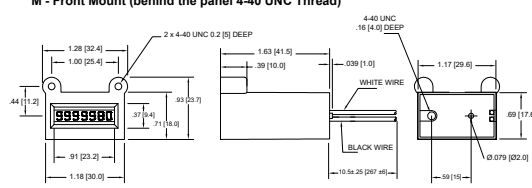
T - Rear (PCB Mount 10mm) 4-40 Thread



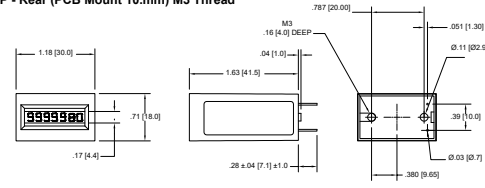
V - Base Mount



M - Front Mount (behind the panel 4-40 UNC Thread)



P - Rear (PCB Mount 10mm) M3 Thread



Part Numbers

Example: X X - 40 1 7 X - XX

Mounting

- M** Front Mount (behind the panel mount - 4-40 Thread)
- R** Front Mount (behind the panel mount - M3 Thread)
- SR** Snap-In Panel Mount
- T** Rear (PCB mount 10mm) 4-40 Thread
- P** Rear (PCB mount 10mm) M3 Thread
- V** Base Mount

Voltage

- 8** 24 DC
- 9** 12 DC
- 10** 6 DC
- 11** 5 DC

Model Number

- 40** Model number

Reset

- 1** Non-reset

Number of Figures

- 7** 7 figure

Suffix

- A** Counter set at 0000000
- B** LSD is white
- C** Diode
- D** 32" Lead Wires

CPS

- 10** CPS standard
- 25** CPS upon request



Mouser Electronics

Authorized Distributor

Click to View Pricing, Inventory, Delivery & Lifecycle Information:

[Trumeter:](#)

[M9-4017](#) [M9-4017B](#) [P8-4017](#) [P9-4017](#) [P9-4017A](#) [SR8-4017](#) [SR9-4017](#) [T11-4017](#) [T8-4017](#) [T9-4017](#) [V8-4017](#)
[V8-4017C](#) [SR9-4017-25](#) [T9-4017-25](#)