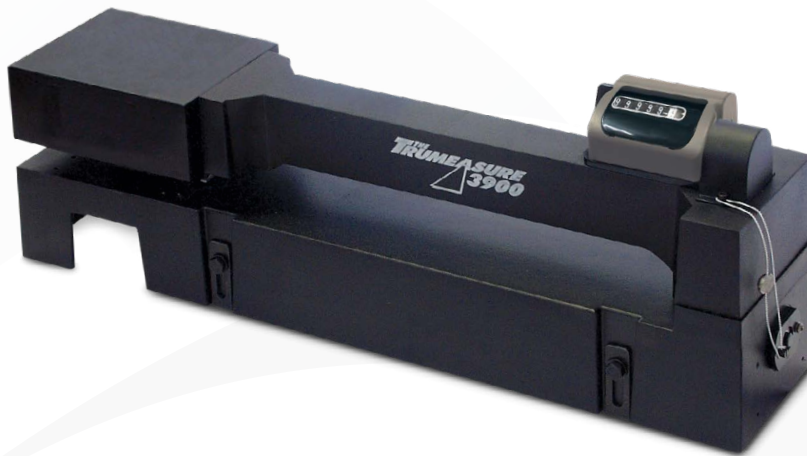


# 3900B

## Trumasure 3900 Fabric and Carpet Measurement



The Trumasure 3900 incorporates the very best features from over 60-years experience in the specialised length measurement sector. These machines incorporate exclusive new components to ensure reliability and continuing accuracy even when operating under the most demanding conditions.

Operates as the material passes between the measuring roller and the spring loaded pressure roller. The machine is activated by the movement of the material. All Trumasure machines incorporate an integral brake to prevent overspin at the end of the piece. The brake is automatically released when a further piece of material is passed between the rollers.

### Key Features

- Measures material up to 24mm (0.94in) thick
- Accommodates easily marked and/or abrasive materials (with special wheels)
- Accuracy 0.25%
- Accommodates pile up or no pile materials
- Optional encoder output
- Can be built into manufacturing and finishing processes
- Calibration certification on request at additional cost

### Applications

- Manufacturing and processing of textiles, films, plastics and papers
- Fabric inspection
- Cutting to length
- Tracking of material lengths through processing

## 3900 Specifications

**Measuring Thickness** Material up to 24mm (0.94in) thick

**Measuring Wheel Diameter** 0.25m

**Material types** Wide range of materials including paper, plastics, tubber sheeting, vinyl, wallpaper, textiles and carpets

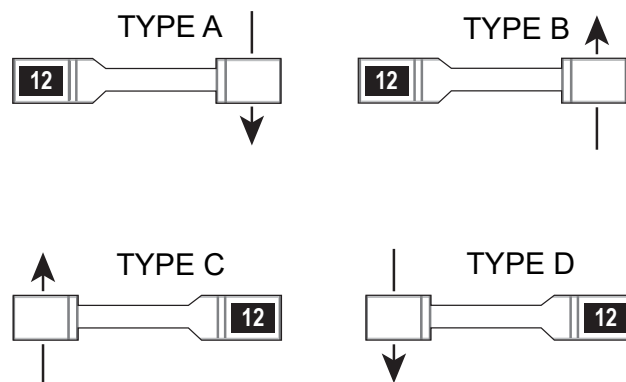
**Pile Materials** Pile up, pile down, no pile

**Weight** 8kg (17.6lb)

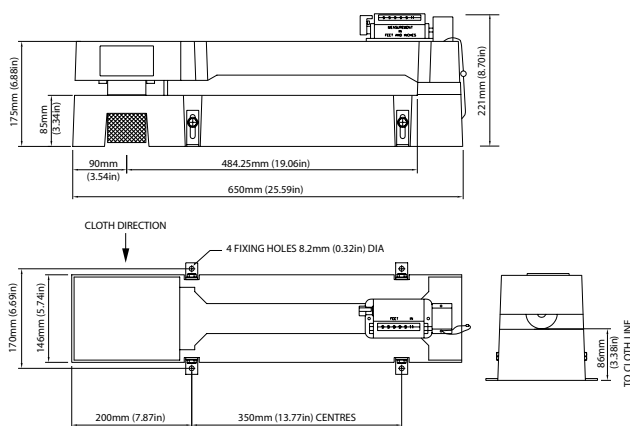
**Packed Dimensions** 730 x 220 x 300mm (28.7x8.6x11.8in)

**Material Direction Options**  
A: towards the operator; counter on left  
B: away from the operator; counter on left  
C: away from the operator; counter on right  
D: towards the operator; counter on right

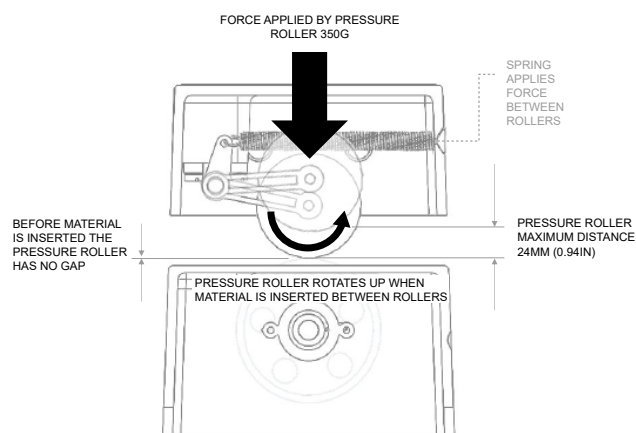
## Direction Chart



## Dimensions



## Pressure Roller



## Ordering Information

Use the part number for the unit of measurement and the type for material direction and counter position:

<b>3900B</b>	Fabric & Carpet Measurer 99999.9 Metres
<b>3905-1B</b>	Fabric & Carpet Measurer 99999'11" Feet & Inches
<b>3905-2B</b>	Fabric & Carpet Measurer 99999.7/8 Yards & Eighths

EXAMPLE: 3905-1B TYPE C

**TYPE A** for material travelling towards the operator; counter on left  
**TYPE B** for material travelling away from the operator; counter on left  
**TYPE C** for material travelling away from the operator; counter on right  
**TYPE D** for material travelling towards the operator; counter on right

<b>3900-E / DD250</b>	3900 Fabric & Carpet Measurer with 250PPR Encoder Output (electronic preset counter sold separately)
<b>3905-DD025</b>	3905 Fabric & Carpet Measurer with 025PPR Encoder Output (electronic preset counter sold separately)
<b>3905-DD250</b>	3905 Fabric & Carpet Measurer with 250PPR Encoder Output (electronic preset counter sold separately)
<b>3905-DD360</b>	3905 Fabric & Carpet Measurer with 360PPR Encoder Output (electronic preset counter sold separately)



# Mouser Electronics

Authorized Distributor

Click to View Pricing, Inventory, Delivery & Lifecycle Information:

[Trumeter:](#)

[3900B](#) [3900-DD250](#) [3905-1B](#) [3905-2B](#) [3905-DD025](#) [3905-DD250](#) [3905-DD300](#) [3905-DD360](#) [3905-1B TYPE D](#)  
[3905-1B TYPE B](#) [3900B TYPE C](#) [3905-2B Type C](#) [3900B TYPE B](#) [3905-1B TYPE C](#) [3900B TYPE D](#) [3905-2B Type](#)  
[B](#) [3905-2B TYPE A](#) [3900B TYPE A](#) [3905-1B TYPE A](#) [3905-2B TYPE D](#)