



**UL**  
E55826

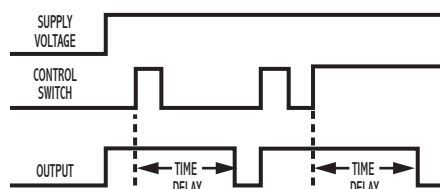
## Energy Conservation Timer Solid-State Output

### SPECIFICATIONS

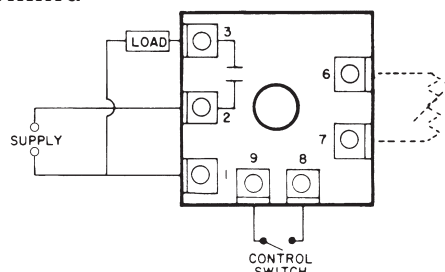
<b>TIMING RANGES</b>	Virtually unlimited See page 77 for standard ranges available.	
<b>OUTPUT RATING</b>	Solid-state, SPST-N.O. 1 amp resistive; 1 amp 25VA @ 24VAC 1 amp 125VA @ 120VAC .5 amp 125VA @ 240 VAC	
<b>TIMING TOLERANCES</b>	Minimum Setting	+0 – 20%
	Maximum Setting	±10%.
<b>REPEATABILITY</b>	1% maximum; no first cycle effect	
<b>RESET TIMES</b>	Before Time Out	100 mSEC
	After Time Out	50 mSEC
<b>RECYCLE TIME</b>	40 mSEC	
<b>SUPPLY VOLTAGE</b>	24, 120 or 240 VAC, 50/60 Hz; ±10%	
<b>FALSE TRANSFER</b>	No	
<b>REVERSE POLARITY</b>	Yes	
<b>ENCLOSURE</b>	Surface mounted; totally encapsulated with a high quality epoxy for environmental protection.	
<b>TEMPERATURE RATING</b>	Operate	32° to 131°F (0° to +55°C)
	Storage	-49° to 185°F (-45° to +85°C)
<b>TERMINATIONS</b>	1/4" quick disconnect terminals	
<b>WEIGHT</b>	NET: 1.28 oz Shipping: 1.6 oz.	

### OPERATION

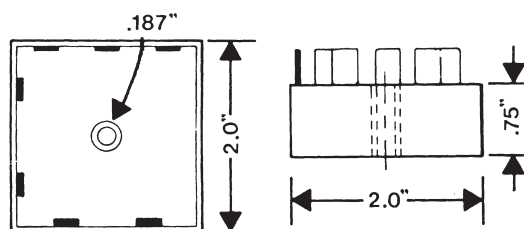
When voltage is applied to the input, the internal relay picks up and the time delay begins regardless of the position of the control switch. With the switch in the open position, when voltage is applied, the timer will complete its time delay period and the internal relay will drop out if the switch is not closed before the completion of the time delay period. With the switch in the closed position, when voltage is applied, the timer will complete its time delay period and the internal relay will drop out if the switch is not opened and reclosed before the completion of the time delay period. After voltage has been applied, closing of the control switch initiates the time delay period. Reset is accomplished by interrupting the supply voltage or re-closing the control switch.



### WIRING



### DIMENSIONS (INCHES)



### MODEL NUMBER

<b>MODEL NUMBER</b>	TSM		A		C	
<b>SUPPLY VOLTAGE</b>						
24 VAC		24				
120 VAC		120				
240 VAC		240				
<b>TYPE OF OPERATION</b>						
Fixed				F		
External Resistor Adjustable; See page 82 for resistor selection.				R		
<b>DELAY PERIOD</b>						
See page 82 for standard ranges available						

Example: TSM-120-ARC-060—Energy conservation timer, 120 VAC, external resistor adjustable from 0.6 to 60 seconds, UL recognized.

# Mouser Electronics

Authorized Distributor

Click to View Pricing, Inventory, Delivery & Lifecycle Information:

[ATC Diversified Electronics:](#)

[TSM](#)