



cRU® US
E55826

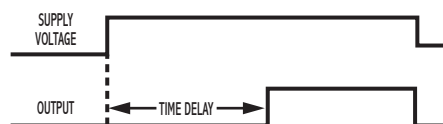
ON-Delay Solid State Output

SPECIFICATIONS

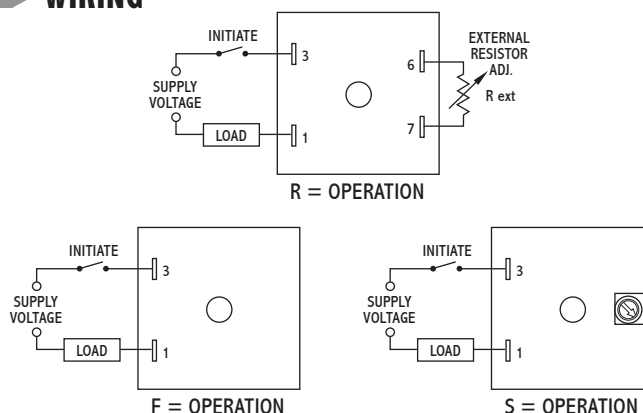
TIMING RANGES	Virtually unlimited. See page 77 for standard ranges available.	
OUTPUT RATING	Solid-state, SPST-N.O. 1 amp resistive; 1 amp 25VA @ 24VAC 1 amp 125VA @ 120VAC .5 amp 125VA @ 240 VAC	
TIMING TOLERANCES	Minimum Setting	+0 – 20%
	Maximum Setting	±10%
REPEATABILITY	1% maximum; no first cycle effect	
RESET TIMES	Before Time Out	100 mSEC
	After Time Out	50 mSEC
RECYCLE TIME	40 mSEC	
SUPPLY VOLTAGE	12 to 240 VDC, 24 to 240 VAC ±10%, 50/60 Hz	
FALSE TRANSFER	No	
ENCLOSURE	Surface mounted; totally encapsulated with a high quality epoxy for environmental protection.	
TEMPERATURE RATING	Operate	32° to 131°F (0° to +55°C)
	Storage	-49° to 185°F (-45° to +85°C)
TERMINATIONS	1/4" quick disconnect terminals	
WEIGHT	NET: 1.28 oz Shipping: 1.6 oz.	

OPERATION

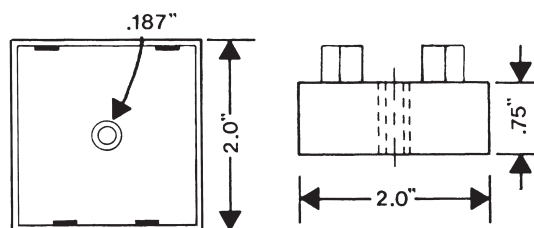
The time delay begins when power is applied to the timer. Upon completion of the delay period, the load energizes. Reset during or after the delay period is accomplished by removal of the input voltage. The TSC will not false transfer if voltage is removed prior to completion of the delay period. A fast recycle time permits accurate, high speed, continuous operation.



WIRING



DIMENSIONS (INCHES)



MODEL NUMBER

MODEL NUMBER	TSC	100	A		C	
TYPE OF OPERATION						
Fixed (Factory Preset)						
External Resistor Adjustable; See page 82 for resistor selection.						
Screwdriver Adjustable						
DELAY PERIOD						
See page 82 for standard ranges available						

Example: TSC-100-ARC-100—Delay on operate, external resistor adjustable from 1 to 100 seconds, UL recognized.

Mouser Electronics

Authorized Distributor

Click to View Pricing, Inventory, Delivery & Lifecycle Information:

[ATC Diversified Electronics:](#)

[TSC](#)