

## OPERATION

The **ISO Series single channel** devices are used to provide a safe and reliable means of controlling loads from hazardous locations without releasing sufficient energy, under normal or abnormal conditions, to cause ignition of a flammable or combustible atmospheric mixture while in its most easily ignited concentration. An isolated output turns on when the control switch input from the hazardous location is closed. When the control switch input opens, the isolated output turns off. The **Style A single channel plug-in devices** come equipped with integral spring mating clips and socket (PF083A) which secure the device to make this unit the only UL913 Intrinsically Safe plug-in associated apparatus available on the market today. The **Style N**, surface mounted enclosure is sealed with a high quality epoxy resin material and has five (5) #8-32 screw terminals.

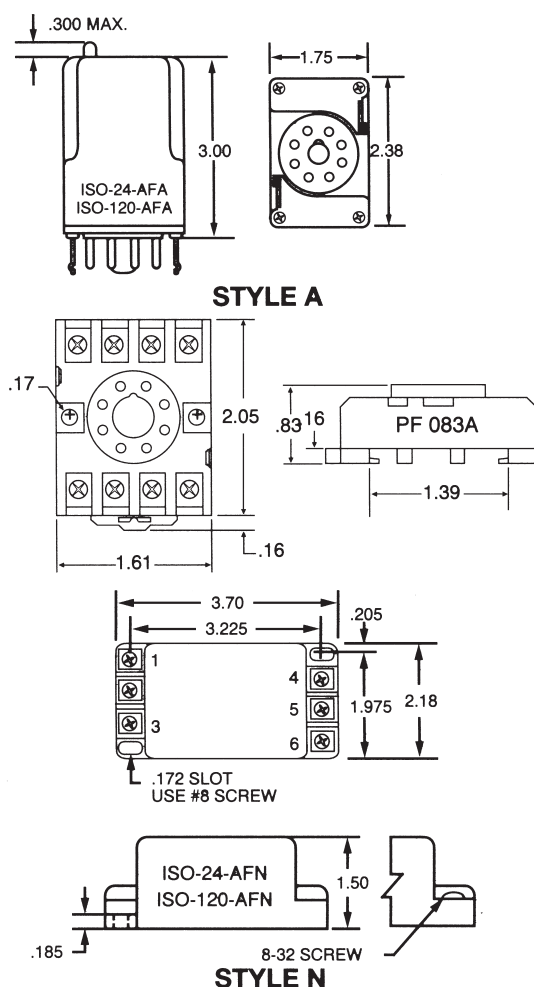


Process Control Equipment  
for Hazardous Locations  
**7M26**  
**UL913**



*Single Channel Isolated Switch*

## DIMENSIONS (INCHES)



## SPECIFICATIONS

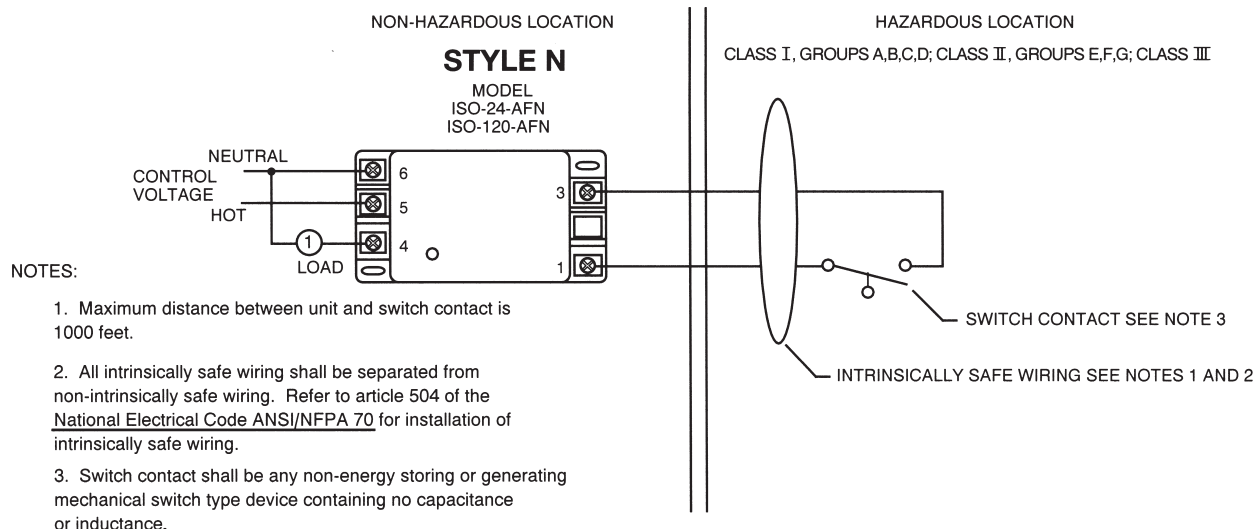
<b>CONTROL VOLTAGE</b>	24 or 120 VAC $\pm 10\%$ , 50/60 Hz	
<b>CONTROL SWITCH</b>	Open Circuit Voltage	16 VDC
	Short Circuit Current	200 $\mu$ Amps
<b>RESPONSE</b>	Operate	6 mSEC (Approx.)
	Release	2.5 mSEC (Approx.)
<b>POWER REQUIRED</b>	1.5 VA	
<b>DUTY CYCLE</b>	Continuous	
<b>CONTACT RATING</b>	SPST-N.O., 5 amps @ 24 or 120 VAC, Resistive; 278 VA, Inductive	
<b>SENSITIVITY</b>	100 k ohm	
<b>ISOLATION</b>	2500 Volts, Input to Output	
<b>LIFE EXPECTANCY</b>	Mechanical	20 Million Operations
	Electrical	50,000 Operations @ Rated Load
<b>INDICATORS</b>	On When Output is On	
<b>TEMPERATURE RATING</b>	Operate	-4° to 131°F (-20° to +55°C)
	Storage	-40° to 185°F (-40° to +85°C)
<b>ENCLOSURE</b>	Style "A" and "N"	
<b>TERMINATIONS</b>	(12) #8-32 Screw terminals	
<b>WEIGHT</b>	20 oz.	

## ORDERING INFORMATION

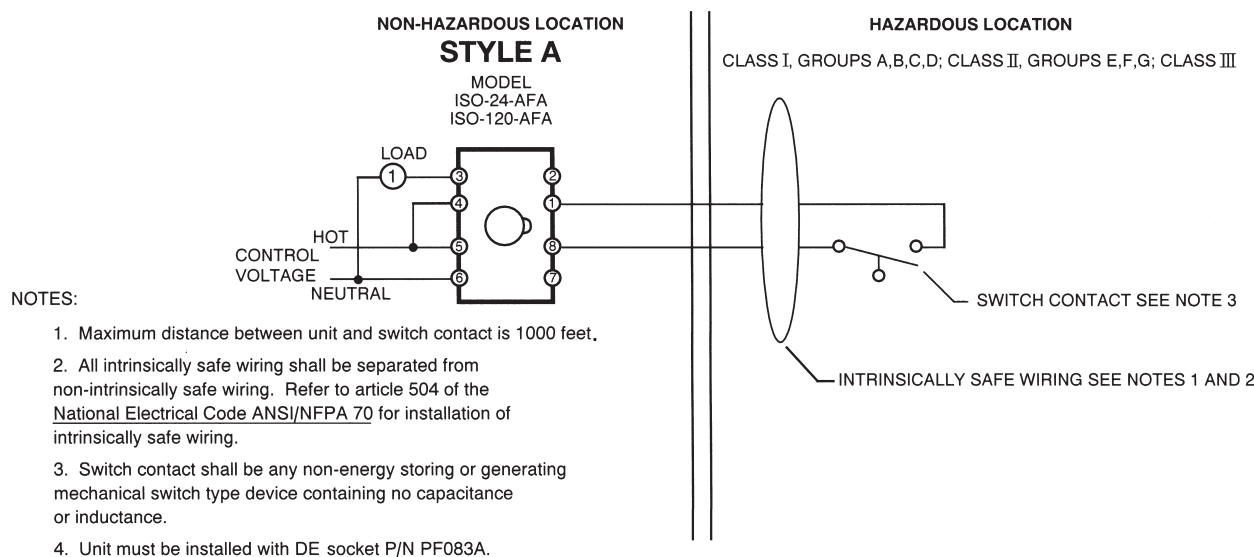
MODEL NUMBER	CONTROL VOLTAGE	ENCLOSURE STYLE
ISO-24-AFA	24 VAC	A
ISO-120-AFA	120 VAC	A
ISO-24-AFN	24 VAC	N
ISO-120-AFN	120 VAC	N

Style "A" Socket Included (PF083A) with clips

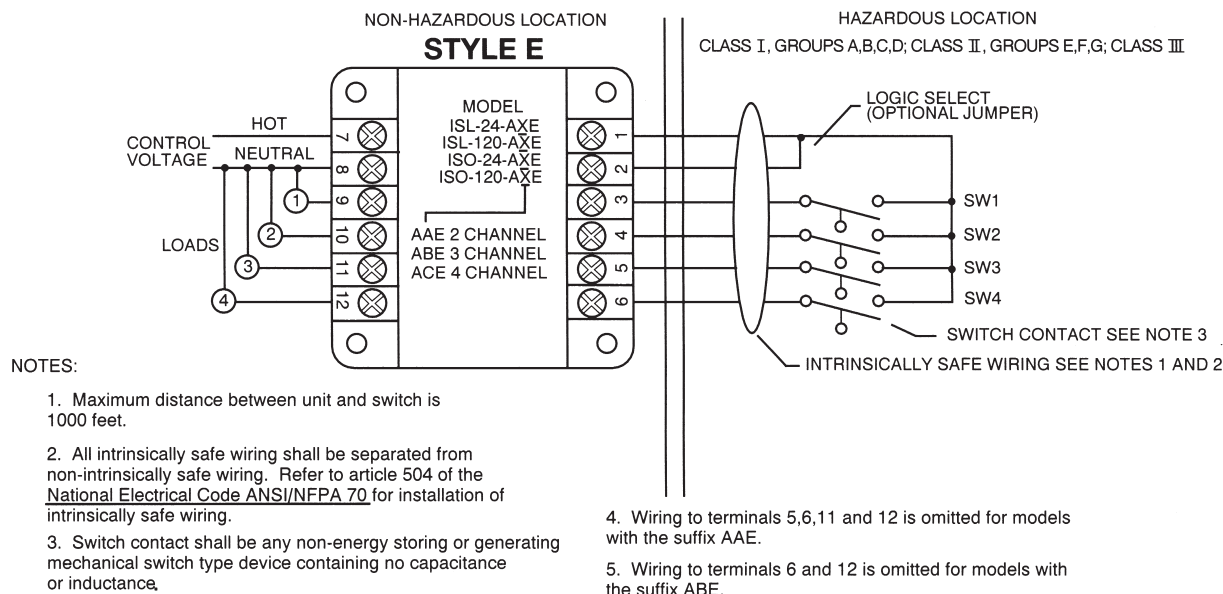
CONTROL DRAWING 191



CONTROL DRAWING 192



CONTROL DRAWING 193



# Mouser Electronics

Authorized Distributor

Click to View Pricing, Inventory, Delivery & Lifecycle Information:

[ATC Diversified Electronics:](#)

[ISO-120-AFA](#) [ISO-120-AFN](#)