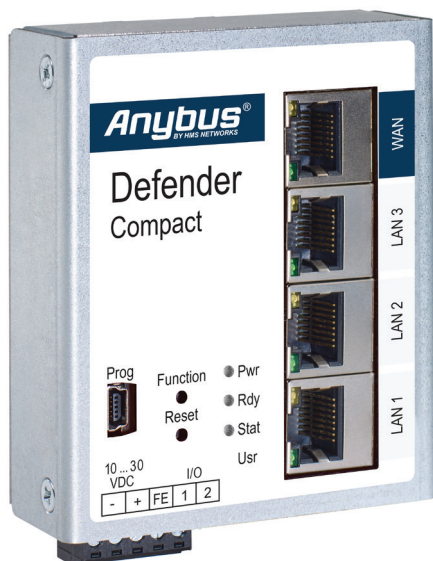


Defender Compact



Industrial Firewall

The Anybus Defender Compact is an industrial firewall that offers protection against attacks by segmenting the production network into manageable and logically separated sections.

Both bridge and Network Address Translation (NAT) mode are supported providing key use cases:

- Avoid address conflicts & isolate internal network
- Securing old equipment
- Isolate machines or groups of machines according to IEC62443 Zones and Conduits model

Router and firewall

1x WAN and 3x LAN port switch, configurable in transparent bridge mode or NAT/Routing mode with static routes. IP, port and protocol filters for monitoring and restricting data traffic. Versatile NAT functionalities, eg 1: 1 NAT, SimpleNAT and port forwarding.



Graphical User Interface [GUI]

The mbNETFIX Manager Windows software assists the automation user in creating a project and setting up the device. It is designed to resemble the user interface of a PLC programming software.



Security by design

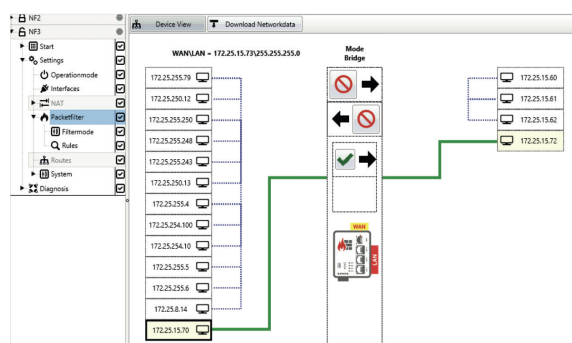
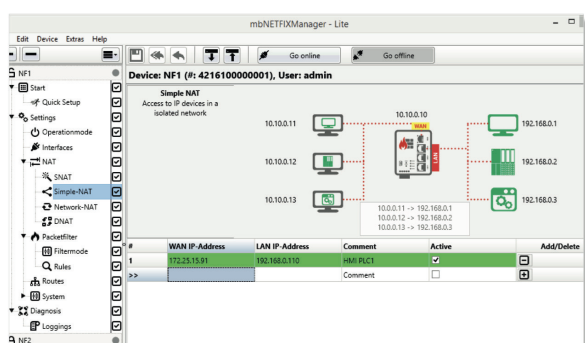
Security implemented right from the beginning of the design process. Including:

- Secure Boot
- No embedded website
- Projects are encrypted and uniquely paired by means of an RSA key
- 3+2 User Access Levels



Learning mode

Capability to initially implement in listen mode, you can see the traffic in the graphical user interface (GUI), as spotted by the firewall. You can then select in the configuration application select which connections are to be closed and which should be preserved.



Product selection

Article nr:

Description:

ABD1004-NATFW

Industrial Compact Firewall - DIN Rail - 4x100Mbit RJ45 - NAT/FW

Defender Compact

General

Dimensions with connectors	(L x W x H) 38,5 x 69 x 92,6 mm / 1,51 x 2,72 x 3,65 in
Weight	235 gr, 8.29 oz
IP rating	IP30 rating (when all ports are populated)
Housing material	Metal enclosure
Mounting	DIN rail according to EN50022- 35 x 7.5 and 35 x 15
Operating temperature	-40 to 75° C, -40 to 167° F
Humidity	Non-Condensing 0%- 95%
Configuration	Via USB 2.0 Mini port with management software (Windows) or CLI via SSH
Certification/Conformity	CE, UL (E482663)

Power

Input voltage	10-30V DC (low 0-3,2V DC, high 8-30V DC)
Current consumption	Max 250 mA @ 24 V

Network interfaces

WAN	One (1) 10/100 BASE-T(X) RJ45 port
LAN	Three (3) 10/100 BASE-T(X) RJ45 ports

Security specifications

Operating Modes	Bridge / Gateway mode
Routing Gateway Mode	Between WAN and LAN with static routing table
NAT Gateway Mode	Forwarding (DNAT), SimpleNAT, NetworkNAT, SNAT
Network Filter	IP/port/protocol filter, MAC filter, WAN>LAN and LAN>WAN, Black/White listing
Network Learning Function	Taking over of network traffic as filter rules, output of network list
Access Control	Four different access levels
Services	NTP Client, Syslog client



PROG. CNTLR.
E482663

Mouser Electronics

Authorized Distributor

Click to View Pricing, Inventory, Delivery & Lifecycle Information:

[HMS Networks:](#)

[ABD1004-NATFW](#)