

SPECIFICATIONS

ELECTRICAL

RESISTANCE RANGE ----- 10 TO 20K OHMS
RESISTANCE TOLERANCE ----- ±5%
LINEARITY(INDEPENDENT) ----- ± 0.5%
ELECTRICAL ANGLE ----- 320° ±5°
END RESISTANCE ----- 1 OHM OR 0.2%
ELECTRICAL NOISE(ENR) ----- 100 OHMS MAX.
RESOLUTION ----- SEE CHART
INSULATION RESISTANCE ----- 1000 MEGOHMS AT 1000 VDC
DIELECTRIC STRENGTH ----- 1000 VAC MIN.
POWER RATING ----- 0.5 WATTS

MECHANICAL

NO OF TURNS ----- 1
MECHANICAL ANGLE ----- 320 ±5°
ROTATIONAL LIFE ----- 500,000 TURNS
STOP STRENGTH ----- 125 OZ IN.
STARTING TORQUE ----- .70 OZ IN.
WEIGHT ----- 1.1 OZ.
SHAFT RADIAL PLAY ----- .003 T.I.R.
SHAFT END PLAY ----- .005 T.I.R.

ENVIRONMENTAL

OPERATING TEMPERATURE ----- -55°C TO +105°C
TEMPERATURE COEFFICIENT ----- SEE CHART
VIBRATION ----- 10HZ TO 2000HZ 15G
SHOCK ----- 50G 11MS
MOISTURE RESISTANCE ----- 40°C 95%RH 240 HOURS

MATERIALS

HOUSING ----- METAL
SHAFT ----- STAINLESS STEEL
BUSHING ----- PLATED BRASS
TERMINALS ----- GOLD PLATED
RESISTANCE ELEMENT ----- WIREWOUND

OPTIONAL FEATURES

SHAFT MODIFICATIONS
REAR SHAFT
SPECIAL ANGLES
CENTER TAP

NOTES:

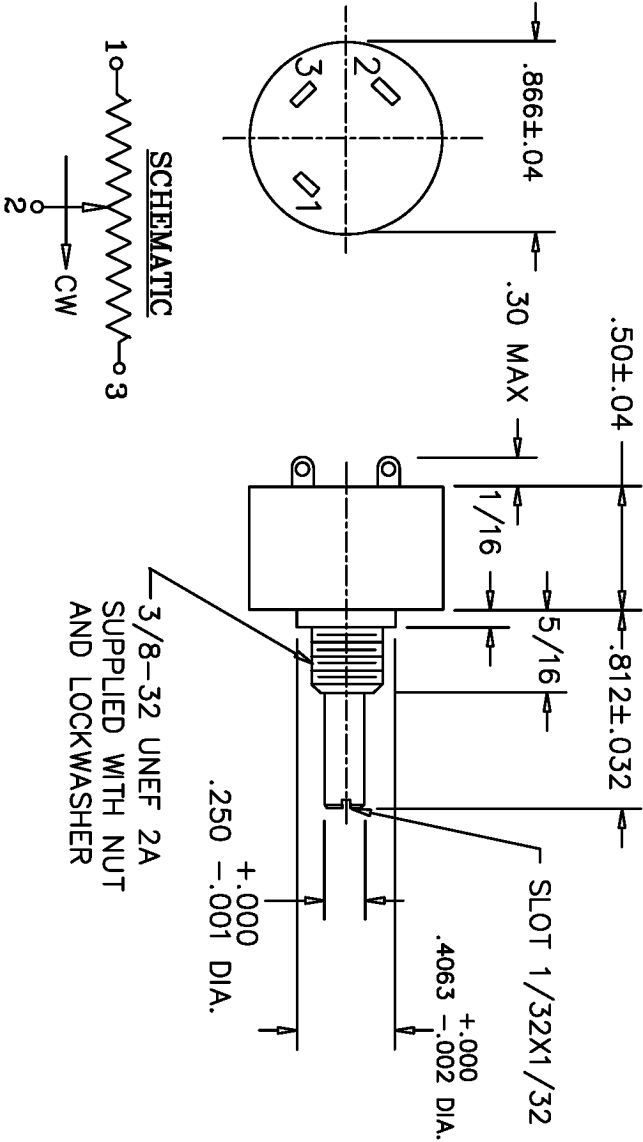
WIREWOUND RESISTANCE
ELEMENT

TOLERANCES

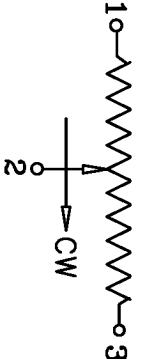
XX = .010 FRACTIONS = ?/64
XXX = ±.005 ANGLES = ±1/2°

ALL SPECIFICATIONS SUBJECT TO CHANGE WITHOUT NOTICE.

REV.	BY	DATE	PART NO.
B	BT	10-17	SW22D
C	GC	1-9-01	REVISED
D	BT	5-4-01	RESIST. TOL CHANGE
			REVISION 'C' CANCELLED



SCHEMATIC

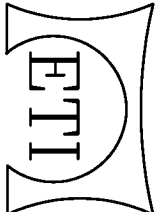


RESISTANCE	10	20	50	100	200	500	1K	2K	5K	10K	20K
RESOLUTION	.333	.270	.333	.270	.213	.222	.175	.135	.100	.079	.060
TEMPERATURE COEFFICIENT PPM/°C	700	700	80	80	80	20	20	20	20	20	20

THIS DOCUMENT CONTAINS PROPRIETARY DATA OF POLARIS INDUSTRIAL ENTERPRISES, INC. NO DISCLOSURE, REPRODUCTION, OR USE OF ANY PART THERE OF MAY BE MADE EXCEPT BY WRITTEN PERMISSION.

TITLE

SINGLE TURN
POTENTIOMETER



CARLSBAD
CALIFORNIA

PART NO.

SW22D

Mouser Electronics

Authorized Distributor

Click to View Pricing, Inventory, Delivery & Lifecycle Information:

[ETI Systems:](#)

[SW22D-50K](#) [SW22D-5K](#) [SW22D-FL-10K](#)