

THIS DOCUMENT CONTAINS PROPRIETARY DATA OF POLARS INDUSTRIAL ENTERPRISES, INC. NO DISCLOSURE, REPRODUCTION, OR USE OF ANY PART THERE OF MAY BE MADE EXCEPT BY WRITTEN PERMISSION.

REV.	BY	DATE	APPRVL.	P/N	FC200A-10

ELECTRICAL

RESISTANCE = 10K \pm 20%
 LINEARITY = \pm 3%
 ELECTRICAL ANGLE = APPROX. 70°
 OUTPUT SMOOTHNESS = BELOW 0.2% OF INPUT
 CONTACT RESISTANCE VARIATION = < 5% CRV
 RESOLUTION = ESSENTIALLY INFINITE
 DIELECTRIC STRENGTH = 500VAC, 1 MIN.
 INSULATION RESISTANCE = 1000 MEGOHM MIN
 AT 500 VDC
 WIPER CURRENT = 1mA MAX

MECHANICAL

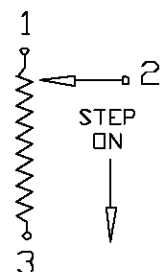
OPERATING ANGLE = APPROX. 17°
 OPERATING FORCE = 1000gf~2200gf
 AUTOMATIC SPRING RETURN
 OPERATING TEMPERATURE = -20°~+65°C
 WEIGHT = APPROX. 1.2KG
 LIFE EXPECTANCY ~ 2,000,000 OPERATIONS

ENVIRONMENTAL

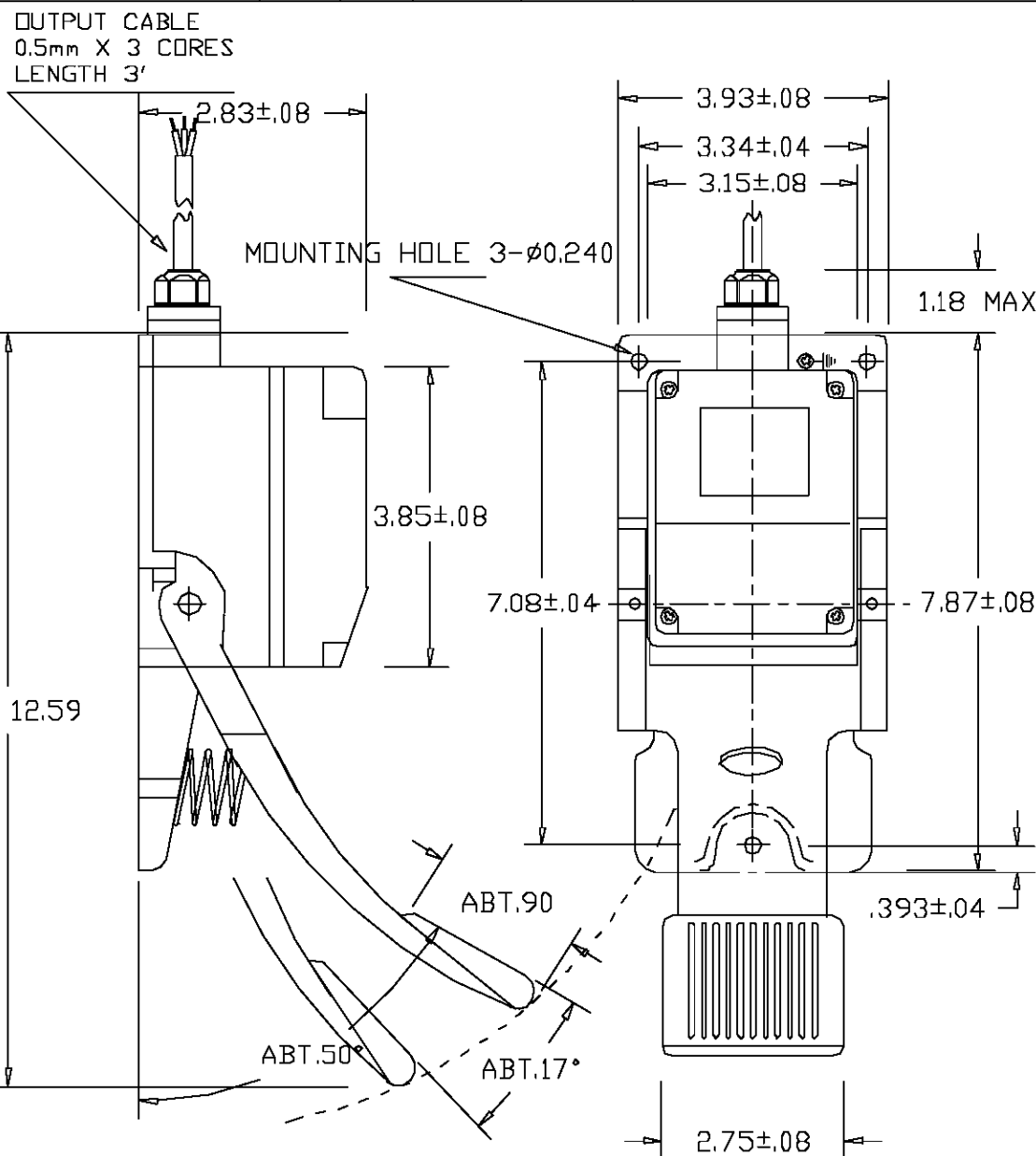
VIBRATION = 10~55HZ 10G
 SHOCK = 30G
 IP RATING = 54

OPTIONS

1 mA, 24V CODE SWITCH
 5A, 125V MICRO SWITCH
 DUAL GANGED POTENTIOMETER.
 SPECIAL RESISTANCE VALUE.
 INTERMEDIATE TAP ON POTENTIOMETER (CURRENT 8°)
 IP65 RATING.



MAX. 12.59



ETI
 SYSTEMS
 CARLSBAD
 CALIFORNIA

2251 LAS PALMAS DRIVE
 CARLSBAD, CA 92009
 PHONE: (760) 929-0749
 FAX : (760) 929-0748
 WWW.ETISYSTEMS.COM

TITLE

FOOT
 PEDAL

PART NO.

FC200A-10

Mouser Electronics

Authorized Distributor

Click to View Pricing, Inventory, Delivery & Lifecycle Information:

[ETI Systems:](#)

[FC200A-10](#)