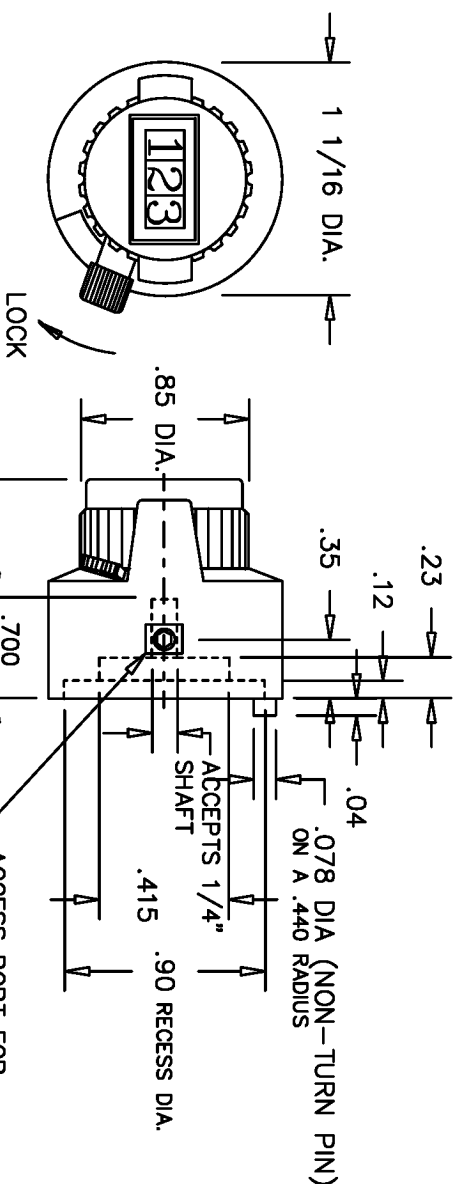


| | | | | | |
|------|-----|---------|---------|-------|-------------|
| REV. | BY | DATE | APPRVL. | P/N | DC27 |
| C | DMS | 3/23/98 | BT | ADDED | SHAFT CHART |

| | |
|-----------------------------|----------------------------|
| ACCURACY | ±0.35% OF VOLTAGE RATIO |
| REPEATABILITY | ±0.02%OR RESOLUTION OF POT |
| OPERATING TEMPERATURE RANGE | -30°C TO 85°C |
| TURNS | 10 (OOO TO 999 COUNTS) |
| LOCK | OVER THE CENTER |
| HOUSING MATERIAL | HIGH TEMP. BLACK PLASTIC |



NOTES

1. COMPATIBLE ETI SYSTEMS POTENTIOMETERS 3 TO 30 TURNS.

| | | |
|-------|-------|-------|
| MW20B | MW46B | MH20B |
| MW22B | MR46B | MH46B |

2. POT/DIAL COMBINATIONS AVAILABLE
SEE ETI SPECIFICATION DC22.

3. OTHER SHAFT SIZE BUSHINGS AVAILABLE


4. NUMBERS INCREASE WITH CLOCKWISE ROTATION

PATABLE ETI SYSTEMS POTENTIOMETERS 3 TO 30 TURNS.

**2.POT/DIAL COMBINATIONS AVAILABLE
SEE ETI SPECIFICATION DC22.**

3. OTHER SHAFT SIZE BUSHINGS AVAILABLE

4. NUMBERS INCREASE WITH CLOCKWISE ROTATION

| | | | | | | | |
|---|--|--------------------------------|--|--|--|------------------------------------|--|
| <p>TOLERANCES</p> <p>XX = +/- .010" FRAC. = +/- 1/64"</p> <p>XXX = +/- .005" ANGLES = +/- 1/2°</p> <p>ALL SPECIFICATIONS SUBJECT TO CHANGE WITHOUT NOTICE.</p> | | <p>SCALE</p> <p>N/A</p> | | <p>DATE: 3/18/98</p> <p>BY: DMS</p> <p>APPR'D: BT</p> | | <p>CODE IDENT: 19477</p> | |
|  <p>ETI SYSTEMS CARLSBAD CALIFORNIA</p> | | | | <p>TITLE</p> <p>TURN'S COUNTING DIAL</p> | | <p>PART NO.</p> <p>DC27</p> | |

Mouser Electronics

Authorized Distributor

Click to View Pricing, Inventory, Delivery & Lifecycle Information:

[ETI Systems:](#)

[DC27L-1/4](#)