

SPECIFICATIONS

ELECTRICAL

THIS DOCUMENT CONTAINS PROPRIETARY DATA OF ETI INDUSTRIAL ENTERPRISES, INC. NO DISCLOSURE, REPRODUCTION OR USE OF ANY PART THERE OF MAY BE MADE EXCEPT BY WRITTEN PERMISSION.

RESISTANCE TOLERANCE	10K OHMS
LINEARITY (INDEPENDENT)	±20%
POWER RATING	0.1 WATT (0.04 FOR "Z" AXIS)
LEVER ELECTRICAL ANGLE	20° (60° FOR "Z" AXIS)
RESOLUTION	ESSENTIALLY INFINITE
OUTPUT SMOOTHNESS	BELOW 0.2% AGAINST INPUT VOLTAGE
CONTACT RESISTANCE VARIATION	BELOW 6% C.R.V.
INSULATION RESISTANCE	1000 MEGA OHMS @ 500VDC
DIELECTRIC STRENGTH	1 MINUTE AT 500 VAC
MAX. WIPER OUTPUT	19mA RECOMMENDED, 1mA MAX.

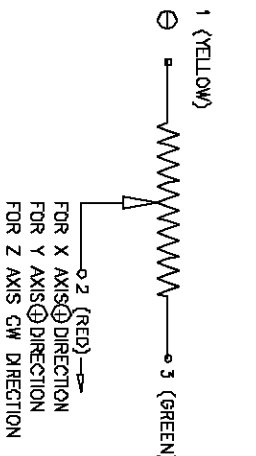
MECHANICAL

RANGE OF OPERATING LEVER	"X" & "Y": ±10° ~ ±15° FROM CENTER
OPERATING FORCE	"Z" AXIS: ±30° ~ ±35° FROM KNOB CENTER
OPERATING TEMPERATURE	"X" & "Y": APPROX. 3.6 ~ 7.14 OZ.-F.
LIFE EXPECTANCY	"Z" AXIS: APPROX. 4.23 ~ 9.87 OZ.-IN.
WEIGHT	-20°C TO +60°C
SHOCK	2 MILLION OPERATIONS APPROX. 21 OZ.
	APPROX. 1.0 OZ.

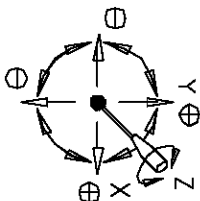
MATERIALS

HOUSING	ALUMINUM AND HIGH TEMP. THERMO PLASTIC
ELEMENT	CONDUCTIVE PLASTIC
KNOB	HARD PLASTIC

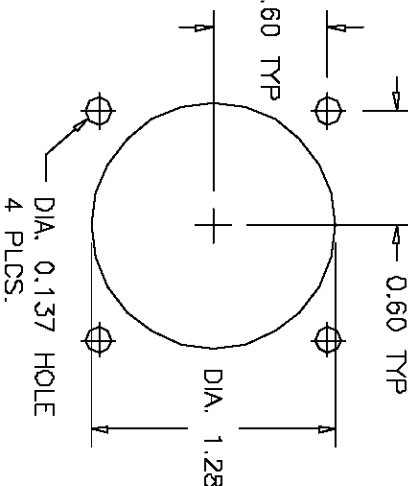
SCHEMATIC



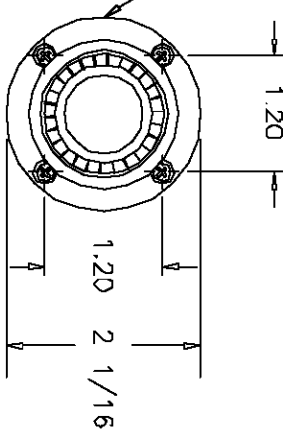
"N" LEVER DIRECTION



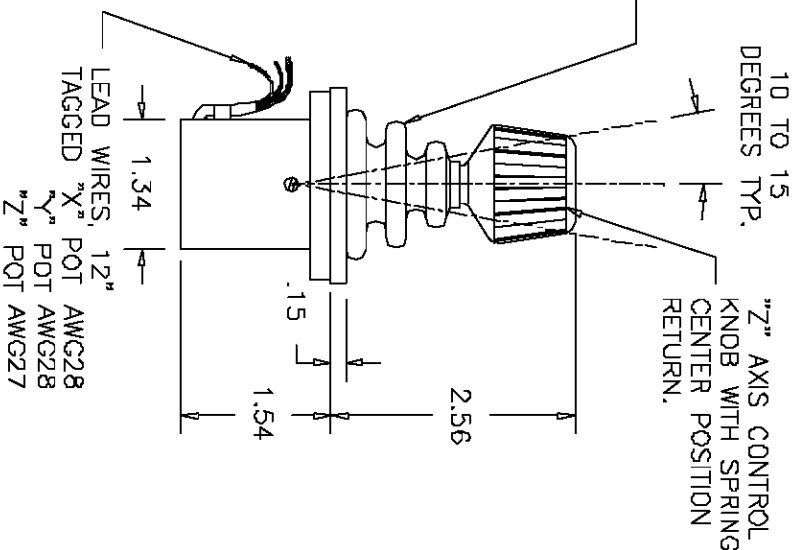
PANEL ARRANGEMENT



BLACK PLASTIC DRESS PANEL WITH MOUNTING SCREWS.



DUST PROOF RUBBER BOOT.



TITLE

JOYSTICK

PART NO.

J30-NM30-SB

P/N J30-NM30-SB



ETI SYSTEMS
CARLSBAD
CALIFORNIA

2251 LAS PALMAS DR.
CARLSBAD, CA 92009
PHONE (760) 929-0749
FAX (760) 929-0748
WWW.ETISYSTEMS.COM

Mouser Electronics

Authorized Distributor

Click to View Pricing, Inventory, Delivery & Lifecycle Information:

[ETI Systems:](#)

[J30-4079](#)