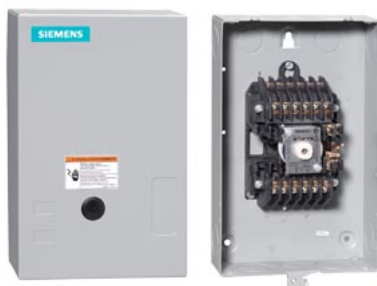
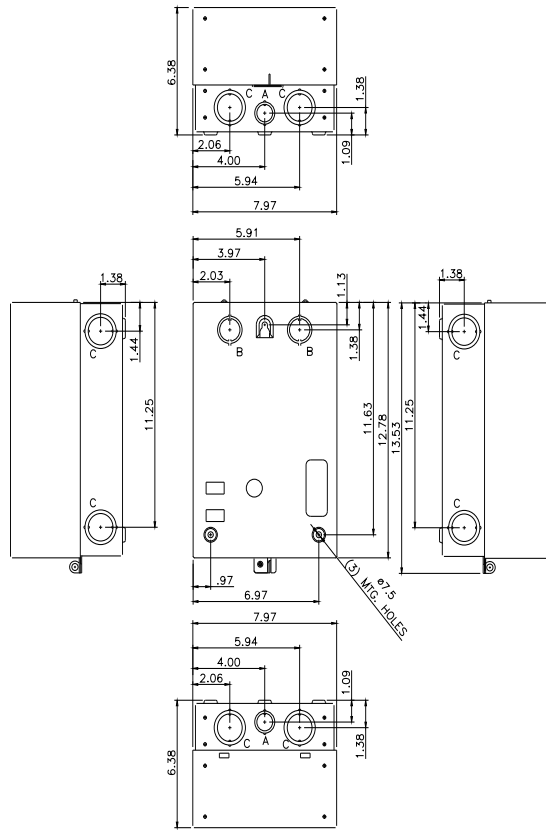


Mechanically held lighting contactor, Contactor amp rating 20A, 0 N.C. / 10 N.O. poles, Non-combination type, Enclosure NEMA type 1, Indoor general purpose use

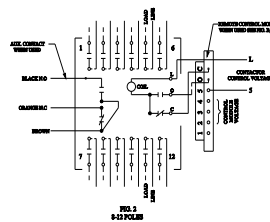
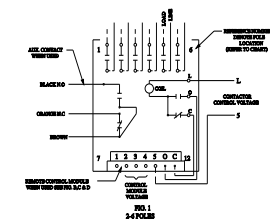


product brand name	Class CLM
design of the product	Mechanically held lighting contactor
special product feature	Energy efficient; Quiet operation
<b>General technical data</b>	
weight [lb]	9 lb
Height x Width x Depth [in]	14 × 8 × 7 in
touch protection against electrical shock	NA for enclosed products
installation altitude [ft] at height above sea level maximum	6560 ft
country of origin	USA
<b>Contactor</b>	
size of contactor	20 Amp
number of NO contacts for main contacts	10
number of NC contacts for main contacts	0
operating voltage for main current circuit at AC at 60 Hz maximum	600 V
contact rating of the main contacts of lighting contactor	
• at tungsten (1 pole per 1 phase) rated value	20A @250V 1p 1ph
• at tungsten (2 poles per 1 phase) rated value	20A @250V 2p 1ph
• at tungsten (3 poles per 3 phases) rated value	20A @250V 3p 3ph
• at ballast (1 pole per 1 phase) rated value	20A @347V 1p 1ph
• at ballast (2 poles per 1 phase) rated value	20A @600V 2p 1ph
• at ballast (3 poles per 3 phases) rated value	20A @600V 3p 3ph
• at resistive load (1 pole per 1 phase) rated value	30A @347V 1p 1ph
• at resistive load (2 poles per 1 phase) rated value	30A @600V 2p 1ph
• at resistive load (3 poles per 3 phases) rated value	30A @600V 3p 3ph
<b>Auxiliary contact</b>	
number of NC contacts for auxiliary contacts	0
number of NO contacts for auxiliary contacts	0
number of total auxiliary contacts maximum	4
contact rating of auxiliary contacts of contactor according to UL	NA
<b>Coil</b>	
type of voltage of the control supply voltage	AC
control supply voltage	
• at AC at 50 Hz rated value	110 ... 120 V
• at AC at 60 Hz rated value	110 ... 120 V
apparent pick-up power of magnet coil at AC	600 VA
apparent holding power of magnet coil at AC	6 VA
operating range factor control supply voltage rated value of magnet coil	0.85 ... 1.1
<b>Enclosure</b>	
degree of protection NEMA rating of the enclosure	NEMA 1 enclosure

design of the housing	indoors, usable on a general basis
<b>Mounting/wiring</b>	
mounting position	Vertical
fastening method	Surface mounting and installation
type of electrical connection for supply voltage line-side	Screw-type terminals
tightening torque [lbf·in] for supply	18 ... 18 lbf·in
type of connectable conductor cross-sections at line-side for AWG cables single or multi-stranded	2x (18 ... 10 AWG)
temperature of the conductor for supply maximum permissible	75 °C
material of the conductor for supply	CU
type of electrical connection for load-side outgoing feeder	Screw-type terminals
tightening torque [lbf·in] for load-side outgoing feeder	18 ... 18 lbf·in
type of connectable conductor cross-sections for AWG cables for load-side outgoing feeder single or multi-stranded	2x (18 ... 10 AWG)
temperature of the conductor for load-side outgoing feeder maximum permissible	75 °C
material of the conductor for load-side outgoing feeder	CU
type of electrical connection of magnet coil	Screw-type terminals
tightening torque [lbf·in] at magnet coil	18 ... 18 lbf·in
type of connectable conductor cross-sections of magnet coil for AWG cables single or multi-stranded	2x (18 ... 10 AWG)
temperature of the conductor at magnet coil maximum permissible	75 °C
material of the conductor at magnet coil	CU
<b>Short-circuit current rating</b>	
design of the fuse link for short-circuit protection of the main circuit required	none
design of the short-circuit trip	Thermal magnetic circuit breaker
maximum short-circuit current breaking capacity (Icu) <ul style="list-style-type: none"> <li>• at 240 V</li> <li>• at 480 V</li> <li>• at 600 V</li> </ul>	5 kA 5 kA 5 kA
certificate of suitability	NEMA ICS 2; UL 508; CSA 22.2, No. 14
<b>Further information</b>	
<b>Industrial Controls - Product Overview (Catalogs, Brochures,...)</b> <a href="http://www.usa.siemens.com/iccatalog">www.usa.siemens.com/iccatalog</a> <b>Industry Mall (Online ordering system)</b> <a href="https://mall.industry.siemens.com/mall/en/us/Catalog/product?mlfb=US2:CLM1B10120">https://mall.industry.siemens.com/mall/en/us/Catalog/product?mlfb=US2:CLM1B10120</a> <b>Service&amp;Support (Manuals, Certificates, Characteristics, FAQs,...)</b> <a href="https://support.industry.siemens.com/cs/US/en/ps/US2:CLM1B10120">https://support.industry.siemens.com/cs/US/en/ps/US2:CLM1B10120</a> <b>Image database (product images, 2D dimension drawings, 3D models, device circuit diagrams, EPLAN macros, ...)</b> <a href="http://www.automation.siemens.com/bilddb/cax_de.aspx?mlfb=US2:CLM1B10120&amp;lang=en">http://www.automation.siemens.com/bilddb/cax_de.aspx?mlfb=US2:CLM1B10120&amp;lang=en</a> <b>Certificates/approvals</b> <a href="https://support.industry.siemens.com/cs/US/en/ps/US2:CLM1B10120/certificate">https://support.industry.siemens.com/cs/US/en/ps/US2:CLM1B10120/certificate</a>	



LETTER	KNOCKOUT & CONDUIT SIZE
A	ø22.2 X ø28.6 FOR 12.7 & 19 CONDUIT
B	ø28.6 X ø34.9 FOR 19 & 25.4 CONDUIT
C	ø34.9 X ø43.6 FOR 25.4 & 31.8 CONDUIT



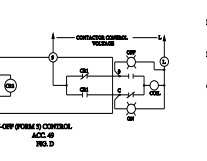
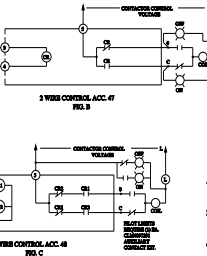
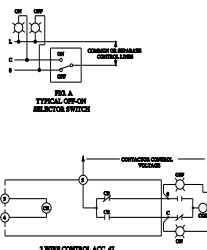
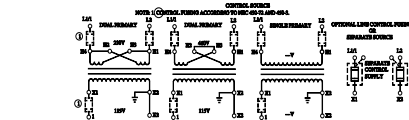
POLES	LOCATION
1	1-6
2	1-6
3	1-6
4	1-6
5	1-6
6	1-6
7	1-6
8	1-6
9	1-6
10	1-6
11	1-6
12	1-6

POLES TO LOAD	AMPERES
1 FOR 1	10
1 FOR 2	10
2 FOR 1	10
2 FOR 2	10
3 FOR 1	10
3 FOR 2	10
3 FOR 3	10
4 FOR 1	10
4 FOR 2	10
4 FOR 3	10
4 FOR 4	10
5 FOR 1	10
5 FOR 2	10
5 FOR 3	10
5 FOR 4	10
5 FOR 5	10
6 FOR 1	10
6 FOR 2	10
6 FOR 3	10
6 FOR 4	10
6 FOR 5	10
6 FOR 6	10

10 AMP. DC  
GENERAL 20V DC MAX. 1 POLE IN SERIES

SWITCH IS SUITABLE FOR USE IN A CIRCUIT  
CAPABLE OF DELIVERING NOT MORE THAN THE  
RMS SYMMETRICAL CURRENT AT THE MAXIMUM  
VOLTAGE INDICATED. WHEN FREQUENCY  
EXCEEDS 100 HZ, THE MAXIMUM CURRENT  
SHOULD BE REDUCED BY 10% PER 100 HZ  
IN EXCESS OF 100 HZ.

MAXIMUM TIME	MAXIMUM AC
ANYWHERE	VOLTS
25,000	250
15,000	400
10,000	600



MODULE	TERMINAL	CONNECT TO
1	1	NOT USED
2	2	CONTROL VOLTAGE FOR ACC. 47 & 49
3	3	CONTROL VOLTAGE FOR ACC. 47 & 49
4	4	MODULE CONTROL VOLTAGE
5	5	CONTRACTOR CONTROL VOLTAGE
6	6	TERMINAL O OR CONTRACTOR
7	7	TERMINAL C OR CONTRACTOR

\* FOR 24 VDC CONTROL MODULES  
CONNECT TERMINAL 4 TO NEGATIVE (-)

- GENERAL NOTE
- WHEN CONTACTOR & LINE VOLTAGE ARE THE SAME, THE CONTACTOR CONTROL VOLTAGE CAN BE DERIVED FROM THE LINE POLS OF THE CONTACTOR DEVICE.
  - MAIN CONTACTS ARE SHOWN IN OPEN POSITION WITH CONTROL LINE DISCONNECTED. SEE BATTERY RELAY (SWITCH SHOWN WITH CONTACTS CLOSED).
  - LINE & LOAD TERMINALS ARE REVERSIBLE.
  - CONTACTS ARE BREAKER THROW, DOUBLE BREAK, WITH MECHANICALLY INTERLOCKED TRIP COIL OPERATOR. MECHANICALLY HELD BY PULL OPEN & CLOSED POSITIONS.
  - CONTROL CONNECTIONS TO LINE & LOAD WILL ACCEPT 30, 30/30 TO 100/100 VOLT, 50/50 TORQUE LINE POLS CONNECTION TO 10 & 11.
  - CONTROL CONNECTIONS TO ELECTRONIC MODULES (ACC. 47, 48, OR 49) WILL ACCEPT NO. 22 AWG TO 12 AWG COPPER WIRE, TORQUE CONTROL TERMINALS TO 21 & 11.
  - CONTROL MODULE VOLTAGE SUPPLIED BY CUSTOMER.

24306100401

last modified:

1/25/2022



# Mouser Electronics

Authorized Distributor

Click to View Pricing, Inventory, Delivery & Lifecycle Information:

Siemens:

CLM1B10120