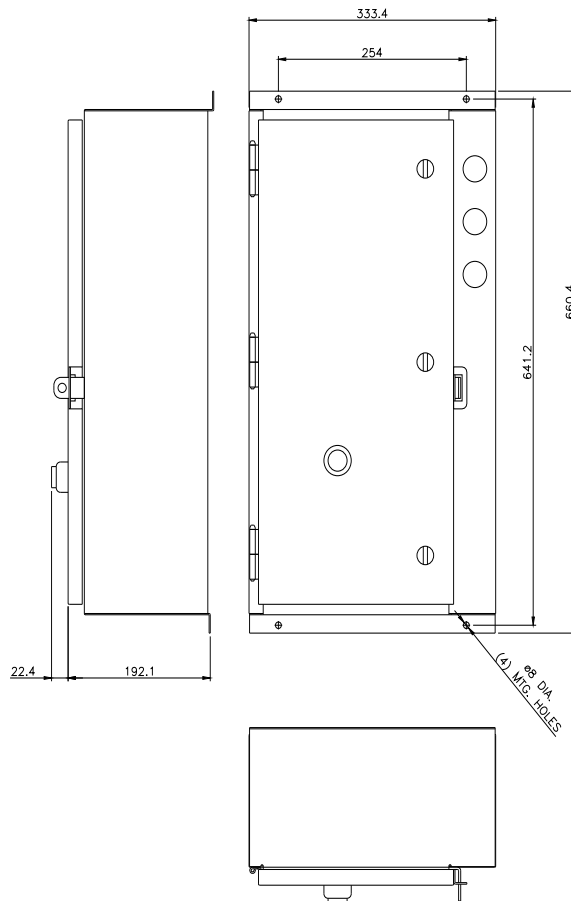




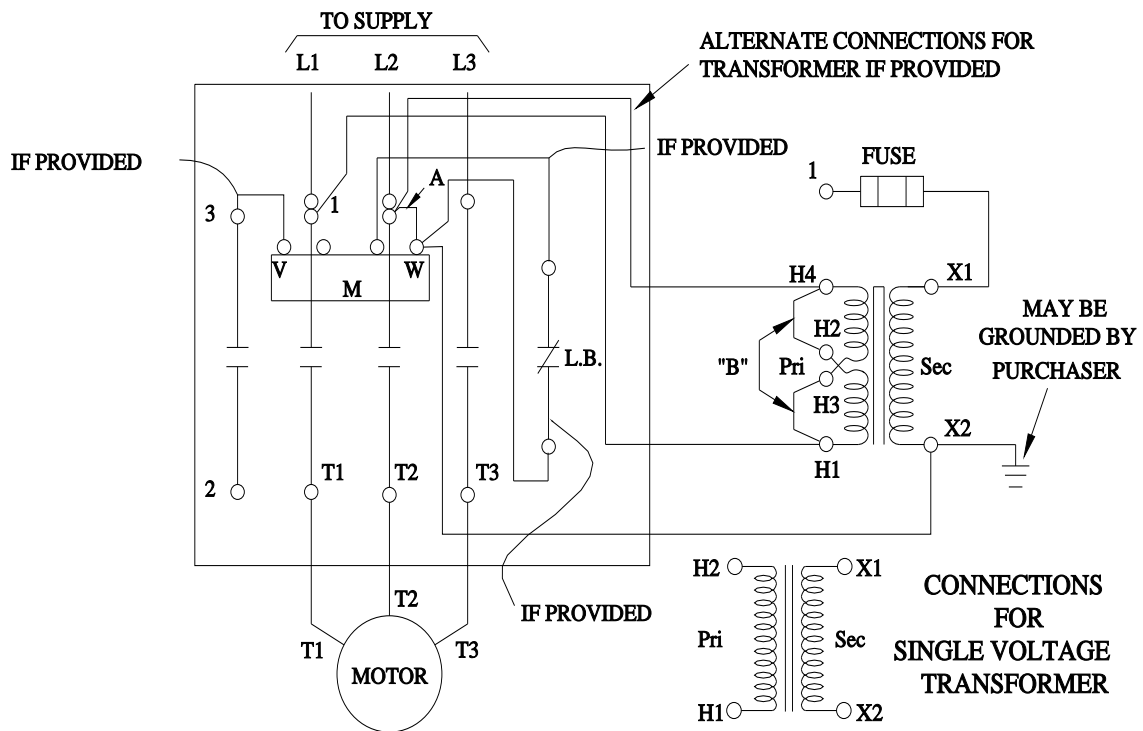
Non-reversing NEMA contactor, Size 3, Three phase full voltage, Contactor amp rating 90A, 3 wire (NO aux included), 110-120/220-240VAC 60Hz coil, Non-combination type, Encl NEMA type 4X 304 S-Steel, Water/dust tight noncorrosive, Standard width enclosure

|   |                                     |
|---|-------------------------------------|
| product brand name  | Class 40                            |
| design of the product   | Non-reversing contactor             |
| special product feature   | Dual voltage coil                   |
| <b>General technical data</b>   |                                     |
| weight [lb]   | 36 lb                               |
| Height x Width x Depth [in]   | 26 × 13 × 8 in                      |
| touch protection against electrical shock                               | NA for enclosed products            |
| installation altitude [ft] at height above sea level maximum            | 6560 ft                             |
| ambient temperature [°F]  |                                     |
| • during storage  | -22 ... +149 °F                     |
| • during operation  | -4 ... +104 °F                      |
| ambient temperature   |                                     |
| • during storage  | -30 ... +65 °C                      |
| • during operation  | -20 ... +40 °C                      |
| country of origin   | USA                                 |
| <b>Horsepower ratings</b>   |                                     |
| yielded mechanical performance [hp] for 3-phase AC motor                |                                     |
| • at 200/208 V rated value  | 25 hp                               |
| • at 220/230 V rated value  | 30 hp                               |
| • at 460/480 V rated value  | 50 hp                               |
| • at 575/600 V rated value  | 50 hp                               |
| <b>Contactor</b>  |                                     |
| size of contactor   | NEMA controller size 3              |
| number of NO contacts for main contacts                                 | 3                                   |
| operating voltage for main current circuit at AC at 60 Hz maximum       | 600 V                               |
| operational current at AC at 600 V rated value                          | 90 A                                |
| mechanical service life (operating cycles) of the main contacts typical | 5000000                             |
| <b>Auxiliary contact</b>  |                                     |
| number of NC contacts at contactor for auxiliary contacts               | 0                                   |
| number of NO contacts at contactor for auxiliary contacts               | 1                                   |
| number of total auxiliary contacts maximum                              | 7                                   |
| contact rating of auxiliary contacts of contactor according to UL       | 10A@600VAC (A600), 5A@600VDC (P600) |
| <b>Coil</b>   |                                     |
| type of voltage of the control supply voltage                           | AC                                  |
| control supply voltage  |                                     |
| • at AC at 60 Hz rated value  | 110 ... 240 V                       |
| holding power at AC minimum   | 14 W                                |
| apparent pick-up power of magnet coil at AC                             | 310 VA                              |
| apparent holding power of magnet coil at AC                             | 26 VA                               |

|   |   |
|---|---|
| operating range factor control supply voltage rated value of magnet coil  | 0.85 ... 1.1  |
| percental drop-out voltage of magnet coil related to the input voltage  | 50 %  |
| ON-delay time   | 26 ... 41 ms  |
| OFF-delay time  | 14 ... 19 ms  |
| <b>Enclosure</b>  |   |
| degree of protection NEMA rating of the enclosure   | NEMA 4x 304 stainless steel enclosure   |
| design of the housing   | dustproof, waterproof & resistant to corrosion  |
| <b>Mounting/wiring</b>  |   |
| mounting position   | Vertical  |
| fastening method  | Surface mounting and installation   |
| type of electrical connection for supply voltage line-side  | Box lug   |
| tightening torque [lbf-in] for supply   | 120 ... 120 lbf-in  |
| type of connectable conductor cross-sections at line-side for AWG cables single or multi-stranded   | 1x (14 ... 2/0 AWG)   |
| temperature of the conductor for supply maximum permissible   | 75 °C   |
| material of the conductor for supply  | AL or CU  |
| type of electrical connection for load-side outgoing feeder   | Box lug   |
| tightening torque [lbf-in] for load-side outgoing feeder  | 120 ... 120 lbf-in  |
| type of connectable conductor cross-sections for AWG cables for load-side outgoing feeder single or multi-stranded  | 1x (14 ... 2/0 AWG)   |
| temperature of the conductor for load-side outgoing feeder maximum permissible  | 75 °C   |
| material of the conductor for load-side outgoing feeder   | AL or CU  |
| type of electrical connection of magnet coil  | Screw-type terminals  |
| tightening torque [lbf-in] at magnet coil   | 5 ... 12 lbf-in   |
| type of connectable conductor cross-sections of magnet coil for AWG cables single or multi-stranded   | 2x (16 ... 12 AWG)  |
| temperature of the conductor at magnet coil maximum permissible   | 75 °C   |
| material of the conductor at magnet coil  | CU  |
| type of electrical connection at contactor for auxiliary contacts   | Screw-type terminals  |
| tightening torque [lbf-in] at contactor for auxiliary contacts  | 10 ... 15 lbf-in  |
| type of connectable conductor cross-sections at contactor for AWG cables for auxiliary contacts single or multi-stranded  | 1x (12 AWG), 2x (16 ... 14 AWG), 2x (18 ... 16 AWG)   |
| temperature of the conductor at contactor for auxiliary contacts maximum permissible  | 75 °C   |
| material of the conductor at contactor for auxiliary contacts   | CU  |
| <b>Short-circuit current rating</b>   |   |
| design of the fuse link for short-circuit protection of the main circuit required   | 10kA@600V (Class H or K); 100kA@600V (Class R or J)   |
| design of the short-circuit trip  | Thermal magnetic circuit breaker  |
| maximum short-circuit current breaking capacity (Icu)   | <ul style="list-style-type: none"> <li>• at 240 V 14 A</li> <li>• at 480 V 10 A</li> <li>• at 600 V 10 A</li> </ul> |
| certificate of suitability  | NEMA ICS 2; UL 508; CSA 22.2, No.14   |
| <b>Further information</b>  |   |
| <b>Industrial Controls - Product Overview (Catalogs, Brochures,...)</b><br><a href="http://www.usa.siemens.com/iccatalog">www.usa.siemens.com/iccatalog</a>   |   |
| <b>Industry Mall (Online ordering system)</b><br><a href="https://mall.industry.siemens.com/mall/en/us/Catalog/product?mlfb=US2:40HP32WA">https://mall.industry.siemens.com/mall/en/us/Catalog/product?mlfb=US2:40HP32WA</a>  |   |
| <b>Service&amp;Support (Manuals, Certificates, Characteristics, FAQs,...)</b><br><a href="https://support.industry.siemens.com/cs/US/en/ps/US2:40HP32WA">https://support.industry.siemens.com/cs/US/en/ps/US2:40HP32WA</a>  |   |
| <b>Image database (product images, 2D dimension drawings, 3D models, device circuit diagrams, EPLAN macros, ...)</b><br><a href="http://www.automation.siemens.com/bilddb/cax_de.aspx?mlfb=US2:40HP32WA&amp;lang=en">http://www.automation.siemens.com/bilddb/cax_de.aspx?mlfb=US2:40HP32WA&amp;lang=en</a> |   |
| <b>Certificates/approvals</b><br><a href="https://support.industry.siemens.com/cs/US/en/ps/US2:40HP32WA/certificate">https://support.industry.siemens.com/cs/US/en/ps/US2:40HP32WA/certificate</a>  |   |



## WIRING DIAGRAM



D29223001



# Mouser Electronics

Authorized Distributor

Click to View Pricing, Inventory, Delivery & Lifecycle Information:

Siemens:

40HP32WA