



Continuous light element, with integrated LED, red, 24 V AC/DC, Diameter 70 mm

product brand name	SIRIUS		
product designation	Continuous light element		
design of the product	including light sources		
General technical data			
type of voltage of the operating voltage	AC/DC		
operating voltage			
• 1 at DC rated value			
• 1 at AC at 50 Hz rated value			
• 1 at AC at 60 Hz rated value			
relative positive tolerance of the operating voltage	10 %		
relative negative tolerance of the operating voltage	-10 %		
consumed current maximum	40 mA		
reference code according to EN 61346-2	P		
Lamp			
product component light source	Yes		
type of light source	LED		
service life of LED	100 000 h		
design of the optical signal	continuous light		
light intensity	0.79 cd		
light intensity	0.53 ... 1.41 cd		
Enclosure			
height	65.5 mm		
width	70 mm		
outer diameter of the signal column element	70 mm		
material	PC		
color	red		
fastening method	Bayonet		
protection class IP	IP65		
Ambient conditions			
ambient temperature during operation	-20 ... +50 °C		
Certificates/ approvals			
General Product Approval		EMC	Declaration of Conformity

[Confirmation](#)



other

Further information

Siemens has decided to exit the Russian market (see here).

<https://press.siemens.com/global/en/pressrelease/siemens-wind-down-russian-business>

Siemens is working on the renewal of the current EAC certificates.

Please contact your local Siemens office on the status of validity of the EAC certification if you intend to import or offer to supply these products to an EAC relevant market (other than the sanctioned EAEU member states Russia or Belarus).

Information on the packaging

<https://support.industry.siemens.com/cs/ww/en/view/109813875>

Information- and Downloadcenter (Catalogs, Brochures,...)

<https://www.siemens.com/ic10>

Industry Mall (Online ordering system)

<https://mall.industry.siemens.com/mall/en/en/Catalog/product?mlfb=8WD4420-5AB>

Cax online generator

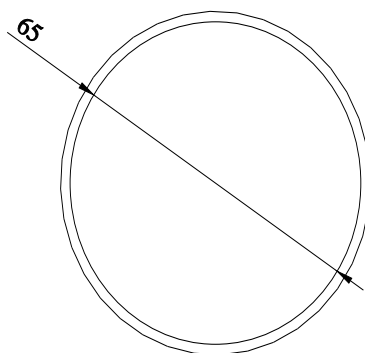
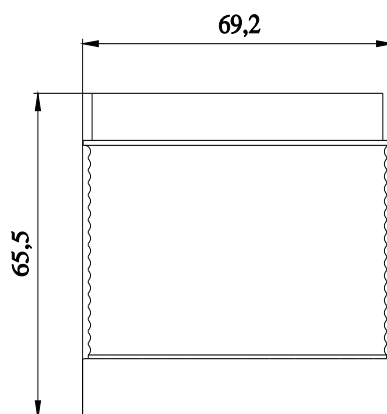
<http://support.automation.siemens.com/WW/CAXorder/default.aspx?lang=en&mlfb=8WD4420-5AB>

Service&Support (Manuals, Certificates, Characteristics, FAQs,...)

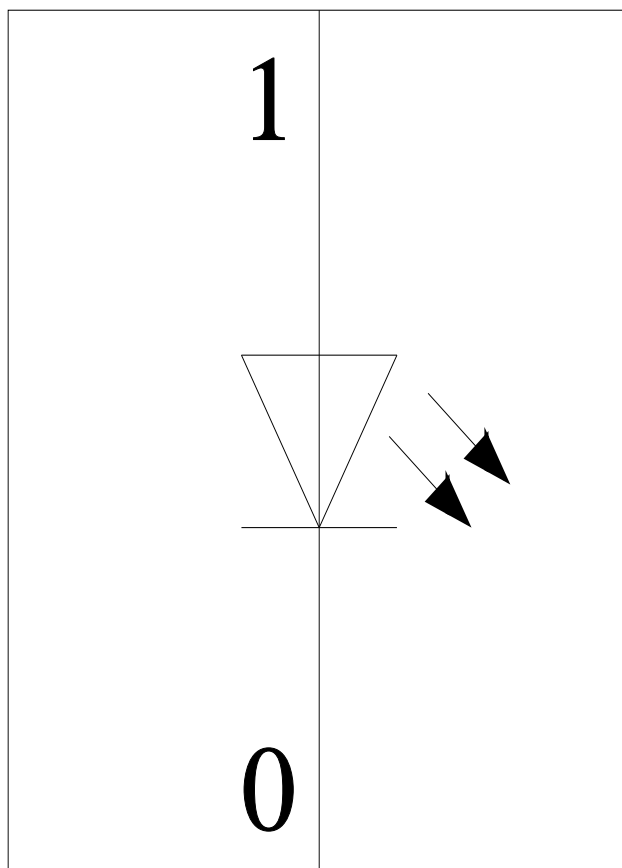
<https://support.industry.siemens.com/cs/ww/en/ps/8WD4420-5AB>

Image database (product images, 2D dimension drawings, 3D models, device circuit diagrams, EPLAN macros, ...)

http://www.automation.siemens.com/bilddb/cax_de.aspx?mlfb=8WD4420-5AB&lang=en



-P



last modified:

2/25/2021 

Mouser Electronics

Authorized Distributor

Click to View Pricing, Inventory, Delivery & Lifecycle Information:

Siemens:

8WD44205AB