



SIRIUS soft starter 200-600 V 38 A, 110-250 V AC Screw terminals

product brand name	SIRIUS
product category	Hybrid switching devices
product designation	Soft starter
product type designation	3RW55
manufacturer's article number	<ul style="list-style-type: none"> of high feature HMI module usable 3RW5980-0HF00 of communication module PROFINET standard usable 3RW5980-0CS00 of communication module PROFINET high-feature usable 3RW5950-0CH00 of communication module PROFIBUS usable 3RW5980-0CP00 of communication module Modbus TCP usable 3RW5980-0CT00 of communication module Modbus RTU usable 3RW5980-0CR00 of communication module Ethernet/IP 3RW5980-0CE00 of circuit breaker usable at 400 V 3RV2032-4WA10; Type of coordination 1, Iq = 65 kA, CLASS 10 of circuit breaker usable at 500 V 3RV2032-4WA10; Type of coordination 1, Iq = 10 kA, CLASS 10 of circuit breaker usable at 400 V at inside-delta circuit 3RV2032-4RA10; Type of coordination 1, Iq = 65 kA, CLASS 10 of circuit breaker usable at 500 V at inside-delta circuit 3RV2032-4RA10; Type of coordination 1, Iq = 10 kA, CLASS 10 of the gG fuse usable up to 690 V 3NA3824-6; Type of coordination 1, Iq = 65 kA of the gG fuse usable at inside-delta circuit up to 500 V 3NA3824-6; Type of coordination 1, Iq = 65 kA of full range R fuse link for semiconductor protection usable up to 690 V 3NE1820-0; Type of coordination 2, Iq = 65 kA of back-up R fuse link for semiconductor protection usable up to 690 V 3NE8024-1; Type of coordination 2, Iq = 65 kA
General technical data	
starting voltage [%]	20 ... 100 %
stopping voltage [%]	50 %; non-adjustable
start-up ramp time of soft starter	0 ... 360 s
ramp-down time of soft starter	0 ... 360 s
start torque [%]	10 ... 100 %
stopping torque [%]	10 ... 100 %
torque limitation [%]	20 ... 200 %
current limiting value [%] adjustable	125 ... 800 %
breakaway voltage [%] adjustable	40 ... 100 %
breakaway time adjustable	0 ... 2 s
number of parameter sets	3
accuracy class	5 (based on IEC 61557-12)
certificate of suitability	<ul style="list-style-type: none"> CE marking Yes UL approval Yes CSA approval Yes
product component	<ul style="list-style-type: none"> HMI-High Feature Yes

• is supported HMI-High Feature	Yes
product feature integrated bypass contact system	Yes
number of controlled phases	3
trip class	CLASS 10A / 10E (default) / 20E / 30E; acc. to IEC 60947-4-2
current unbalance limiting value [%]	10 ... 60 %
ground-fault monitoring limiting value [%]	10 ... 95 %
buffering time in the event of power failure	
• for main current circuit	100 ms
• for control circuit	100 ms
idle time adjustable	0 ... 255 s
insulation voltage rated value	600 V
degree of pollution	3, acc. to IEC 60947-4-2
impulse voltage rated value	6 kV
blocking voltage of the thyristor maximum	1 600 V
service factor	1.15
surge voltage resistance rated value	6 kV
maximum permissible voltage for protective separation	
• between main and auxiliary circuit	600 V; does not apply for thermistor connection
shock resistance	15 g / 11 ms, from 6 g / 11 ms with potential contact lifting
vibration resistance	15 mm up to 6 Hz; 2 g up to 500 Hz
recovery time after overload trip adjustable	60 ... 1 800 s
utilization category according to IEC 60947-4-2	AC 53a
reference code according to IEC 81346-2	Q
Substance Prohibitance (Date)	02/15/2018
product function	
• ramp-up (soft starting)	Yes
• ramp-down (soft stop)	Yes
• breakaway pulse	Yes
• adjustable current limitation	Yes
• creep speed in both directions of rotation	Yes
• pump ramp down	Yes
• DC braking	Yes
• motor heating	Yes
• slave pointer function	Yes
• trace function	Yes
• intrinsic device protection	Yes
• motor overload protection	Yes; Full motor protection (thermistor motor protection and electronic motor overload protection) / When using the motor overload protection according to ATEX, an upstream contactor is required in inside-delta circuit.
• evaluation of thermistor motor protection	Yes; Type A PTC or Klaxon / Thermoclick
• inside-delta circuit	Yes
• auto-RESET	Yes
• manual RESET	Yes
• remote reset	Yes
• communication function	Yes
• operating measured value display	Yes
• event list	Yes
• error logbook	Yes
• via software parameterizable	Yes
• via software configurable	Yes
• screw terminal	Yes
• spring-loaded terminal	No
• PROFInergy	Yes; in connection with the PROFINET Standard and PROFINET High-Feature communication modules
• firmware update	Yes
• removable terminal for control circuit	Yes
• voltage ramp	Yes
• torque control	Yes
• combined braking	Yes
• analog output	Yes; 4 ... 20 mA (default) / 0 ... 10 V
• programmable control inputs/outputs	Yes
• condition monitoring	Yes

<ul style="list-style-type: none"> • automatic parameterisation • application wizards • alternative run-down • emergency operation mode • reversing operation • soft starting at heavy starting conditions 	Yes Yes Yes Yes Yes Yes
Power Electronics	
operational current	
<ul style="list-style-type: none"> • at 40 °C rated value • at 40 °C rated value minimum • at 50 °C rated value • at 60 °C rated value 	38 A 7.5 A 33.5 A 30.5 A
operational current at inside-delta circuit	
<ul style="list-style-type: none"> • at 40 °C rated value • at 50 °C rated value • at 60 °C rated value 	65.8 A 58 A 52.8 A
operating voltage	
<ul style="list-style-type: none"> • rated value • at inside-delta circuit rated value 	200 ... 600 V 200 ... 600 V
relative negative tolerance of the operating voltage	-15 %
relative positive tolerance of the operating voltage	10 %
relative negative tolerance of the operating voltage at inside-delta circuit	-15 %
relative positive tolerance of the operating voltage at inside-delta circuit	10 %
operating power for 3-phase motors	
<ul style="list-style-type: none"> • at 230 V at 40 °C rated value • at 230 V at inside-delta circuit at 40 °C rated value • at 400 V at 40 °C rated value • at 400 V at inside-delta circuit at 40 °C rated value • at 500 V at 40 °C rated value • at 500 V at inside-delta circuit at 40 °C rated value 	11 kW 18.5 kW 18.5 kW 30 kW 22 kW 37 kW
Operating frequency 1 rated value	50 Hz
Operating frequency 2 rated value	60 Hz
relative negative tolerance of the operating frequency	-10 %
relative positive tolerance of the operating frequency	10 %
minimum load [%]	10 %; Relative to set I _e
power loss [W] for rated value of the current at AC	
<ul style="list-style-type: none"> • at 40 °C after startup • at 50 °C after startup • at 60 °C after startup 	11 W 10 W 9 W
power loss [W] at AC at current limitation 350 %	
<ul style="list-style-type: none"> • at 40 °C during startup • at 50 °C during startup • at 60 °C during startup 	616 W 511 W 447 W
type of the motor protection	Electronic, tripping in the event of thermal overload of the motor
Control circuit/ Control	
type of voltage of the control supply voltage	AC
control supply voltage at AC	
<ul style="list-style-type: none"> • at 50 Hz • at 60 Hz 	110 ... 250 V 110 ... 250 V
relative negative tolerance of the control supply voltage at AC at 50 Hz	-15 %
relative positive tolerance of the control supply voltage at AC at 50 Hz	10 %
relative negative tolerance of the control supply voltage at AC at 60 Hz	-15 %
relative positive tolerance of the control supply voltage at AC at 60 Hz	10 %
control supply voltage frequency	50 ... 60 Hz
relative negative tolerance of the control supply voltage frequency	-10 %
relative positive tolerance of the control supply voltage	10 %

frequency	
control supply current in standby mode rated value	100 mA
holding current in bypass operation rated value	165 mA
inrush current by closing the bypass contacts maximum	0.2 A
inrush current peak at application of control supply voltage maximum	43 A
duration of inrush current peak at application of control supply voltage	1.6 ms
design of the overvoltage protection	Varistor
design of short-circuit protection for control circuit	4 A gG fuse (Icu=1 kA), 6 A quick-acting fuse (Icu=1 kA), C1 miniature circuit breaker (Icu= 600 A), C6 miniature circuit breaker (Icu= 300 A); Is not part of scope of supply
Inputs/ Outputs	
number of digital inputs	4
• parameterizable	4
• number of digital outputs	4
• number of digital outputs parameterizable	3
• number of digital outputs not parameterizable	1
digital output version	3 normally-open contacts (NO) / 1 changeover contact (CO)
number of analog outputs	1
switching capacity current of the relay outputs	
• at AC-15 at 250 V rated value	3 A
• at DC-13 at 24 V rated value	1 A
Installation/ mounting/ dimensions	
mounting position	Vertical (can be rotated +/- 90° and tilted forward or backward +/- 22.5°)
fastening method	screw fixing
height	275 mm
width	170 mm
depth	152 mm
required spacing with side-by-side mounting	
• forwards	10 mm
• backwards	0 mm
• upwards	100 mm
• downwards	75 mm
• at the side	5 mm
weight without packaging	2.6 kg
Connections/ Terminals	
type of electrical connection	
• for main current circuit	screw-type terminals
• for control circuit	screw-type terminals
wire length for thermistor connection	
• with conductor cross-section = 0.5 mm² maximum	50 m
• with conductor cross-section = 1.5 mm² maximum	150 m
• with conductor cross-section = 2.5 mm² maximum	250 m
type of connectable conductor cross-sections	
• for main contacts	
— solid	2x (1.0 ... 2.5 mm²), 2x (2.5 ... 10 mm²)
— finely stranded with core end processing	2x (1.0 ... 2.5 mm²), 2x (2.5 ... 6.0 mm²)
• for AWG cables for main current circuit solid	2x (16 ... 12), 2x (14 ... 8)
type of connectable conductor cross-sections	
• for control circuit solid	1x (0.5 ... 4.0 mm²), 2x (0.5 ... 2.5 mm²)
• for control circuit finely stranded with core end processing	1x (0.5 ... 2.5 mm²), 2x (0.5 ... 1.5 mm²)
• for AWG cables for control circuit solid	1x (20 ... 12), 2x (20 ... 14)
wire length	
• between soft starter and motor maximum	800 m
• at the digital inputs at DC maximum	1 000 m
Ambient conditions	
installation altitude at height above sea level maximum	5 000 m; Derating as of 1000 m, see catalog
ambient temperature	
• during operation	-25 ... +60 °C; Please observe derating at temperatures of 40 °C or above
• during storage and transport	-25 ... +80 °C

environmental category	
<ul style="list-style-type: none"> during operation according to IEC 60721 during storage according to IEC 60721 during transport according to IEC 60721 	3K6 (no ice formation, only occasional condensation), 3C3 (no salt mist), 3S2 (sand must not get into the devices), 3M6 1K6 (only occasional condensation), 1C2 (no salt mist), 1S2 (sand must not get inside the devices), 1M4 2K2, 2C1, 2S1, 2M2 (max. fall height 0.3 m)
EMC emitted interference	
acc. to IEC 60947-4-2: Class A, Class B on request	
Communication/ Protocol	
communication module is supported	
<ul style="list-style-type: none"> PROFINET standard PROFINET high-feature EtherNet/IP Modbus RTU Modbus TCP PROFIBUS 	Yes No No No Yes Yes
UL/CSA ratings	
manufacturer's article number	
<ul style="list-style-type: none"> of circuit breaker <ul style="list-style-type: none"> — usable for Standard Faults at 460/480 V according to UL — usable for High Faults at 460/480 V according to UL — usable for Standard Faults at 460/480 V at inside-delta circuit according to UL — usable for High Faults at 460/480 V at inside-delta circuit according to UL — usable for Standard Faults at 575/600 V according to UL — usable for High Faults at 575/600 V at inside-delta circuit according to UL — usable for Standard Faults at 575/600 V at inside-delta circuit according to UL of the fuse <ul style="list-style-type: none"> — usable for Standard Faults up to 575/600 V according to UL — usable for High Faults up to 575/600 V according to UL — usable for Standard Faults at inside-delta circuit up to 575/600 V according to UL — usable for High Faults at inside-delta circuit up to 575/600 V according to UL 	Siemens type: 3RV2742, max. 70 A or 3VA51, max. 125 A; Iq = 5 kA Siemens type: 3RV2742, max. 40 A or 3VA51, max. 60 A; Iq max = 65 kA Siemens type: 3RV2742, max. 70 A or 3VA51, max. 125 A; Iq = 5 kA Siemens type: 3VA51, max. 60 A; Iq max = 65 kA Siemens type: 3RV2742, max. 70 A or 3VA51, max. 125 A; Iq = 5 kA Siemens type: 3VA51, max. 60 A; Iq max = 65 kA Siemens type: 3RV2742, max. 70 A or 3VA51, max. 125 A; Iq = 5 kA Type: Class RK5 / K5, max. 150 A; Iq = 5 kA Type: Class J / L, max. 150 A; Iq = 100 kA Type: Class RK5 / K5, max. 150 A; Iq = 5 kA Type: Class J / L, max. 150 A; Iq = 100 kA
operating power [hp] for 3-phase motors	
<ul style="list-style-type: none"> at 200/208 V at 50 °C rated value at 220/230 V at 50 °C rated value at 460/480 V at 50 °C rated value at 575/600 V at 50 °C rated value at 200/208 V at inside-delta circuit at 50 °C rated value at 220/230 V at inside-delta circuit at 50 °C rated value at 460/480 V at inside-delta circuit at 50 °C rated value at 575/600 V at inside-delta circuit at 50 °C rated value 	10 hp 10 hp 20 hp 30 hp 15 hp 20 hp 40 hp 50 hp
contact rating of auxiliary contacts according to UL	
R300-B300	
Safety related data	
protection class IP on the front according to IEC 60529	
IP20	
touch protection on the front according to IEC 60529	
finger-safe, for vertical contact from the front	
electromagnetic compatibility	
acc. to IEC 60947-4-2	
ATEX	
certificate of suitability	
<ul style="list-style-type: none"> ATEX IECEX according to ATEX directive 2014/34/EU 	Yes Yes BVS 18 ATEX F 003 X
type of protection according to ATEX directive 2014/34/EU	
II (2)G [Ex eb Gb] [Ex db Gb] [Ex pxb Gb], II (2)D [Ex tb Db] [Ex pxb Db], I (M2) [Ex db Mb]	
hardware fault tolerance according to IEC 61508 relating to ATEX	
0	
Safety Integrity Level (SIL) according to IEC 61508 relating to ATEX	
SIL1	

Certificates/ approvals

General Product Approval	EMC
--------------------------	-----



[Confirmation](#)



For use in hazardous locations	Declaration of Con- formity	Test Certificates	Marine / Shipping
--------------------------------	--------------------------------	-------------------	-------------------



[Type Test Certificates/Test Report](#)



Marine / Shipping	other
-------------------	-------



[Confirmation](#)

Further information

Siemens has decided to exit the Russian market (see here).

<https://press.siemens.com/global/en/pressrelease/siemens-wind-down-russian-business>

Siemens is working on the renewal of the current EAC certificates.

Please contact your local Siemens office on the status of validity of the EAC certification if you intend to import or offer to supply these products to an EAC relevant market (other than the sanctioned EAEU member states Russia or Belarus).

Information on the packaging

<https://support.industry.siemens.com/cs/ww/en/view/109813875>

Information- and Downloadcenter (Catalogs, Brochures,...)

<https://www.siemens.com/ic10>

Industry Mall (Online ordering system)

<https://mall.industry.siemens.com/mall/en/en/Catalog/product?mlfb=3RW5517-1HA15>

Cax online generator

<http://support.automation.siemens.com/WW/CAXorder/default.aspx?lang=en&mlfb=3RW5517-1HA15>

Service&Support (Manuals, Certificates, Characteristics, FAQs,...)

<https://support.industry.siemens.com/cs/ww/en/ps/3RW5517-1HA15>

Image database (product images, 2D dimension drawings, 3D models, device circuit diagrams, EPLAN macros, ...)

http://www.automation.siemens.com/bilddb/cax_de.aspx?mlfb=3RW5517-1HA15&lang=en

Characteristic: Tripping characteristics, I_t, Let-through current

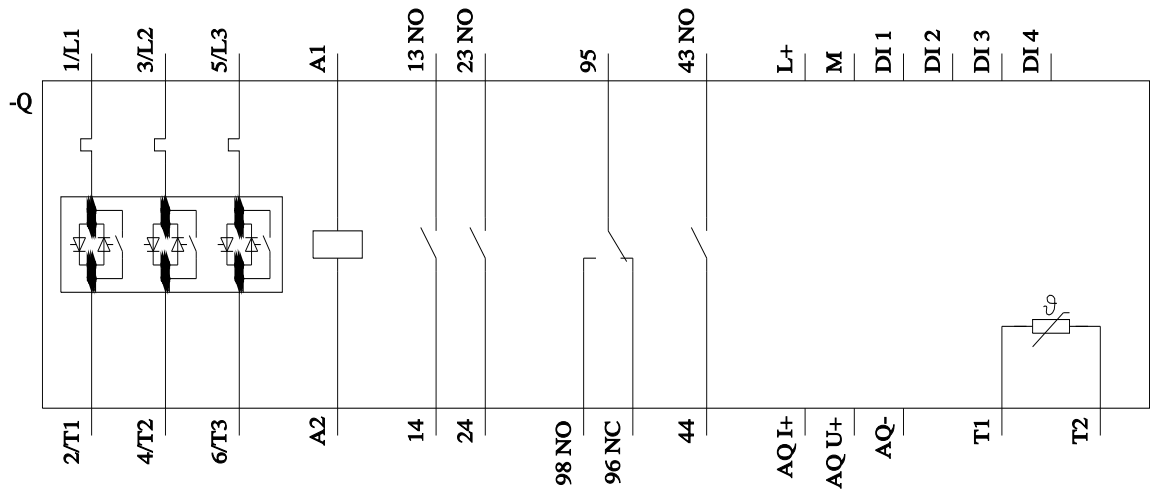
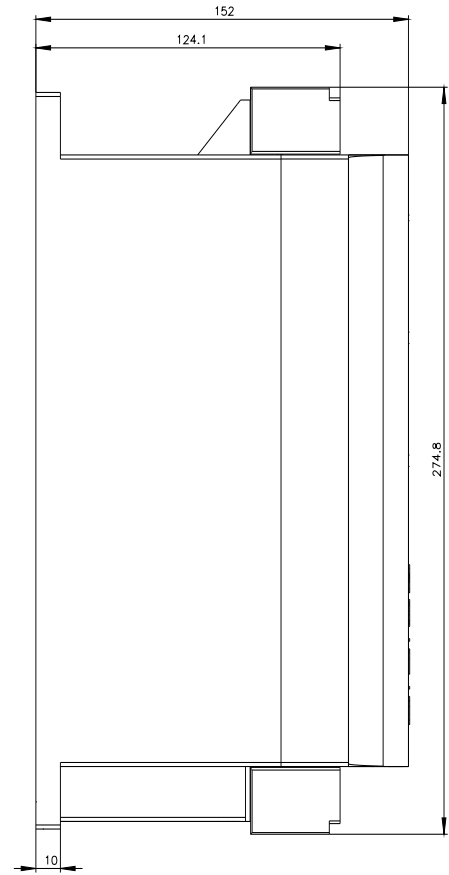
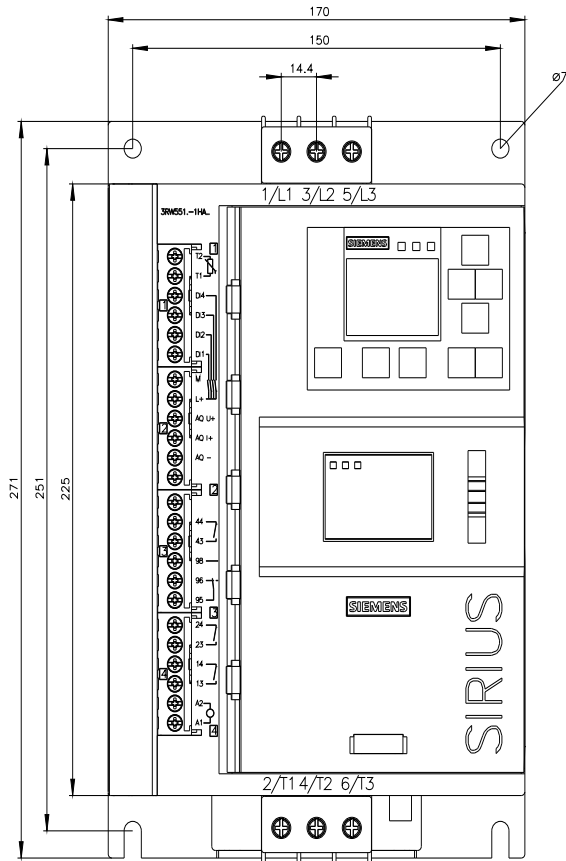
<https://support.industry.siemens.com/cs/ww/en/ps/3RW5517-1HA15/char>

Characteristic: Installation altitude

<http://www.automation.siemens.com/bilddb/index.aspx?view=Search&mlfb=3RW5517-1HA15&objecttype=14&gridview=view1>

Simulation Tool for Soft Starters (STS)

<https://support.industry.siemens.com/cs/ww/en/view/101494917>



Mouser Electronics

Authorized Distributor

Click to View Pricing, Inventory, Delivery & Lifecycle Information:

Siemens:

[3RW55171HA15](#)