



surge suppressor, varistor with LED, 24-48 V AC, 50/60 Hz, 12-24 V DC, for contactors 3RT2.2, multi-unit packaging, pack = 10 units

product brand name	SIRIUS
product category	Surge suppressor
<b>General technical data</b>	
certificate of suitability	CE / UL / CSA
size of contactor	S0
Substance Prohibitance (Date)	10/01/2009
SVHC substance name	Lead - 7439-92-1
Weight	0.004 kg
type of voltage of the control supply voltage	AC/DC
control supply voltage at AC	
• at 50 Hz rated value	24 ... 48 V
• at 60 Hz rated value	24 ... 48 V
control supply voltage frequency	
• 1 rated value	50 Hz
• 2 rated value	60 Hz
control supply voltage at DC rated value	12 ... 24 V
design of the surge suppressor	Varistor
<b>Ambient conditions</b>	
ambient temperature	
• during operation	-25 ... +60 °C
• during storage	-40 ... +80 °C
<b>Installation/ mounting/ dimensions</b>	
mounting position	any
fastening method	clip-on
height	19 mm
width	30 mm
depth	12 mm
<b>Further information</b>	

### Information on the packaging

<https://support.industry.siemens.com/cs/ww/en/view/109813875>

### Information- and Downloadcenter (Catalogs, Brochures,...)

<https://www.siemens.com/ic10>

### Industry Mall (Online ordering system)

<https://mall.industry.siemens.com/mall/en/en/Catalog/product?mlfb=3RT2926-1JJ00-Z X90>

### Cax online generator

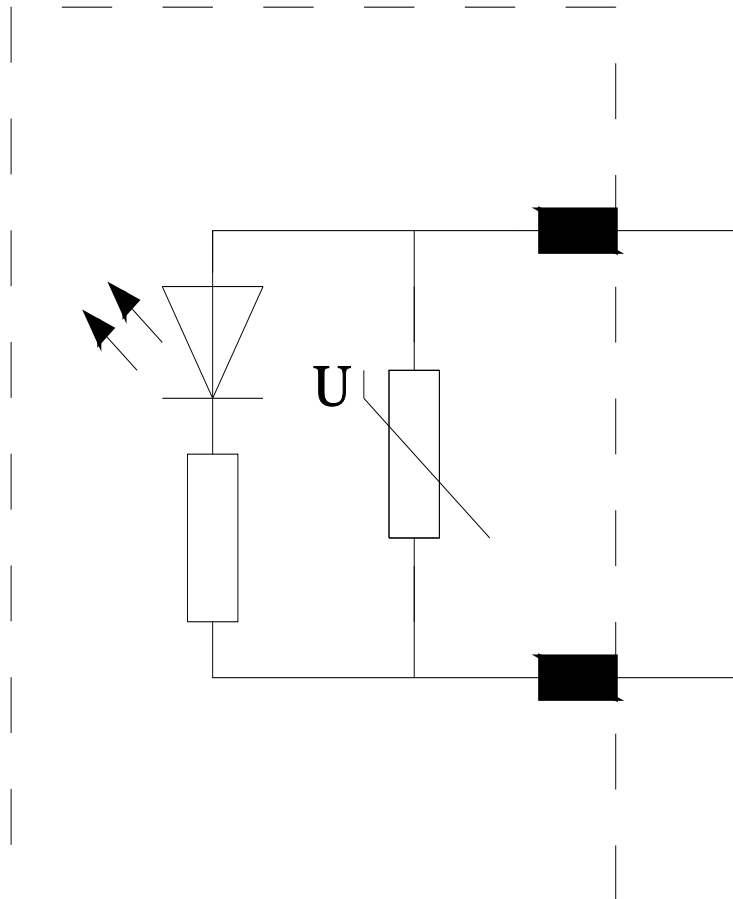
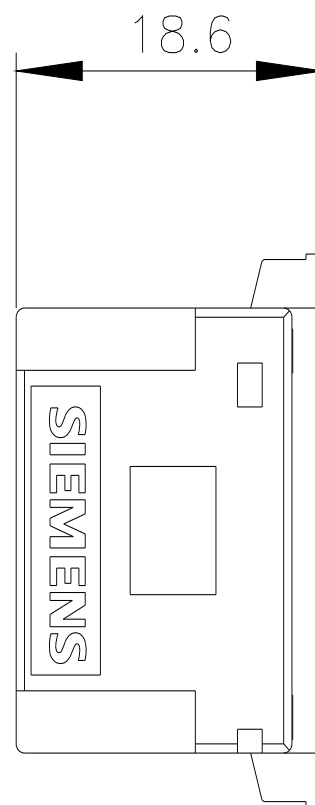
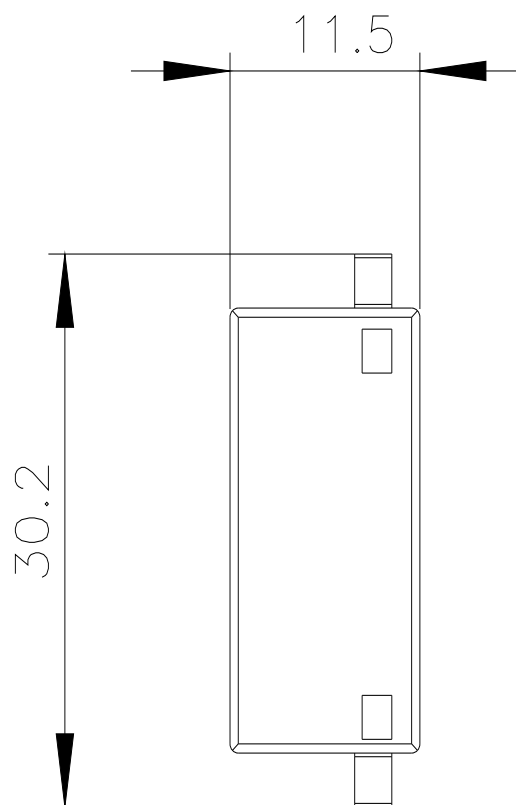
<http://support.automation.siemens.com/WW/CAXorder/default.aspx?lang=en&mlfb=3RT2926-1JJ00-Z X90>

### Service&Support (Manuals, Certificates, Characteristics, FAQs,...)

<https://support.industry.siemens.com/cs/ww/en/ps/3RT2926-1JJ00-Z X90>

### Image database (product images, 2D dimension drawings, 3D models, device circuit diagrams, EPLAN macros, ...)

[http://www.automation.siemens.com/bilddb/cax\\_de.aspx?mlfb=3RT2926-1JJ00-Z X90&lang=en](http://www.automation.siemens.com/bilddb/cax_de.aspx?mlfb=3RT2926-1JJ00-Z X90&lang=en)





# Mouser Electronics

Authorized Distributor

Click to View Pricing, Inventory, Delivery & Lifecycle Information:

[Siemens:](#)

[A6X30073965](#)