



power contactor, AC-3e/AC-3 300 A, 160 kW / 400 V, AC (50-60 Hz) / DC U_c: 21-27, 3 V PLC input 24 V DC 3-pole, auxiliary contacts 2 NO + 2 NC drive: electronic main circuit: busbar control and auxiliary circuit: screw terminal

product brand name	SIRIUS
product designation	Power contactor
product type designation	3RT1
General technical data	
size of contactor	S10
product extension	
• function module for communication	No
• auxiliary switch	Yes
power loss [W] for rated value of the current	
• at AC in hot operating state	66 W
• at AC in hot operating state per pole	22 W
• without load current share typical	3.4 W
insulation voltage	
• of main circuit with degree of pollution 3 rated value	1 000 V
• of auxiliary circuit with degree of pollution 3 rated value	500 V
surge voltage resistance	
• of main circuit rated value	8 kV
• of auxiliary circuit rated value	6 kV
maximum permissible voltage for protective separation between coil and main contacts according to EN 60947-1	690 V
shock resistance at rectangular impulse	
• at AC	8,5g / 5 ms, 4,2g / 10 ms
• at DC	8,5g / 5 ms, 4,2g / 10 ms
shock resistance with sine pulse	
• at AC	13,4g / 5 ms, 6,5g / 10 ms
• at DC	13,4g / 5 ms, 6,5g / 10 ms
mechanical service life (operating cycles)	
• of contactor typical	10 000 000
• of the contactor with added electronically optimized auxiliary switch block typical	5 000 000
• of the contactor with added auxiliary switch block typical	10 000 000
reference code according to IEC 81346-2	Q
Substance Prohibition (Date)	05/01/2012
SVHC substance name	Blei - 7439-92-1
Ambient conditions	
installation altitude at height above sea level maximum	2 000 m
ambient temperature	
• during operation	-25 ... +60 °C
• during storage	-55 ... +80 °C
relative humidity minimum	10 %
relative humidity at 55 °C according to IEC 60068-2-30	95 %

maximum	
Main circuit	
number of poles for main current circuit	3
number of NO contacts for main contacts	3
operating voltage	
• at AC-3 rated value maximum	1 000 V
• at AC-3e rated value maximum	1 000 V
operational current	
• at AC-1 at 400 V at ambient temperature 40 °C rated value	330 A
• at AC-1	
— up to 690 V at ambient temperature 40 °C rated value	330 A
— up to 690 V at ambient temperature 60 °C rated value	300 A
— up to 1000 V at ambient temperature 40 °C rated value	150 A
— up to 1000 V at ambient temperature 60 °C rated value	150 A
• at AC-3	
— at 400 V rated value	300 A
— at 500 V rated value	300 A
— at 690 V rated value	280 A
— at 1000 V rated value	95 A
• at AC-3e	
— at 400 V rated value	300 A
— at 500 V rated value	300 A
— at 690 V rated value	280 A
— at 1000 V rated value	95 A
• at AC-4 at 400 V rated value	280 A
• at AC-5a up to 690 V rated value	290 A
• at AC-5b up to 400 V rated value	249 A
• at AC-6a	
— up to 230 V for current peak value n=20 rated value	292 A
— up to 400 V for current peak value n=20 rated value	292 A
— up to 500 V for current peak value n=20 rated value	292 A
— up to 690 V for current peak value n=20 rated value	280 A
— up to 1000 V for current peak value n=20 rated value	95 A
• at AC-6a	
— up to 230 V for current peak value n=30 rated value	195 A
— up to 400 V for current peak value n=30 rated value	195 A
— up to 500 V for current peak value n=30 rated value	195 A
— up to 690 V for current peak value n=30 rated value	195 A
— up to 1000 V for current peak value n=30 rated value	95 A
minimum cross-section in main circuit at maximum AC-1 rated value	185 mm ²
operational current for approx. 200000 operating cycles at AC-4	
• at 400 V rated value	125 A
• at 690 V rated value	115 A
operational current	
• at 1 current path at DC-1	
— at 24 V rated value	300 A
— at 60 V rated value	300 A
— at 110 V rated value	33 A
— at 220 V rated value	3.8 A
— at 440 V rated value	0.9 A
— at 600 V rated value	0.6 A
• with 2 current paths in series at DC-1	
— at 24 V rated value	300 A
— at 60 V rated value	300 A

— at 110 V rated value	300 A
— at 220 V rated value	300 A
— at 440 V rated value	4 A
— at 600 V rated value	2 A
● with 3 current paths in series at DC-1	
— at 24 V rated value	300 A
— at 60 V rated value	300 A
— at 110 V rated value	300 A
— at 220 V rated value	300 A
— at 440 V rated value	11 A
— at 600 V rated value	5.2 A
● at 1 current path at DC-3 at DC-5	
— at 24 V rated value	300 A
— at 60 V rated value	11 A
— at 220 V rated value	0.6 A
— at 440 V rated value	0.18 A
— at 600 V rated value	0.125 A
● with 2 current paths in series at DC-3 at DC-5	
— at 24 V rated value	300 A
— at 60 V rated value	300 A
— at 110 V rated value	300 A
— at 220 V rated value	2.5 A
— at 440 V rated value	0.65 A
— at 600 V rated value	0.37 A
● with 3 current paths in series at DC-3 at DC-5	
— at 24 V rated value	300 A
— at 60 V rated value	300 A
— at 110 V rated value	300 A
— at 220 V rated value	300 A
— at 440 V rated value	1.4 A
— at 600 V rated value	0.75 A
operating power	
● at AC-3	
— at 230 V rated value	90 kW
— at 400 V rated value	160 kW
— at 500 V rated value	200 kW
— at 690 V rated value	250 kW
— at 1000 V rated value	132 kW
● at AC-3e	
— at 230 V rated value	90 kW
— at 400 V rated value	160 kW
— at 500 V rated value	200 kW
— at 690 V rated value	250 kW
— at 1000 V rated value	132 kW
operating power for approx. 200000 operating cycles at AC-4	
● at 400 V rated value	71 kW
● at 690 V rated value	112 kW
operating apparent power at AC-6a	
● up to 230 V for current peak value n=20 rated value	110 000 kVA
● up to 400 V for current peak value n=20 rated value	200 000 VA
● up to 500 V for current peak value n=20 rated value	250 000 VA
● up to 690 V for current peak value n=20 rated value	330 000 VA
● up to 1000 V for current peak value n=20 rated value	160 000 VA
operating apparent power at AC-6a	
● up to 230 V for current peak value n=30 rated value	70 000 VA
● up to 400 V for current peak value n=30 rated value	130 000 VA
● up to 500 V for current peak value n=30 rated value	160 000 VA
● up to 690 V for current peak value n=30 rated value	230 000 VA
● up to 1000 V for current peak value n=30 rated value	160 000 VA
short-time withstand current in cold operating state up to	

40 °C	
<ul style="list-style-type: none"> • limited to 1 s switching at zero current maximum • limited to 5 s switching at zero current maximum • limited to 10 s switching at zero current maximum • limited to 30 s switching at zero current maximum • limited to 60 s switching at zero current maximum 	5 524 A; Use minimum cross-section acc. to AC-1 rated value 4 579 A; Use minimum cross-section acc. to AC-1 rated value 3 153 A; Use minimum cross-section acc. to AC-1 rated value 1 883 A; Use minimum cross-section acc. to AC-1 rated value 1 445 A; Use minimum cross-section acc. to AC-1 rated value
no-load switching frequency	
<ul style="list-style-type: none"> • at AC • at DC 	1 000 1/h 1 000 1/h
operating frequency	
<ul style="list-style-type: none"> • at AC-1 maximum • at AC-2 maximum • at AC-3 maximum • at AC-3e maximum • at AC-4 maximum 	750 1/h 250 1/h 500 1/h 500 1/h 130 1/h
Control circuit/ Control	
type of voltage of the control supply voltage	AC/DC
control supply voltage at AC	
<ul style="list-style-type: none"> • at 50 Hz rated value • at 60 Hz rated value 	21 ... 27.3 V 21 ... 27.3 V
control supply voltage at DC	
<ul style="list-style-type: none"> • rated value 	21 ... 27.3 V
operating range factor control supply voltage rated value of magnet coil at DC	
<ul style="list-style-type: none"> • initial value • full-scale value 	0.8 1.1
operating range factor control supply voltage rated value of magnet coil at AC	
<ul style="list-style-type: none"> • at 50 Hz • at 60 Hz 	0.8 ... 1.1 0.8 ... 1.1
type of PLC-control input according to IEC 60947-1	Type 2
consumed current at PLC-control input according to IEC 60947-1 maximum	20 mA
voltage at PLC-control input rated value	24 V
operating range factor of the voltage at PLC-control input	0.8 ... 1.1
design of the surge suppressor	with varistor
apparent pick-up power	
<ul style="list-style-type: none"> • at minimum rated control supply voltage at AC <ul style="list-style-type: none"> — at 50 Hz — at 60 Hz • at maximum rated control supply voltage at AC <ul style="list-style-type: none"> — at 60 Hz — at 50 Hz 	400 VA 400 VA 530 VA 530 VA
apparent pick-up power of magnet coil at AC	
<ul style="list-style-type: none"> • at 50 Hz • at 60 Hz 	530 VA 530 VA
inductive power factor with closing power of the coil	
<ul style="list-style-type: none"> • at 50 Hz • at 60 Hz 	0.8 0.8
apparent holding power	
<ul style="list-style-type: none"> • at minimum rated control supply voltage at DC • at maximum rated control supply voltage at DC 	2.8 VA 3.4 VA
apparent holding power	
<ul style="list-style-type: none"> • at minimum rated control supply voltage at AC <ul style="list-style-type: none"> — at 50 Hz — at 60 Hz • at maximum rated control supply voltage at AC <ul style="list-style-type: none"> — at 50 Hz — at 60 Hz 	5.5 VA 5.5 VA 8.5 VA 8.5 VA
apparent holding power of magnet coil at AC	
<ul style="list-style-type: none"> • at 50 Hz • at 60 Hz 	8.5 VA 8.5 VA

inductive power factor with the holding power of the coil	
• at 50 Hz	0.5
• at 60 Hz	0.4
closing power of magnet coil at DC	580 W
holding power of magnet coil at DC	3.4 W
closing delay	
• at AC	45 ... 80 ms
• at DC	45 ... 80 ms
opening delay	
• at AC	80 ... 100 ms
• at DC	80 ... 100 ms
arcing time	10 ... 15 ms
control version of the switch operating mechanism	PLC-IN or Standard A1 - A2 (adjustable)
Auxiliary circuit	
number of NC contacts for auxiliary contacts instantaneous contact	2
number of NO contacts for auxiliary contacts instantaneous contact	2
operational current at AC-12 maximum	10 A
operational current at AC-15	
• at 230 V rated value	6 A
• at 400 V rated value	3 A
• at 500 V rated value	2 A
• at 690 V rated value	1 A
operational current at DC-12	
• at 24 V rated value	10 A
• at 48 V rated value	6 A
• at 60 V rated value	6 A
• at 110 V rated value	3 A
• at 125 V rated value	2 A
• at 220 V rated value	1 A
• at 600 V rated value	0.15 A
operational current at DC-13	
• at 24 V rated value	10 A
• at 48 V rated value	2 A
• at 60 V rated value	2 A
• at 110 V rated value	1 A
• at 125 V rated value	0.9 A
• at 220 V rated value	0.3 A
• at 600 V rated value	0.1 A
contact reliability of auxiliary contacts	1 faulty switching per 100 million (17 V, 1 mA)
UL/CSA ratings	
full-load current (FLA) for 3-phase AC motor	
• at 480 V rated value	302 A
• at 600 V rated value	289 A
yielded mechanical performance [hp]	
• for 3-phase AC motor	
— at 200/208 V rated value	100 hp
— at 220/230 V rated value	125 hp
— at 460/480 V rated value	250 hp
— at 575/600 V rated value	300 hp
contact rating of auxiliary contacts according to UL	A600 / Q600
Short-circuit protection	
design of the fuse link	
• for short-circuit protection of the main circuit	
— with type of coordination 1 required	gG: 500 A (690 V, 100 kA)
— with type of assignment 2 required	gG: 400 A (690 V, 100 kA), aM: 315 A (690 V, 50 kA), BS88: 400 A (415 V, 50 kA)
• for short-circuit protection of the auxiliary switch required	gG: 10 A (500 V, 1 kA)
Installation/ mounting/ dimensions	
mounting position	with vertical mounting surface +/-90° rotatable, with vertical mounting surface +/- 22.5° tiltable to the front and back

fastening method	screw fixing
• side-by-side mounting	Yes
height	210 mm
width	145 mm
depth	202 mm
required spacing	
• with side-by-side mounting	
— forwards	20 mm
— upwards	10 mm
— downwards	10 mm
— at the side	0 mm
• for grounded parts	
— forwards	20 mm
— upwards	10 mm
— at the side	10 mm
— downwards	10 mm
• for live parts	
— forwards	20 mm
— upwards	10 mm
— downwards	10 mm
— at the side	10 mm
Connections/ Terminals	
type of electrical connection	
• for main current circuit	Connection bar
• for auxiliary and control circuit	screw-type terminals
• at contactor for auxiliary contacts	Screw-type terminals
• of magnet coil	Screw-type terminals
width of connection bar	25 mm
thickness of connection bar	6 mm
diameter of holes	11 mm
number of holes	1
connectable conductor cross-section for main contacts	
• stranded	70 ... 240 mm ²
connectable conductor cross-section for auxiliary contacts	
• solid or stranded	0.5 ... 4 mm ²
• finely stranded with core end processing	0.5 ... 2.5 mm ²
type of connectable conductor cross-sections	
• for auxiliary contacts	
— solid	2x (0.5 ... 1.5 mm ²), 2x (0.75 ... 2.5 mm ²), max. 2x (0.75 ... 4 mm ²)
— solid or stranded	2x (0.5 ... 1.5 mm ²), 2x (0.75 ... 2.5 mm ²), max. 2x (0.75 ... 4 mm ²)
— finely stranded with core end processing	2x (0.5 ... 1.5 mm ²), 2x (0.75 ... 2.5 mm ²)
• for AWG cables for auxiliary contacts	2x (20 ... 16), 2x (18 ... 14), 1x 12
AWG number as coded connectable conductor cross section	
• for auxiliary contacts	18 ... 14
Safety related data	
product function	
• mirror contact according to IEC 60947-4-1	Yes
• positively driven operation according to IEC 60947-5-1	No
suitability for use safety-related switching OFF	No
B10 value with high demand rate according to SN 31920	1 000 000
T1 value for proof test interval or service life according to IEC 61508	20 a
protection class IP on the front according to IEC 60529	IP00; IP20 with box terminal/cover
touch protection on the front according to IEC 60529	finger-safe, for vertical contact from the front with box terminal/cover
Certificates/ approvals	
General Product Approval	



[Confirmation](#)



[KC](#)



EMC	Functional Safety/Safety of Machinery	Declaration of Conformity	Test Certificates
-----	---------------------------------------	---------------------------	-------------------



[Type Examination Certificate](#)



[Type Test Certificates/Test Report](#)

[Special Test Certificate](#)

Marine / Shipping	other
-------------------	-------



[Miscellaneous](#)

other	Railway
-------	---------

[Confirmation](#)

[Confirmation](#)

[Miscellaneous](#)

[Vibration and Shock](#)

[Special Test Certificate](#)

Further information

Siemens has decided to exit the Russian market (see here).

<https://press.siemens.com/global/en/pressrelease/siemens-wind-down-russian-business>

Siemens is working on the renewal of the current EAC certificates.

Please contact your local Siemens office on the status of validity of the EAC certification if you intend to import or offer to supply these products to an EAC relevant market (other than the sanctioned EAEU member states Russia or Belarus).

Information on the packaging

<https://support.industry.siemens.com/cs/ww/en/view/109813875>

Information- and Downloadcenter (Catalogs, Brochures,...)

<https://www.siemens.com/ic10>

Industry Mall (Online ordering system)

<https://mall.industry.siemens.com/mall/en/en/Catalog/product?mlfb=3RT1066-6NB36>

Cax online generator

<http://support.automation.siemens.com/WW/CAXorder/default.aspx?lang=en&mlfb=3RT1066-6NB36>

Service&Support (Manuals, Certificates, Characteristics, FAQs,...)

<https://support.industry.siemens.com/cs/ww/en/ps/3RT1066-6NB36>

Image database (product images, 2D dimension drawings, 3D models, device circuit diagrams, EPLAN macros, ...)

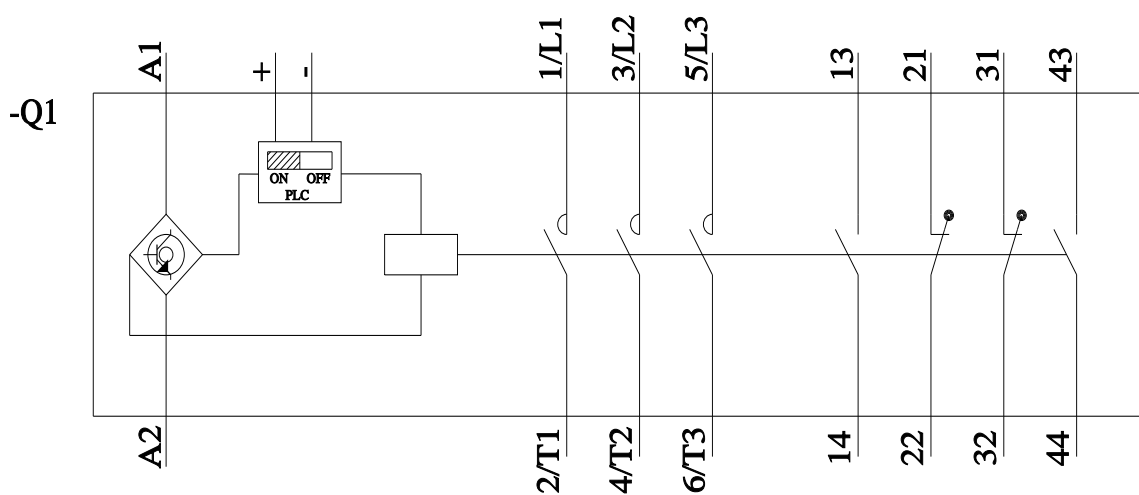
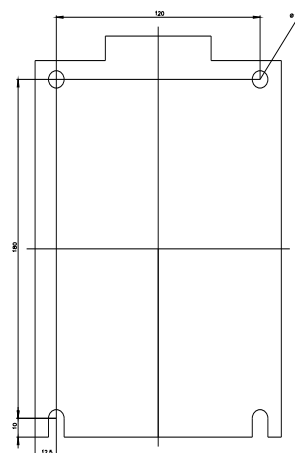
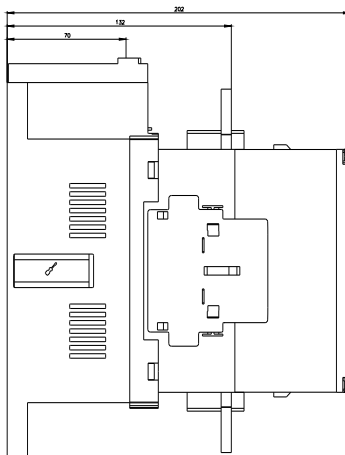
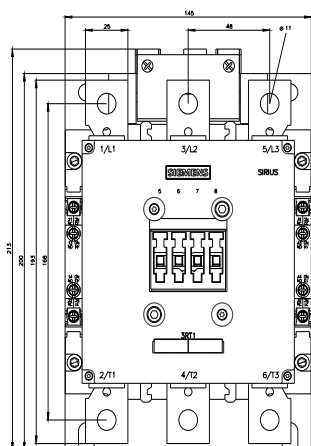
http://www.automation.siemens.com/bilddb/cax_de.aspx?mlfb=3RT1066-6NB36&lang=en

Characteristic: Tripping characteristics, I²t, Let-through current

<https://support.industry.siemens.com/cs/ww/en/ps/3RT1066-6NB36/char>

Further characteristics (e.g. electrical endurance, switching frequency)

<http://www.automation.siemens.com/bilddb/index.aspx?view=Search&mlfb=3RT1066-6NB36&objecttype=14&gridview=view1>



Mouser Electronics

Authorized Distributor

Click to View Pricing, Inventory, Delivery & Lifecycle Information:

Siemens:

[3RT10666NB36](#)