



front-side auxiliary switch, 1 NC contact, spring-type terminal, for contactors 3RT1

|   |  |
|---|--|
| product brand name  | SIRIUS                                   |
| product category  | Auxiliary switch                         |
| product designation   | auxiliary switch                         |
| design of the product   | for snapping onto the front              |
| product type designation  | 3RH19                                    |
| suitability for use   | for 3RT10, 3RT12, 3RT145, 3RT146, 3RT147 |
| General technical data  |  |
| insulation voltage with degree of pollution 3 at AC rated value   | 690 V                                    |
| surge voltage resistance rated value                              | 6 kV                                     |
| protection class IP on the front                                  | IP20                                     |
| mechanical service life (operating cycles) typical                | 10 000 000                               |
| electrical endurance (operating cycles) at AC-15 at 230 V typical | 200 000                                  |
| Substance Prohibittance (Date)                                    | 07/01/2006                               |
| Weight  | 0.017 kg                                 |
| number of NC contacts for auxiliary contacts                      |  |
| • instantaneous contact   | 1  |
| number of NO contacts for auxiliary contacts                      |  |
| • instantaneous contact   | 0  |
| number of CO contacts of auxiliary contacts instantaneous contact | 0  |
| operational current at AC-15 at 690 V rated value                 | 1 A                                      |
| operational current of auxiliary contacts at AC-12                |  |
| • at 24 V   | 10 A                                     |
| • at 230 V  | 10 A                                     |
| operational current of auxiliary contacts at AC-14                |  |
| • at 125 V  | 6 A                                      |
| • at 250 V  | 6 A                                      |
| operational current of auxiliary contacts at AC-12 maximum        | 10 A                                     |
| operational current of auxiliary contacts at AC-15                |  |
| • at 24 V   | 6 A                                      |
| • at 230 V  | 6 A                                      |
| • at 400 V  | 3 A                                      |
| operational current of auxiliary contacts at DC-12                |  |
| • at 24 V   | 10 A                                     |
| • at 110 V  | 3 A                                      |
| • at 220 V  | 1 A                                      |
| operational current with 2 current paths in series at DC-12       |  |
| • at 24 V rated value   | 10 A                                     |
| • at 60 V rated value   | 10 A                                     |
| • at 110 V rated value  | 4 A                                      |

|   |   |
|---|---|
| <ul style="list-style-type: none"> <li>• at 220 V rated value</li> <li>• at 440 V rated value</li> <li>• at 600 V rated value</li> </ul>  | 2 A<br>1.3 A<br>0.65 A  |
| <b>operational current with 3 current paths in series at DC-12</b> <ul style="list-style-type: none"> <li>• at 24 V rated value</li> <li>• at 60 V rated value</li> <li>• at 110 V rated value</li> <li>• at 220 V rated value</li> <li>• at 440 V rated value</li> <li>• at 600 V rated value</li> </ul>   | 10 A<br>10 A<br>10 A<br>3.6 A<br>2.5 A<br>1.8 A   |
| <b>operational current with 2 current paths in series at DC-13</b> <ul style="list-style-type: none"> <li>• at 24 V rated value</li> <li>• at 60 V rated value</li> <li>• at 110 V rated value</li> <li>• at 220 V rated value</li> <li>• at 440 V rated value</li> <li>• at 600 V rated value</li> </ul>   | 10 A<br>3.5 A<br>1.3 A<br>0.9 A<br>0.2 A<br>0.1 A   |
| <b>operational current with 3 current paths in series at DC-13</b> <ul style="list-style-type: none"> <li>• at 24 V rated value</li> <li>• at 60 V rated value</li> <li>• at 110 V rated value</li> <li>• at 220 V rated value</li> <li>• at 440 V rated value</li> <li>• at 600 V rated value</li> </ul>   | 10 A<br>4.7 A<br>3 A<br>1.2 A<br>0.5 A<br>0.26 A  |
| <b>operational current of auxiliary contacts at DC-13</b> <ul style="list-style-type: none"> <li>• at 24 V</li> <li>• at 48 V</li> <li>• at 60 V</li> <li>• at 110 V</li> <li>• at 125 V</li> <li>• at 220 V</li> <li>• at 250 V</li> </ul>   | 6 A<br>2 A<br>2 A<br>1 A<br>0.9 A<br>0.3 A<br>0.3 A   |
| <b>contact reliability of auxiliary contacts</b>  | 1 faulty switching per 100 million (17 V, 1 mA)   |
| <b>Ambient conditions</b>   |   |
| <b>ambient temperature</b> <ul style="list-style-type: none"> <li>• during operation</li> <li>• during storage</li> </ul>   | -25 ... +60 °C<br>-55 ... +80 °C  |
| <b>Safety related data</b>  |   |
| <b>product function</b> <ul style="list-style-type: none"> <li>• mirror contact according to IEC 60947-4-1</li> <li>• positively driven operation according to IEC 60947-5-1</li> </ul>   | Yes; with 3RT1<br>No  |
| <b>Installation/ mounting/ dimensions</b>   |   |
| <b>fastening method</b>   | snap-on mounting  |
| <b>height</b>   | 38 mm   |
| <b>width</b>  | 10 mm   |
| <b>depth</b>  | 51 mm   |
| <b>Connections/ Terminals</b>   |   |
| type of electrical connection for auxiliary and control circuit   | spring-loaded terminals   |
| <b>connectable conductor cross-section for auxiliary contacts</b> <ul style="list-style-type: none"> <li>• solid or stranded</li> <li>• finely stranded with core end processing</li> <li>• finely stranded without core end processing</li> </ul>  | 0.5 ... 2.5 mm <sup>2</sup><br>0.5 ... 2.5 mm <sup>2</sup><br>0.5 ... 2.5 mm <sup>2</sup>                                     |
| <b>type of connectable conductor cross-sections</b> <ul style="list-style-type: none"> <li>• for auxiliary contacts <ul style="list-style-type: none"> <li>— solid or stranded</li> <li>— finely stranded with core end processing</li> <li>— finely stranded without core end processing</li> </ul> </li> <li>• for AWG cables for auxiliary contacts</li> </ul> | 2x (0.5 ... 2.5 mm <sup>2</sup> )<br>2x (0.5 ... 1.5 mm <sup>2</sup> )<br>2x (0.5 ... 2.5 mm <sup>2</sup> )<br>2x (20 ... 14) |
| AWG number as coded connectable conductor cross section for auxiliary contacts  | 20 ... 14   |
| <b>Approvals Certificates</b>   |   |

## General Product Approval



[Confirmation](#)



[KC](#)

| General Product Approval | Functional Safety | Test Certificates | Marine / Shipping |
|--------------------------|-------------------|-------------------|-------------------|
|--------------------------|-------------------|-------------------|-------------------|



[Type Examination Certificate](#)

[Type Test Certificates/Test Report](#)

[Special Test Certificate](#)



| Marine / Shipping | other | Railway | Environment |
|-------------------|-------|---------|-------------|
|-------------------|-------|---------|-------------|



[Confirmation](#)

[Type Test Certificates/Test Report](#)

[Special Test Certificate](#)

[Environmental Confirmations](#)

## Further information

Information on the packaging

<https://support.industry.siemens.com/cs/ww/en/view/109813875>

Information- and Downloadcenter (Catalogs, Brochures,...)

<https://www.siemens.com/ic10>

Industry Mall (Online ordering system)

<https://mall.industry.siemens.com/mall/en/en/Catalog/product?mlfb=3RH1921-2CA01>

Cax online generator

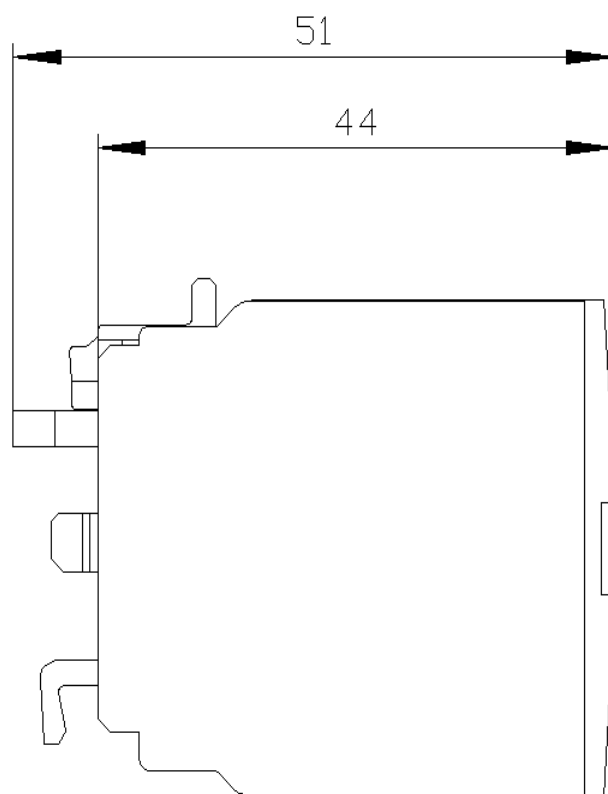
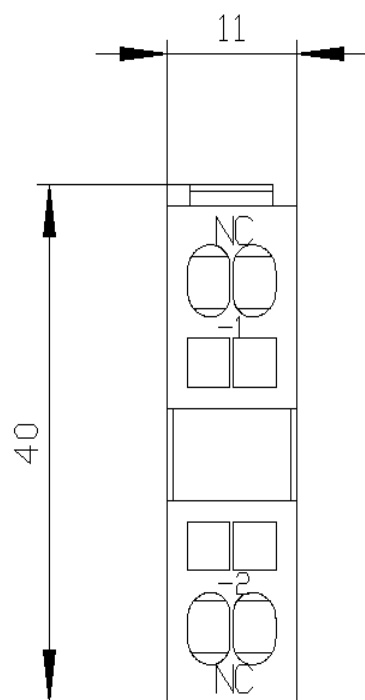
<http://support.automation.siemens.com/WW/CAXorder/default.aspx?lang=en&mlfb=3RH1921-2CA01>

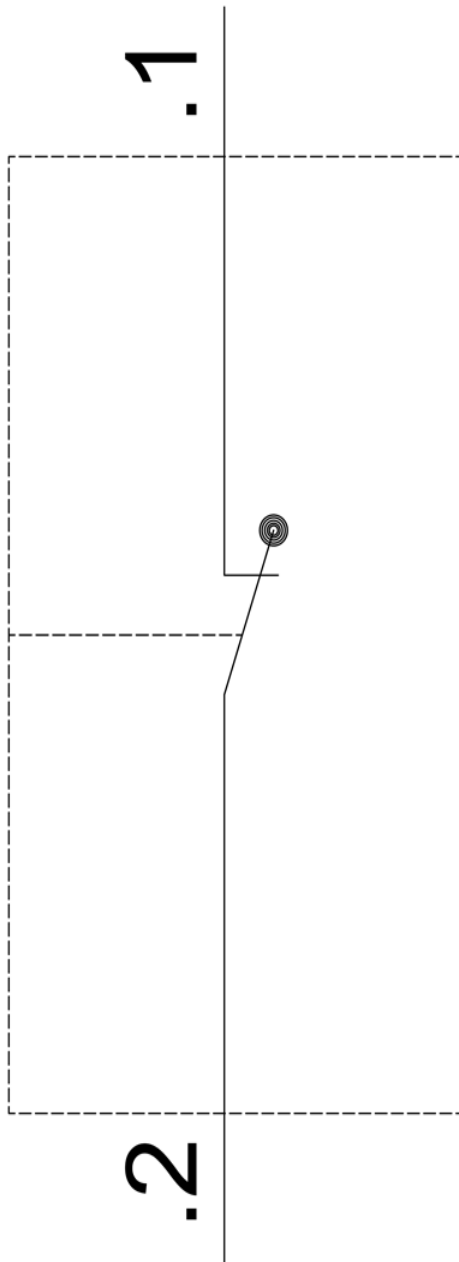
Service&Support (Manuals, Certificates, Characteristics, FAQs,...)

<https://support.industry.siemens.com/cs/ww/en/ps/3RH1921-2CA01>

Image database (product images, 2D dimension drawings, 3D models, device circuit diagrams, EPLAN macros, ...)

[http://www.automation.siemens.com/bilddb/cax\\_de.aspx?mlfb=3RH1921-2CA01&lang=en](http://www.automation.siemens.com/bilddb/cax_de.aspx?mlfb=3RH1921-2CA01&lang=en)





last modified:

11/21/2023 

# Mouser Electronics

Authorized Distributor

Click to View Pricing, Inventory, Delivery & Lifecycle Information:

[Siemens:](#)

[3RH19212CA01](#)