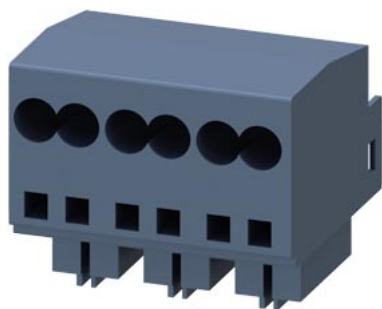


Main circuit terminals Inclusion and connection Main circuit: Spring-type terminal



| General technical data                                  |    |  |                                |
|---|----|--|--------------------------------|
| product brand name                                      |    | SIRIUS   |                                |
| product designation                                     |    | main circuit terminals (ingoing as well as outgoing)                               |                                |
| protection class IP on the front according to IEC 60529 |    | IP20   |                                |
| touch protection on the front according to IEC 60529    |    | Finger-safe, for vertical contact  |                                |
| relative humidity during operation                      | %  | 10 ... 90  |                                |
| ambient temperature                                     |    |  |                                |
| • during transport                                      | °C | -55 ... +80  |                                |
| • during storage  | °C | -55 ... +80  |                                |
| • during operation                                      | °C | -20 ... +60  |                                |
| reference code according to EN 61346-2                  |    | X  |                                |
| Installation/ mounting/ dimensions                      |    |  |                                |
| width   | mm | 45   |                                |
| height  | mm | 32   |                                |
| depth   | mm | 30   |                                |
| Connections/ Terminals                                  |    |  |                                |
| stripped length   | mm | 10   |                                |
| type of electrical connection                           |    |  |                                |
| • for main current circuit                              |    | spring-loaded terminals  |                                |
| • for auxiliary and control circuit                     |    | spring-loaded terminals  |                                |
| type of connectable conductor cross-sections            |    |  |                                |
| • for main contacts                                     |    |  |                                |
| — solid   |    | up to 12 A: 2x (1.5 ... 6 mm²), up to 32 A: 2x (2.5 ... 6 mm²)                     |                                |
| — finely stranded with core end processing              |    | up to 12 A: 2x (1.5 ... 6 mm²), up to 32 A: 2x (2.5 ... 6 mm²)                     |                                |
| • for AWG cables for main contacts                      |    | up to 12 A: 2x (16 ... 14), 2x (14 ... 10), 1x 8, up to 32 A: 2x (14 ... 10), 1x 8 |                                |
| Certificates/ approvals                                 |    |  |                                |
| certificate of suitability                              |    | IEC / EN 60947-6-2   |                                |
| General Product Approval                                |    | EMC  | Declaration of Con-<br>formity |
|   |    |  | Marine / Shipping              |

[Confirmation](#)



|                   |       |
|-------------------|-------|
| Marine / Shipping | other |
|-------------------|-------|



[Confirmation](#)

#### Further information

Siemens has decided to exit the Russian market (see here).

<https://press.siemens.com/global/en/pressrelease/siemens-wind-down-russian-business>

Siemens is working on the renewal of the current EAC certificates.

Please contact your local Siemens office on the status of validity of the EAC certification if you intend to import or offer to supply these products to an EAC relevant market (other than the sanctioned EAEU member states Russia or Belarus).

Information on the packaging

<https://support.industry.siemens.com/cs/ww/en/view/109813875>

Information- and Downloadcenter (Catalogs, Brochures,...)

<https://www.siemens.com/ic10>

Industry Mall (Online ordering system)

<https://mall.industry.siemens.com/mall/en/en/Catalog/product?mlfb=3RA6920-2A>

Cax online generator

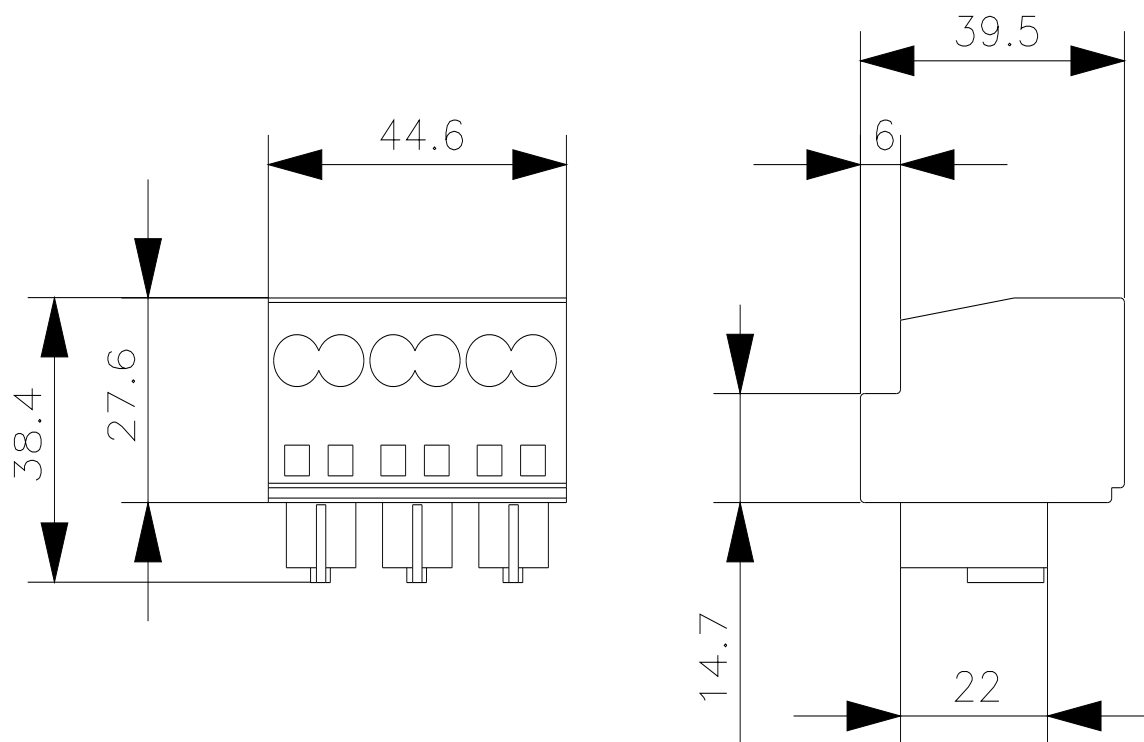
<http://support.automation.siemens.com/WW/CAXorder/default.aspx?lang=en&mlfb=3RA6920-2A>

Service&Support (Manuals, Certificates, Characteristics, FAQs,...)

<https://support.industry.siemens.com/cs/ww/en/ps/3RA6920-2A>

Image database (product images, 2D dimension drawings, 3D models, device circuit diagrams, EPLAN macros, ...)

[http://www.automation.siemens.com/bilddb/cax\\_de.aspx?mlfb=3RA6920-2A&lang=en](http://www.automation.siemens.com/bilddb/cax_de.aspx?mlfb=3RA6920-2A&lang=en)



last modified:

1/21/2021

# Mouser Electronics

Authorized Distributor

Click to View Pricing, Inventory, Delivery & Lifecycle Information:

Siemens:

3RA69202A