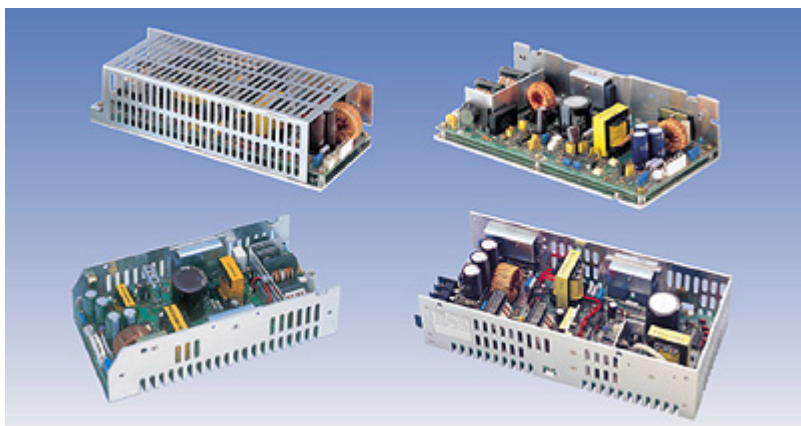


75 WATT AC-DC CONVERTER

PFC-SX SERIES



Features

1. Designed for peak load (twice rated output)
2. Power Factor Correction
3. Harmonic Current Harmonic current complies to: IEC61000-3-2, EN61000-3-2
4. Universal Input 85-264Vac
5. EMI designed to meet FCC Part 15-B Class B, EN55022 Class B, VCCI Class B
6. Safety: UL1950, CSA950(C-UL), EN60950
7. Cost effective
8. CE-marked according to LVD
9. Optional Cover

Input

Input Voltage:	AC100-230V
Input Voltage Range:	AC85-264V
Input Current:	0.7-1.2 A
Frequency:	50/60Hz
Input Frequency Range:	47-63Hz
Phase:	Single
Inrush Current: *1	20A(max.) at AC100V 40A(max.) at AC230V
Leakage Current:	1mA(maximum) at 25°C 0.75mA(maximum) at 25°C, (rated input/output and rated input frequency)
Power Factor Correction:	0.99 at 100Vac 0.95 at 230Vac

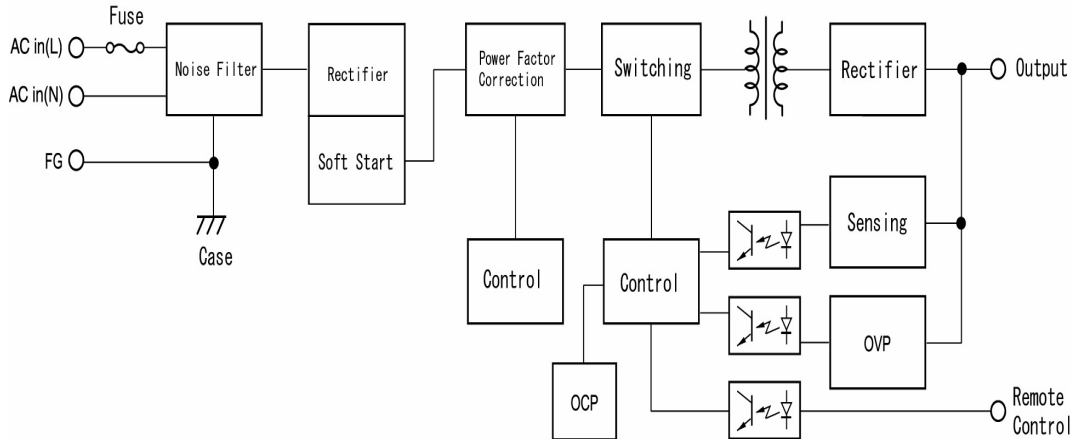


ETA-USA

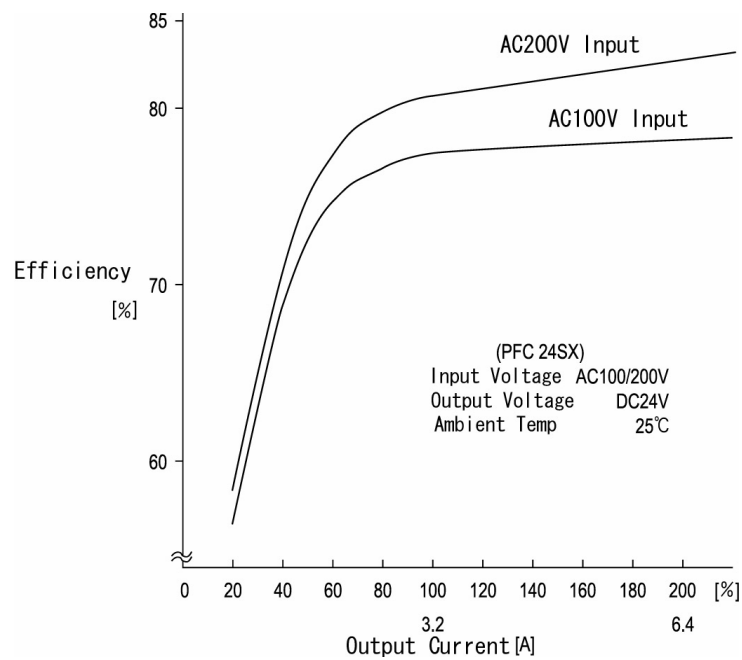
HIGH QUALITY SWITCHING POWER SUPPLIES

ETA-USA Tel: 408-778-2793 Fax: 408-779-2753 e-mail: sales@eta-usa.com

Block Diagram



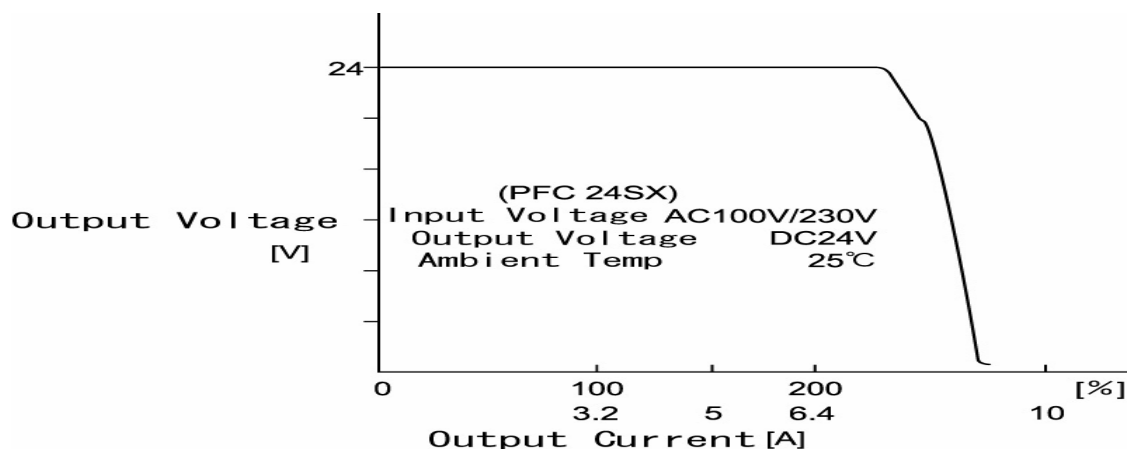
Efficiency Curve



PFC**SX Specification

Output Characteristic		Models			
	Unit	PFC12SX-U	PFC24SX-U	PFC36SX-U	PFC48SX-U
Output Voltage	Vdc	12	24	36	48
Output Current	A	6.3 / Φ 12.6	3.2 / Φ 6.4	2.1 / Φ 6.7	1.6 / Φ 3.2
Voltage Adjust Range	V	\pm 10% of Rated Output Voltage(at no load within the input range)			
Ripple & Noise(max)*3	mVpp	300	300	300	300
Rise up time	mS	600mS(maximum) at 25°C and rated input/output			
Hold up time	mS	50mS(minimum) at 25°C and rated input/output			
Regulation					
a. Line Regulation	mV	60	120	180	240
b. Load Regulation *3	mV	120	240	360	480
c. Temperature Coefficient *4	°C	0.03%/°C			
d. Drift(maximum) *5	mV	75	135	195	255
e. Dynamic Load Regulation (typ.) *6	mV	360	720	1080	1440
f. Recovery Time *6	mS	0.5mS(typical)			
Efficiency *2	%	76 / 80	79 / 82	80 / 83	80 / 83
Power Factor		0.99 Typ. AC100 [V] / 0.95 Typ. AC230 [V]			

OCP Curve



ETA-USA

HIGH QUALITY SWITCHING POWER SUPPLIES

ETA-USA Tel: 408-778-2793 Fax: 408-779-2753 e-mail: sales@eta-usa.com

Conditions:

- *1 cold start
- *2 at AC100/230V input, rated output and 25°C
- *3 measured by a bayonet probe at the output connector at a 0 to 100MHz bandwidth
- *4 at -10 to +50°C
- *5 for 7hour period after 1hour warm-up at 25°C and rated input/output
- *6 when output current changed from 50% to 150% of rated output current rapidly at rated input

Environmental Specification	
Operating Temperature	-10 to +50 °C
Operating Humidity	20 to 85%/RH(non-condensing)
Storage Temperature	-20 to +85 °C
Storage Humidity	10 to 85%/RH(non-condensing)
Withstanding Voltage	Primary-Secondary AC3,000V for 1minute Primary-Frame Ground AC2,500V for 1minute Secondary-Frame Ground AC500V for 1minute
Isolation Resistance	Primary-Secondary-Frame Ground 50MΩ (minimum) by DC500V insulation tester
Vibration	5-10Hz:10mm double amplitude,10-55Hz:19.6m/s ² ,20minutes' period for 60minutes each along X,Y,Z axes(non-operating)
Shock	296m/s ²
Cooling	Convection
Environmental Agencies	
Line Conducted Noise	Built to meet FCC Part15-B Class B Built to meet VCCI Class B Built to meet EN55022 Class B
Line Harmonic Distortion	Built to meet IEC61000-3-2
Safety	UL: UL1950, IEC950 C-UL: CSA C22.2 No.950 VDE EN60950, IEC950, VDE0805
MTBF [H]	313,000
Switching Frequency[kHz]	100(typ.)
Function/Protection	
Over current Protection	Current Limiting with automatic recovery
Over voltage Protection (≥110% of Rated Output Voltage[V])	output shutdown(to reset, leave 1minute after shut-off)
Remote Sense	not available
Remote On/Off	option
Power Fail Detection	not available
Series Operation	not available
Parallel Operation	not available
Mechanical	
Dimension [mm]	95W × 220L × 55H
Weight [g] (typical)	480g enclosed type:600g

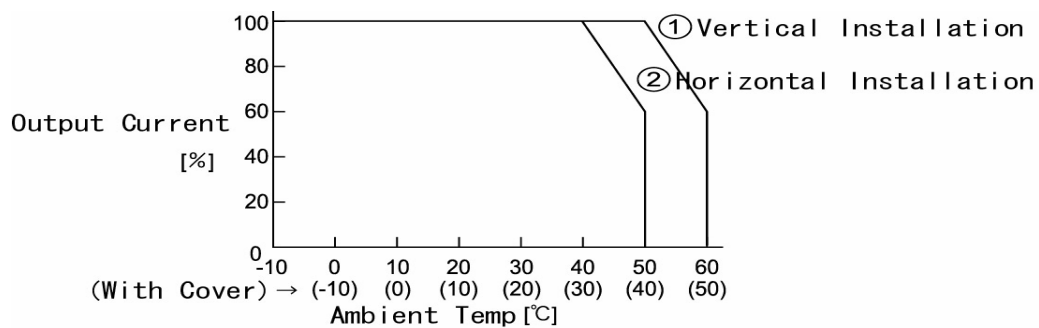
*7 safety approved at 25°C


ETA-USA

HIGH QUALITY SWITCHING POWER SUPPLIES

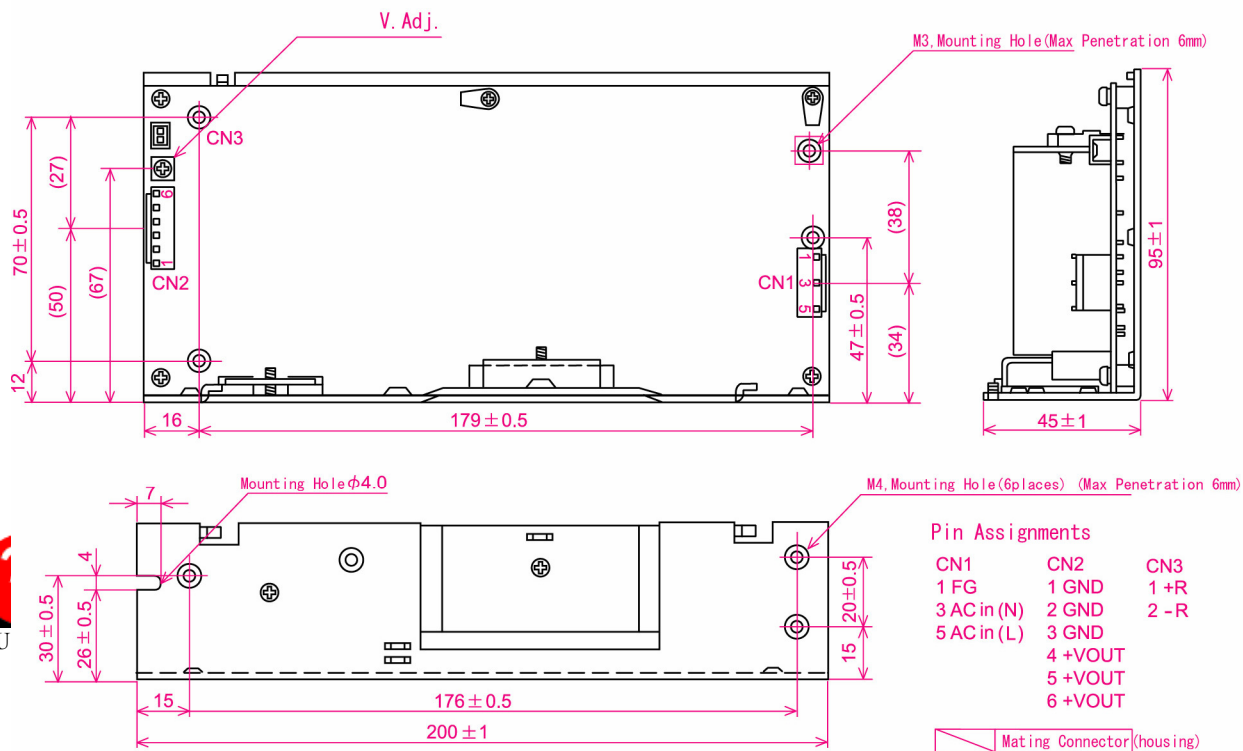
ETA-USA Tel: 408-778-2793 Fax: 408-779-2753 e-mail: sales@eta-usa.com

Derating Curve



※ For safety specification, contact ETA Sales Representative

Dimension (mm)



Mouser Electronics

Authorized Distributor

Click to View Pricing, Inventory, Delivery & Lifecycle Information:

[ETA-USA:](#)

[PFC12SX-U](#) [PFC36SX-U](#) [PFC24SX-U](#)