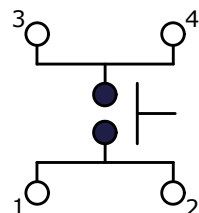


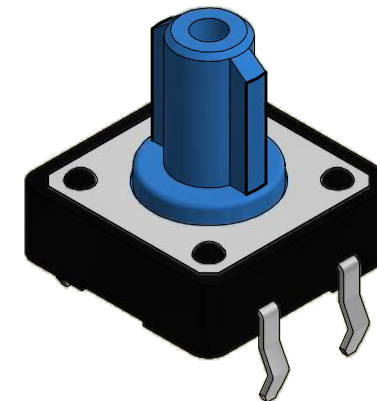
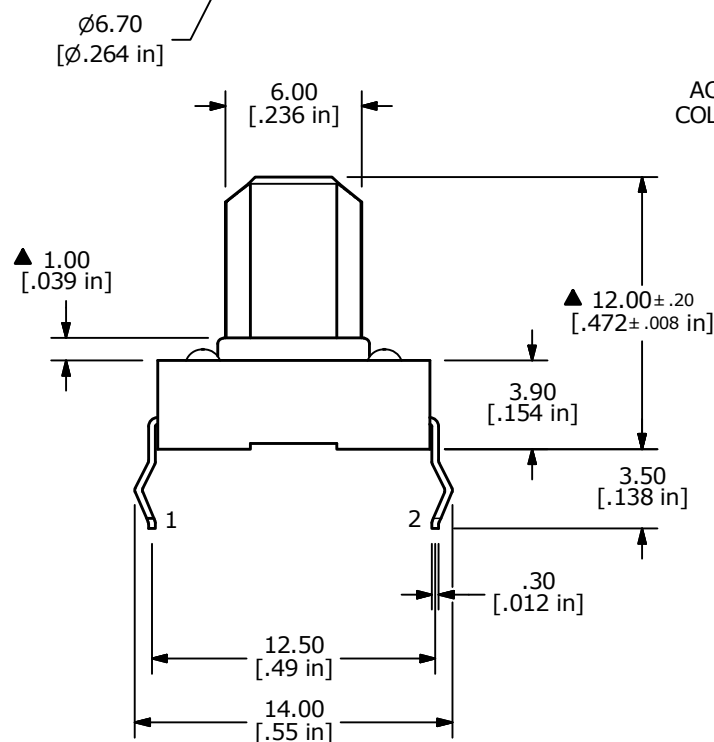
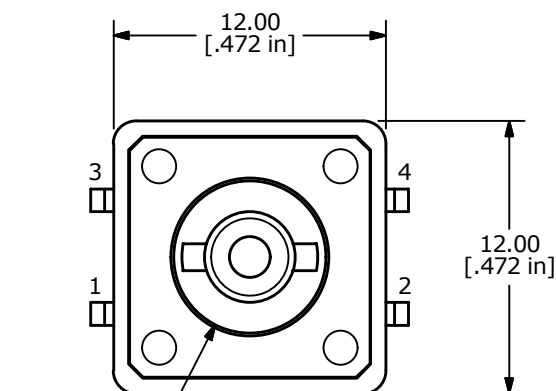
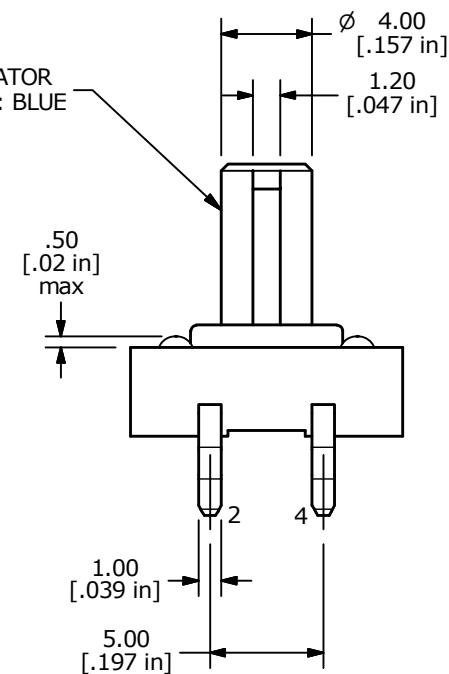
PCB MOUNTING



CIRCUIT: SPST

NOTES:

1. ALL DIMENSIONS IN MM [INCH]
2. GENERAL TOLERANCE: X.X = ± 0.4
X.XX = ± 0.25
3. TERMINAL NUMBERS FOR REF. ONLY
- ▲ 4. CONTACT RATING: 50mA @ 12VDC
5. TRAVEL: 0.30 ± 0.15 mm
6. OPERATING FORCE: 260 ± 50 mm
7. CONTACT RESISTANCE: $100\text{m}\Omega$ MAX.
8. ELECTRICAL LIFE: 100,000 CYCLES
9. ▲ DENOTES CRITICAL PARAMETER
10. 2011/65/EU (ROHS) COMPLIANT
11. CONTACT MATERIAL: SILVER
- ▲ 12. PACKAGE: 450 PIECES PER POLYBAG

ACTUATOR
COLOR: BLUE

E-SWITCH®

B	23970	UPDATE PART	7/17/19	MW
A	20888	RELEASED FOR PRODUCTION	11/21/12	EBP
REV	PCR NO	DESCRIPTION	DATE	BY

THE INFORMATION CONTAINED IN THIS DOCUMENT IS PROPRIETARY
TO E-SWITCH AND IS NOT TO BE COPIED OR TRANSFERRED

TITLE TL1100FF260QBLUSTEM

SCALE
3:1DATE
11/21/2012DR
EBPDWG
P001178REV
B

Mouser Electronics

Authorized Distributor

Click to View Pricing, Inventory, Delivery & Lifecycle Information:

E-Switch:

[TL1100FF260QBLUSTEM](#)