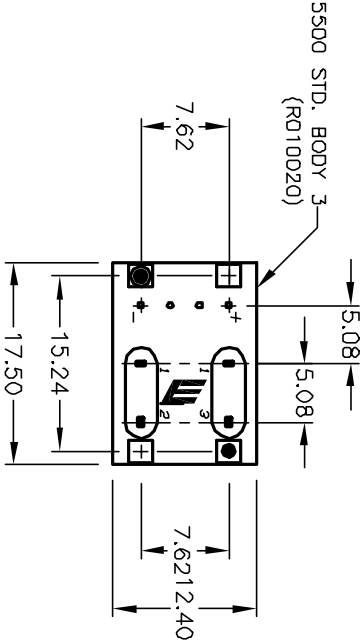
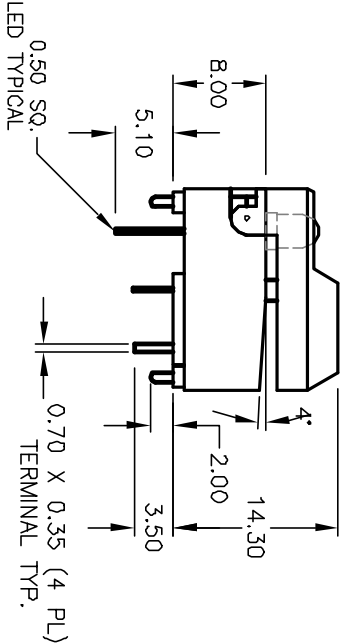


RECOMMENDED P.C.B. LAYOUT

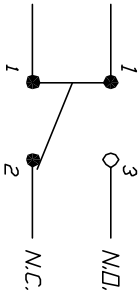


LED SPECIFICATION	SYMBOL	YEL. L.E.D.	MAX.	MIN.	TYP.	UNITS
POWER DISSIPATION	P <sub>D</sub>		100	--		mW
FORWARD VOLTAGE	V <sub>F</sub>		2.8	1.8	2.1	V
REVERSE VOLTAGE	V <sub>R</sub>		5			V
EMISSION WAVELENGTH	λ <sub>P</sub>				590	nm
AVE. FORWARD CURRENT	I <sub>AF</sub>		30	--		mA
REVERSE CURRENT	I <sub>R</sub>		100	--		μA
LUMINOUS INTENSITY	I <sub>V</sub>		5.0		12.0	mcđ

NOTES:

1. ALL DIMENSIONS IN MM
2. GENERAL TOLERANCE: X.X=±0.4  
X.XX=±0.25
3. TERM. NO. FOR REF. ONLY
4. RATING: 12mA @24V
5. FIXED CONTACT/MOVING CONTACT:  
COPPER ALLOY W/GOLD PLATE
6. CONTACT BOUNCE: <5m SEC.
7. CONTACT RESISTANCE: <50milli-ohms
8. TRAVEL: 2.5±0.2mm
9. OPERATING TEMP. RANGE: -20°C to +80°C

CIRCUIT: SPDT  
CONTACT CONFIGURATION



**E-SWITCH®**

A	12153	RELEASED FOR PRODUCTION	5/15/02	CJB					
REV.	ECN No.	DESCRIPTION	DATE	CHKD					
THE INFORMATION CONTAINED IN THIS DOCUMENT IS PROPRIETARY TO E-SWITCH AND IS NOT TO BE COPIED OR TRANSFERRED									
TITLE									
5501-M-5-3									
SCALE	DATE	DR	DWG	REV					
1.5:1	5/15/02	CJB	XR0208P	A					

# Mouser Electronics

Authorized Distributor

Click to View Pricing, Inventory, Delivery & Lifecycle Information:

[E-Switch:](#)

[5501M53](#)