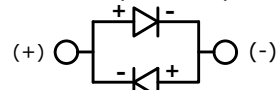


BLUE (FORWARD)



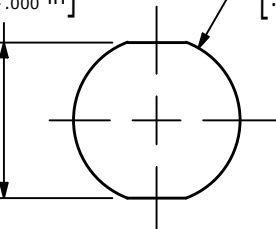
BLUE (REVERSE)

SCHEMATIC
ON-ON
DPDT ILLUMINATED

NOTE:

1. ALL DIMENSIONS IN MM [INCH]
2. GENERAL TOLERANCE: X.X = ± 0.4
X.XX = ± 0.25
3. TERMINAL NUMBERS FOR REF ONLY
- ▲ 4. CONTACT MATERIAL: SILVER
5. RATING: 3A 250 VAC cUL
6. ELECTRIC LIFE: 50,000 MAKE-AND-BREAK CYCLES AT FULL LOAD.
7. MECHANICAL LIFE: 500,000 CYCLES.
8. INSULATION RESISTANCE: 1,000 M Ω @ 500VDC MIN.
9. DIELECTRIC STRENGTH: 2,000 VAC MIN. FOR 1 MINUTE
10. CONTACT RESISTANCE: 50m Ω MAX. @ 1A 12VDC
11. OPERATING TEMP.: -20°C to 55°C
12. ▲ DENOTES CRITICAL PARAMETER.
- ▲ 13. LAMP VOLTAGE: 20mA 6V
14. TRAVEL: 3.2mm
15. ACTUATION FORCE: 3.5 \pm 1.0 N
16. MOUNTING NUT TORQUE: 5-14 Nm
17. INGRESS PROTECTION: IP67, IK08
18. HARDWARE SUPPLIED: O-RING AND HEXNUT

20.60 $^{+0.20}_{-0.00}$
[.811 $^{+0.008}_{-0.000}$ in]



PANEL CUT-OUT
PANEL THICKNESS 1-10mm

Ø25.0
[.98 in]

Ø17.75
[.70 in]

▲ L18 GRAPHIC
ILLUMINATED COLOR:
BLUE

▲ BUTTON FINISH:
SILVER



2.0
[.08 in]

▲ HOUSING
STAINLESS STEEL

M22 x 1.0
THREAD

▲ 35.0
[1.38 in]

27.2
[1.07 in]

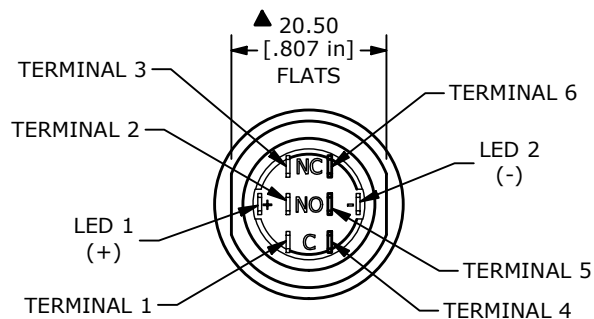
.50
[.020 in]

2.75
[.11 in]

13.00
[.51 in]

2.80
[.110 in]

5.00
[.197 in]
10.00
[.394 in]



REV	ECO NO	DESCRIPTION	DATE	BY	E-SWITCH®				OBJECT ID
A	ECO-100391	NEW RELEASE	09/27/21	MR	TITLE ULV7F2GSLL43L18				100118687
					SCALE	DATE	DR	DWG	REV
					1:1	9/23/2021	MJR	T970401	A

THE INFORMATION CONTAINED IN THIS DOCUMENT IS PROPRIETARY TO
E-SWITCH AND IS NOT TO BE COPIED OR TRANSFERRED

Mouser Electronics

Authorized Distributor

Click to View Pricing, Inventory, Delivery & Lifecycle Information:

[E-Switch:](#)

[ULV7F2GSLL43L18](#)