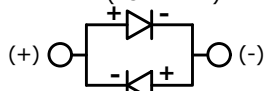


RED (FORWARD)



RED (REVERSE)

SCHEMATIC

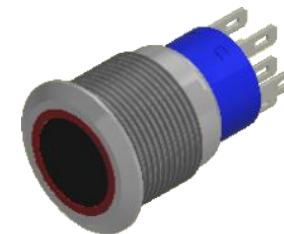
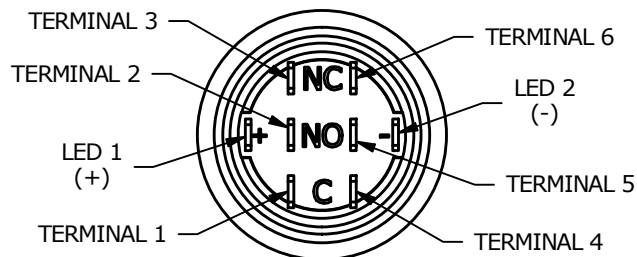
ON - (ON)

DPDT ILLUMINATED

() = MOMENTARY

NOTE:

1. ALL DIMENSIONS IN MM [INCH]
2. GENERAL TOLERANCE: X.X = ± 0.4
X.XX = ± 0.25
3. TERMINAL NUMBERS FOR REF ONLY
- ▲ 4. CONTACT MATERIAL: SILVER
5. RATING: 3A 250 VAC cUL
6. ELECTRIC LIFE: 50,000 MAKE-AND-BREAK CYCLES AT FULL LOAD.
7. MECHANICAL LIFE: 1,000,000 CYCLES.
8. INSULATION RESISTANCE: 1,000 M Ω @ 500VDC MIN.
9. DIELECTRIC STRENGTH: 2,000 VAC MIN. FOR 1 MINUTE
10. CONTACT RESISTANCE: 50m Ω MAX. @ 1A 12VDC
11. OPERATING TEMP.: -20°C to 55°C
12. ▲ DENOTES CRITICAL PARAMETER.
- ▲ 13. LAMP VOLTAGE: 20mA 24V
14. TRAVEL: 3.2mm
15. ACTUATION FORCE: 3.5 ± 1.0 N
16. MOUNTING NUT TORQUE: 5-14 Nm
17. INGRESS PROTECTION: IP67
18. HARDWARE SUPPLIED: O-RING AND HEXNUT

PANEL CUT-OUT
PANEL THICKNESS 1-10mm
 $\phi 19.00^{+0.20}_{-0.00}$
 $[\text{.748}^{+0.008}_{-0.000} \text{ in}]$
 $\phi 15.50$
 $[\text{.61 in}]$
 $\phi 22.00$
 $[\text{.87 in}]$
▲ RING ILLUMINATION
COLOR: RED▲ ACTUATOR
BLACK ANODIZED▲ HOUSING
STAINLESS STEEL2.0
[.08 in]12.6
[.49 in]M19 x 1.0
THREAD.50
[.02 in]5.50
[.22 in]13.00
[.51 in]33.3
[1.31 in]32.7
[1.29 in]17.5
[.69 in]25.50
[1.00 in]5.00
[.197 in]2.80
[.110 in]10.00
[.394 in]

| REV | ECO NO | DESCRIPTION | DATE | BY | E-SWITCH® | | | | OBJECT ID |
|-----|------------|----------------------|----------|----|--------------------|-----------|----|---------|-----------|
| B | ECO-100350 | UPDATE PANEL CUTOOUT | 12/09/21 | JS | TITLE ULV4F2HS1315 | | | | 000026090 |
| | | | | | SCALE | DATE | DR | DWG | REV |
| | | | | | 3:2 | 1/27/2017 | MW | T940090 | B |

THE INFORMATION CONTAINED IN THIS DOCUMENT IS PROPRIETARY TO
E-SWITCH AND IS NOT TO BE COPIED OR TRANSFERRED

Mouser Electronics

Authorized Distributor

Click to View Pricing, Inventory, Delivery & Lifecycle Information:

[E-Switch:](#)

[ULV4F2HS1315](#)