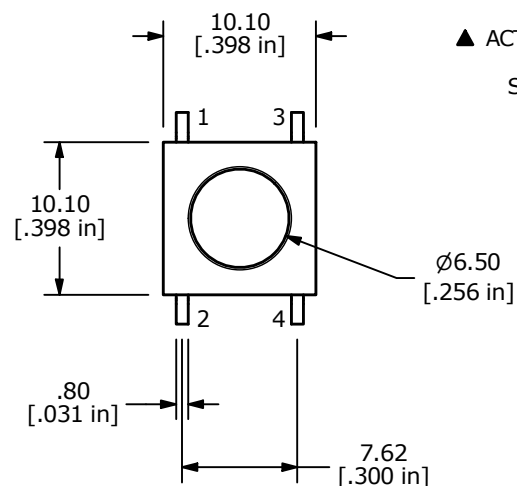
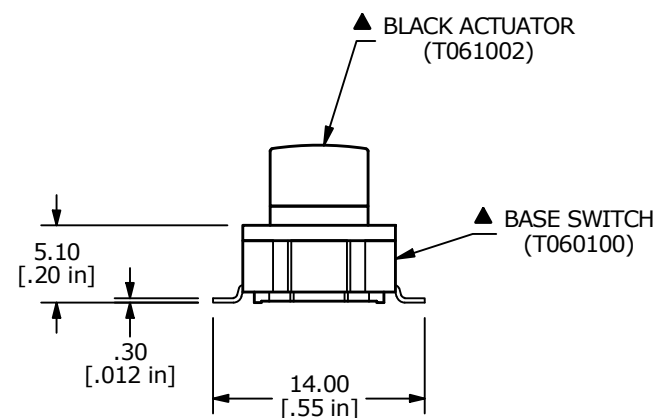
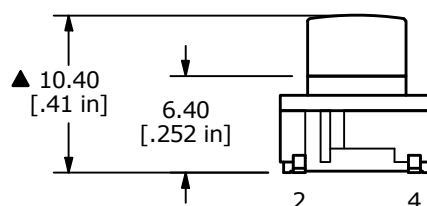
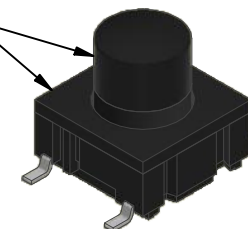


## NOTES:

1. ALL DIMENSIONS IN MM [INCH]
2. GENERAL TOLERANCE: x.x =  $\pm 0.4$   
x.xx =  $\pm 0.25$
3. TERM. NUMBERS FOR REF. ONLY
4. RATING: 50 MILLI-AMPS @24VDC
5. TRAVEL:  $1.0 \pm 0.5$ mm
6. CONTACT RESISTANCE: 30 MILLIOHMS MAX
7. INSULATION RESISTANCE: 10M OHMS MIN. AT 100VDC
8. DIELECTRIC STRENGTH: 250VAC FOR 1 MINUTE
- ▲ 9. OPERATING FORCE:  $300 \pm 75$ gf
10. PACKAGING: TAPE AND REEL, 650 PIECES PER REEL
11. LIFE CYCLES: 10,000,000 ACTUATIONS
12. ▲ DENOTES CRITICAL PARAMETER
- ▲ 13. ACTUATOR AND THE SWITCH ARE NOT TO BE SHIPPED ASSEMBLED.  
ACTUATOR IS TO SHIPPED IN BULK IN A PLASTIC BAG AND  
ASSEMBLED TO THE SWITCH AFTER SOLDERING.
14. MOISTURE PROTECTION: IP67



▲ ACTUATOR and SWITCH  
ARE TO BE  
SHIPPED SEPARATE



▲ CAP IS SHOWN ASSEMBLED FOR REFERENCE ONLY



A	24362	RELEASE	6/26/20	MW	TITLE TL6200DBF300QG			
REV	PCR NO	DESCRIPTION	DATE	BY	SCALE	DATE	DR	DWG
THE INFORMATION CONTAINED IN THIS DOCUMENT IS PROPRIETARY TO E-SWITCH AND IS NOT TO BE COPIED OR TRANSFERRED					2:1	6/26/2020	MW	T060013
					REV A			

# Mouser Electronics

Authorized Distributor

Click to View Pricing, Inventory, Delivery & Lifecycle Information:

[E-Switch:](#)

[TL6200DBF300QG](#)