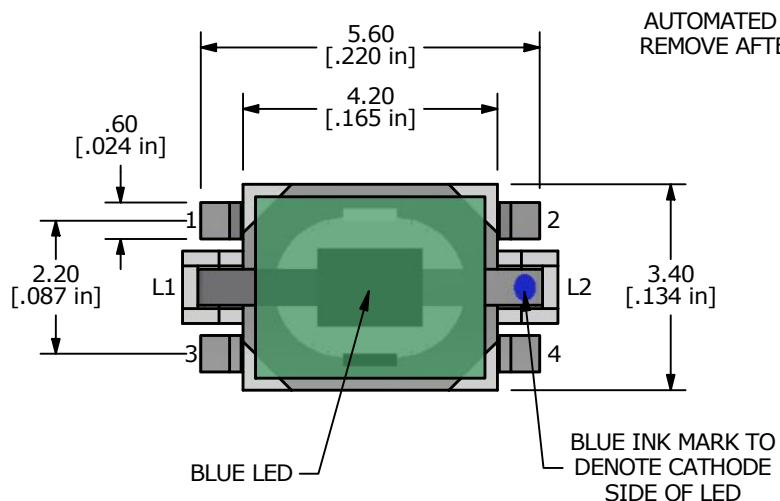
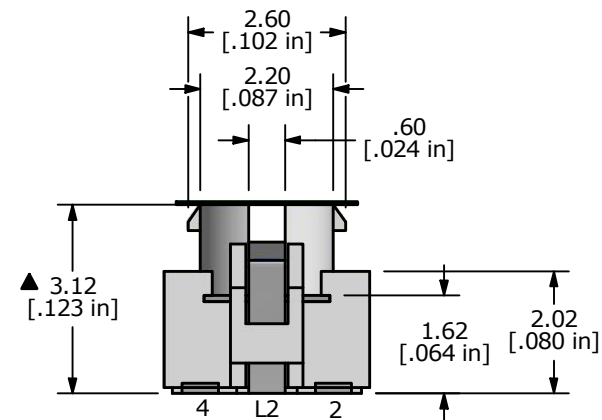
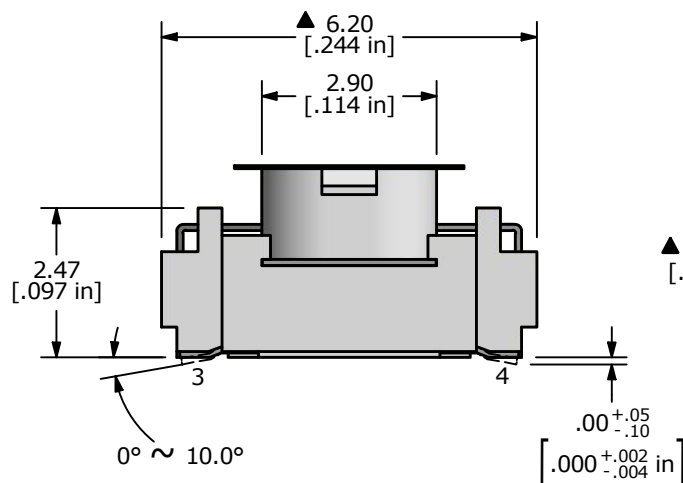
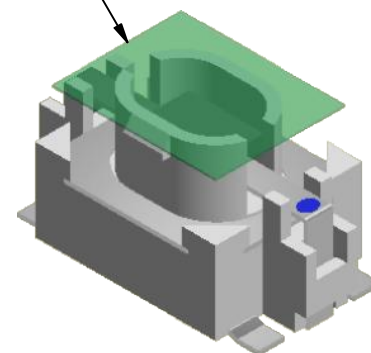


## NOTES:

1. ALL DIMENSIONS IN MM [INCH]
2. GENERAL TOLERANCE: X.X =  $\pm 0.4$   
X.XX =  $\pm 0.25$
3. RATING: 12VDC, 50mA MAX.
4. CONTACT RESISTANCE: 500m $\Omega$  MAX.
5. INSULATION RESISTANCE: 100M $\Omega$  MIN. @ 100VDC
6. TRAVEL: 0.2  $\pm$  0.1 mm
7. DIELECTRIC STRENGTH: 250V AC FOR 1 MIN.
- ▲ 8. OPERATING FORCE: 160  $\pm$  50gf
9. OPERATING TEMPERATURE: -20°C to 70°C
10. OPERATING LIFE: 100,000 CYCLES.
11. PACKAGING: TAPE & REEL, 2000 PIECES PER REEL
12. ▲ DENOTES CRITICAL PARAMETER



AUTOMATED PICKUP TAPE:  
REMOVE AFTER SOLDERING



LED SPECS	UNITS	BLUE
FORWARD CURRENT	mA	20
FORWARD VOLTAGE	V	2.8 min. - 4.0 max.
LUMINOUS INTENSITY	mcd	80 typ.

REV	ECO NO	DESCRIPTION	DATE	BY	E-SWITCH®				OBJECT ID
E	ECO-100577	moved LED color markings to top view	01/13/22	MW	TITLE TL3210AF160BQ				000006549
					SCALE	DATE	DR	DWG	REV
					8:1	10/28/2011	BMA	B200301	E

THE INFORMATION CONTAINED IN THIS DOCUMENT IS PROPRIETARY TO  
E-SWITCH AND IS NOT TO BE COPIED OR TRANSFERRED

# Mouser Electronics

Authorized Distributor

Click to View Pricing, Inventory, Delivery & Lifecycle Information:

[E-Switch:](#)

[TL3210AF160BQ](#)