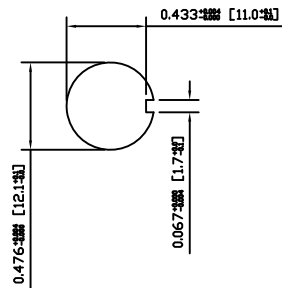
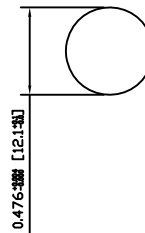


SUGGESTED PANEL CUTOUT



ALTERNATE PANEL CUTOUT



## MATERIALS

BODY:  
Phenolic, UL94 V-0

ACTUATOR:  
Nickel Plated Brass

BUSHING:  
Nickel Plated Brass

HOUSING:  
Stainless Steel

HARDWARE:  
Nickel Plated Steel

FUNCTION PLATE:  
Stainless Steel

SPACER PLATE:  
Laminate Board

SPRING:  
Steel

PLUNGER:  
Nylon

MOBILE CONTACT:  
Silver Plated Copper

MOBILE CONTACT PIVOT:  
Silver Plated Copper

CONTACTS:  
Silver Alloy Clad Copper

TERMINALS:  
Brass  
Steel

## SPECIFICATIONS

FUNCTION:  
2P2T ON-ON

RATINGS:  
ANSI/UL1054 and CAN/CSA C22.2 No.55 (E194579):  
20A 125VAC [cURus]  
15A 277VAC [cURus]  
2HP 125/277VAC [cURus]

CONTACT RESISTANCE:  
Initial: 50mΩ Max. at 50VAC

INSULATION RESISTANCE:  
800MΩ Min. at 500VDC

DIELECTRIC STRENGTH:  
1,500VAC for 1 Minute

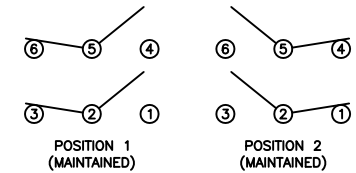
OPERATING LIFE:  
6,000 Cycles [cURus]

TEMPERATURE:  
Operating: -20°C to 85°C [cURus]

APPROVALS:



SCHEMATIC



ACTUATOR	B	10/11/16	CAB
BODY	C	11/02/14	CAB
MATERIALS	A	09/06/03	CAB
SPECIFICATIONS	A	09/06/03	CAB
REFERENCE	REV.	DATE	BY

THE INFORMATION CONTAINED IN THIS DOCUMENT IS PROPRIETARY TO E-SWITCH AND IS NOT TO BE COPIED OR TRANSFERRED

C	CORRECTED THREADING	19877	11/02/14	CAB
B	CORRECTED PANEL CUTOUT DIMENSIONS	19380	10/11/16	CAB
A	INITIAL RELEASE	PCRD0051	09/08/05	CAB
REV.	DESCRIPTION	PCR	DATE	DRAWN BY

DIMENSIONS	
INCHES [MILLIMETERS]	
GENERAL TOLERANCES	
0.000~0.236: ±0.004 [0~6: ±0.1]	
0.236~1.181: ±0.012 [6~30: ±0.3]	
1.181~4.724: ±0.020 [30~120: ±0.5]	
SCALE	DRAWING NOT TO SCALE
PROJECTION	1st Angle

E-SWITCH®		LAMB INDUSTRIES	
TITLE		ST26GD00	
ITEM NUMBER	34-ST26GD00	DATE	FEBRUARY 14, 2011
REVISION	C		

# Mouser Electronics

Authorized Distributor

Click to View Pricing, Inventory, Delivery & Lifecycle Information:

[E-Switch:](#)

[ST26GD00](#)