

MATERIALS

BODY:
Phenolic, UL94 V-0

ACTUATOR:
Nickel Plated Brass

BUSHING:
Nickel Plated Brass

HOUSING:
Stainless Steel

HARDWARE:
Nickel Plated Steel

FUNCTION PLATE:
Stainless Steel

SPACER PLATE:
Laminate Board

SPRING:
Steel

PLUNGER:
Nylon

MOBILE CONTACT:
Silver Plated Copper

MOBILE CONTACT PIVOT:
Silver Plated Copper

CONTACTS:
Silver Alloy Clad Copper

TERMINALS:
Brass
Steel

SPECIFICATIONS

FUNCTION:
2P1T OFF-(ON)

RATINGS:
ANSI/UL1054 and CAN/CSA C22.2 No.55 (E194579):
20A 125VAC [cURus]
15A 277VAC [cURus]
1.5HP 125/277VAC [cURus]

CONTACT RESISTANCE:
Initial: 50mΩ Max. at 50VAC

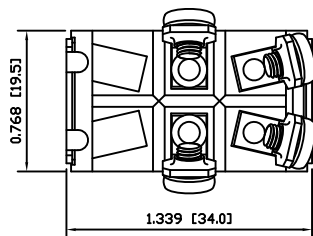
INSULATION RESISTANCE:
800MΩ Min. at 500VDC

DIELECTRIC STRENGTH:
1,500VAC for 1 Minute

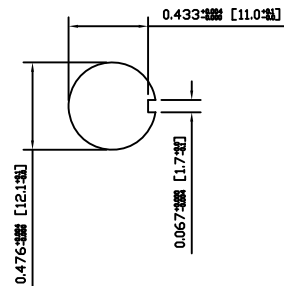
OPERATING LIFE:
6,000 Cycles [cURus]

TEMPERATURE:
Operating: -20°C to 85°C [cURus]

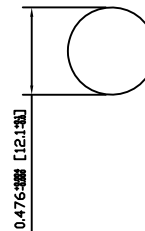
APPROVALS:



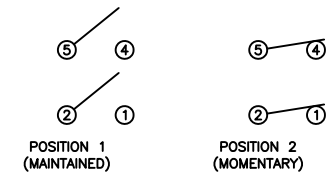
SUGGESTED PANEL CUTOUT



ALTERNATE PANEL CUTOUT



SCHEMATIC



| | | | |
|----------------|------|----------|-----|
| ACTUATOR | B | 10/11/16 | CAB |
| BODY | B | 10/11/11 | CAB |
| MATERIALS | A | 09/06/03 | CAB |
| SPECIFICATIONS | A | 09/06/03 | CAB |
| REFERENCE | REV. | DATE | BY |

THE INFORMATION CONTAINED IN THIS DOCUMENT IS PROPRIETARY TO E-SWITCH AND IS NOT TO BE COPIED OR TRANSFERRED

| | | | | |
|------|-----------------------------------|----------|----------|----------|
| C | CORRECTED PANEL CUTOUT DIMENSIONS | 19380 | 10/11/16 | CAB |
| B | CORRECTED ACTUATOR POSITION | PCRD0151 | 09/10/08 | CAB |
| A | INITIAL RELEASE | PCRD0051 | 09/08/05 | CAB |
| REV. | DESCRIPTION | PCR | DATE | DRAWN BY |

| | |
|--------------------|---|
| DIMENSIONS | INCHES [MILLIMETERS] |
| GENERAL TOLERANCES | 0.000~0.236: ±0.004 [0~6: ±0.1] 0.236~1.181: ±0.012 [6~30: ±0.3] 1.181~4.724: ±0.020 [30~120: ±0.5] |
| SCALE | DRAWING NOT TO SCALE |
| PROJECTION | 1st Angle |

| | |
|-------------|-------------------|
| E-SWITCH® | LAMB INDUSTRIES |
| TITLE | ST26ED00 |
| ITEM NUMBER | 34-ST26ED00 |
| DATE | NOVEMBER 16, 2010 |
| REVISION | C |

Mouser Electronics

Authorized Distributor

Click to View Pricing, Inventory, Delivery & Lifecycle Information:

[E-Switch:](#)

[ST26ED00](#)