

MATERIALS

BODY:
Phenolic, UL94 V-0

ACTUATOR:
Nickel Plated Brass

BUSHING:
Nickel Plated Brass

HOUSING:
Stainless Steel

HARDWARE:
Nickel Plated Steel

FUNCTION PLATE:
Stainless Steel

SPACER PLATE:
Laminate Board

SPRING:
Steel

PLUNGER:
Nylon

MOBILE CONTACT:
Silver Plated Copper

MOBILE CONTACT PIVOT:
Silver Plated Copper

CONTACTS:
Silver Alloy Clad Copper

TERMINALS:
Brass
Steel

SPECIFICATIONS

FUNCTION:
2P2T ON-OFF-ON

RATINGS:
ANSI/UL1054 and CAN/CSA C22.2 No.55 (E194579):
20A 125VAC [cURus]
15A 277VAC [cURus]
2HP 125/277VAC [cURus]

CONTACT RESISTANCE:
Initial: 50mΩ Max. at 50VAC

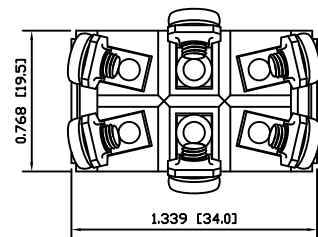
INSULATION RESISTANCE:
800MΩ Min. at 500VDC

DIELECTRIC STRENGTH:
1,500VAC for 1 Minute

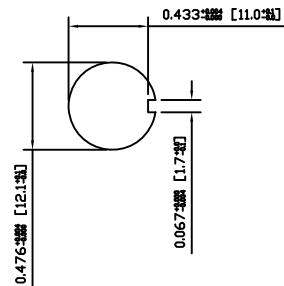
OPERATING LIFE:
6,000 Cycles [cURus]

TEMPERATURE:
Operating: -20°C to 85°C [cURus]

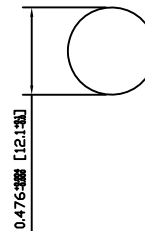
APPROVALS:



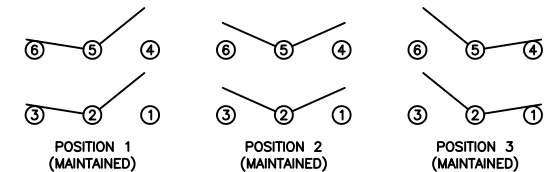
SUGGESTED PANEL CUTOUT



ALTERNATE PANEL CUTOUT



SCHEMATIC



ACTUATOR	A	10/11/16	CAB
BODY	B	10/11/11	CAB
MATERIALS	A	08/06/03	CAB
SPECIFICATIONS	A	08/06/03	CAB
REFERENCE	REV.	DATE	BY

THE INFORMATION CONTAINED IN THIS DOCUMENT IS PROPRIETARY TO E-SWITCH AND IS NOT TO BE COPIED OR TRANSFERRED

B	CORRECTED PANEL CUTOUT DIMENSIONS	19380	10/11/16	CAB
A	INITIAL RELEASE	PCRD0018	09/07/01	CAB
REV.	DESCRIPTION	PCR	DATE	DRAWN BY

DIMENSIONS	INCHES [MILLIMETERS]
GENERAL TOLERANCES	0.000~0.236: ±0.004 [0~6: ±0.1] 0.236~1.181: ±0.012 [6~30: ±0.3] 1.181~4.724: ±0.020 [30~120: ±0.5]
SCALE	DRAWING NOT TO SCALE
PROJECTION	1st Angle

E-SWITCH®	LAMB INDUSTRIES
TITLE	ST266D02
ITEM NUMBER	34-ST266D02
DATE	NOVEMBER 16, 2010
REVISION	B

Mouser Electronics

Authorized Distributor

Click to View Pricing, Inventory, Delivery & Lifecycle Information:

[E-Switch:](#)

[ST266D02](#)