

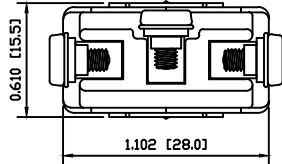
MATERIALS

- BODY:
Phenolic, UL94 V-0
- ACTUATOR:
Nickel Plated Brass
- BUSHING:
Nickel Plated Brass
- HOUSING:
Nickel Plated Steel
- HARDWARE:
Nickel Plated Brass
- SPACER PLATE:
Epoxy Board
- SPRING:
Steel
- ACTUATOR PLUNGER:
Phenolic, UL94 V-0
- MOBILE CONTACT BAR:
Silver Plated Copper
- CENTER PIVOT:
Silver Plated Copper
- CONTACTS:
Silver Alloy Clad Copper
- TERMINALS:
Brass
Steel

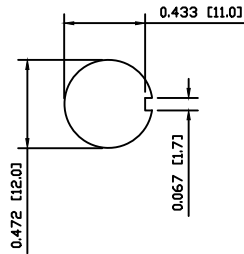
SPECIFICATIONS

- FUNCTION:
1P2T ON-OFF-ON
- RATINGS:
ANSI/UL1054 and CAN/CSA C22.2 No.55 (E194579):
20A 125VAC [cURus]
15A 277VAC [cURus]
2HP 125/277VAC [cURus]
- CONTACT RESISTANCE:
Initial: 10mΩ Max.
- INSULATION RESISTANCE:
10MΩ Min.
- DIELECTRIC STRENGTH:
1,500VAC for 1 Minute
- OPERATING LIFE:
6,000 Cycles [cURus]
- TEMPERATURE:
Operating: 0°C to 85°C [cURus]

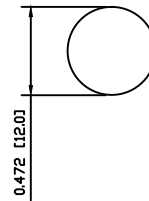
APPROVALS:



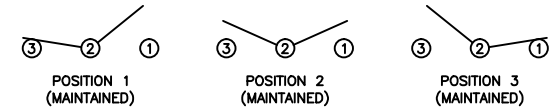
SUGGESTED PANEL CUTOUT



ALTERNATE PANEL CUTOUT



SCHEMATIC



ACTUATOR	B	10/06/10	CAB
BODY	B	10/06/10	CAB
MATERIALS	B	10/06/09	CAB
SPECIFICATIONS	B	10/06/09	CAB
REFERENCE	REV.	DATE	BY

THE INFORMATION CONTAINED IN THIS DOCUMENT IS PROPRIETARY TO E-SWITCH AND IS NOT TO BE COPIED OR TRANSFERRED.

B	CORRECTED PANEL CUTOUT, SPECIFICATIONS, AND MATERIALS	19133	10/06/10	CAB
A	INITIAL RELEASE	PCRO0051	09/08/05	CAB
REV.	DESCRIPTION	PCR	DATE	DRAWN BY

DIMENSIONS	
INCHES [MILLIMETERS]	
GENERAL TOLERANCES	
±0.008 [±0.2] / ±1°	
SCALE	PROJECTION
DRAWING NOT TO SCALE	1st Angle

		TITLE	
		ST165D00	
DRAWING NUMBER	DATE	REVISION	
34-ST165D00	JUNE 10, 2010	B	

Mouser Electronics

Authorized Distributor

Click to View Pricing, Inventory, Delivery & Lifecycle Information:

[E-Switch:](#)

[ST165D00](#)