


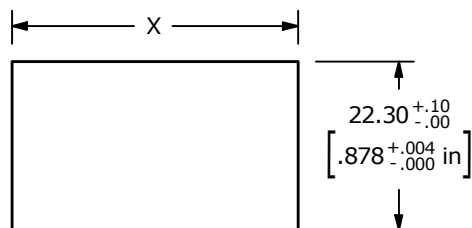


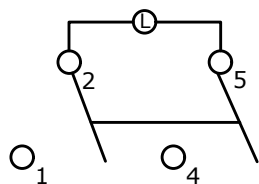
SWITCH FUNCTION ▲

POS. 1	POS. 2	POS. 3
		
OFF	N/A	ON
OPEN	N/A	2-1, 5-4



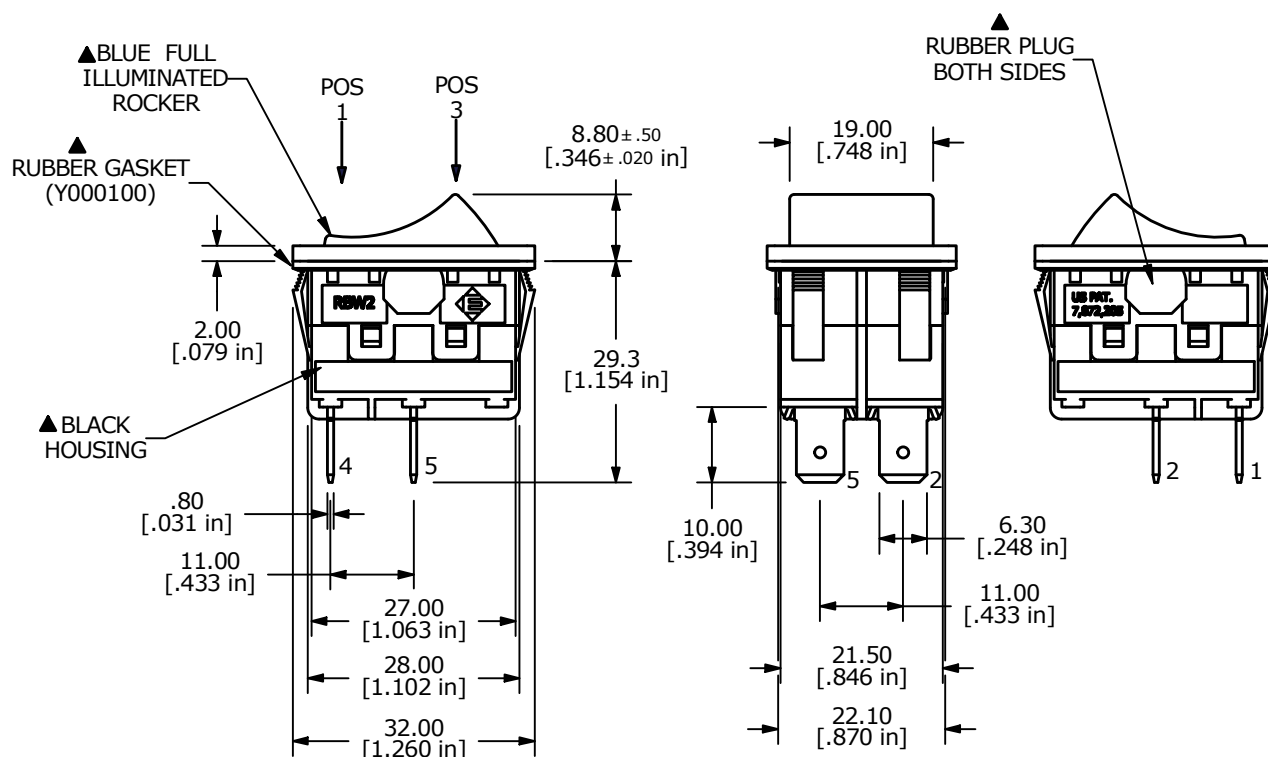
RECOMMENDED PANEL MOUNTING

PANEL THICKNESS	X
1.2-1.8	29.9/30.0
1.8-2.4	30.3/30.4
2.4-3.0	30.7/30.8

CIRCUIT: DPST
FUNCTIONS

NOTES:

- ALL DIMENSIONS IN mm [INCH]
- GENERAL TOLERANCE: X.X=±0.4
X.XX=±0.25
- TERM. NOS. FOR REF. ONLY
- MECHANICAL LIFE: 50,000 CYCLES
- CONTACT RESISTANCE: <30 MILLI-OHMS INITIAL
- DIELECTRIC STRENGTH: 1000V AC 1MIN
- ▲ DENOTES CRITICAL PARAMETER.
- INSULATION RESISTANCE: 500M OHMS AT 500VDC
- OPERATING TEMP: -20°C to 85°C
- ▲ 10. LAMP: 12VDC Incandescent
11. RATING: IP66



REV	ECO NO	DESCRIPTION	DATE	BY
C	ECO-100715	REMOVE VDE/ENEC RATING AND LOGO	02/03/22	JS



E-SWITCH®

OBJECT ID
000028980TITLE
RBW2ABLKBILEF3SCALE
1:1DATE
3/19/2012DR
MMDWG
Y100014REV
CTHE INFORMATION CONTAINED IN THIS DOCUMENT IS PROPRIETARY TO
E-SWITCH AND IS NOT TO BE COPIED OR TRANSFERRED

Mouser Electronics

Authorized Distributor

Click to View Pricing, Inventory, Delivery & Lifecycle Information:

[E-Switch:](#)

[RBW2ABLKBILEF3](#)