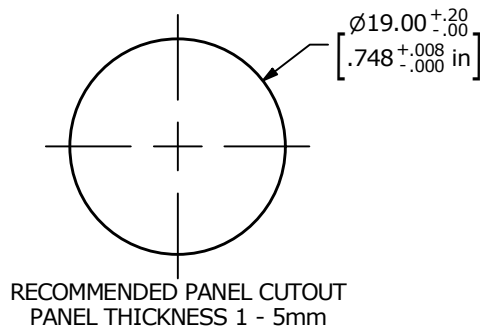


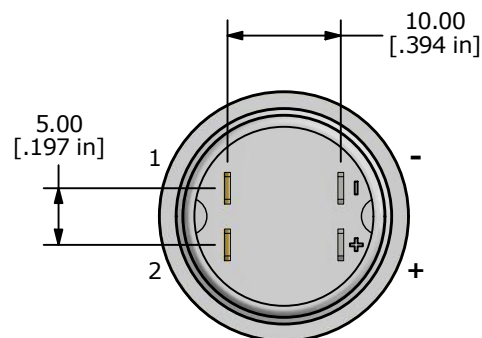
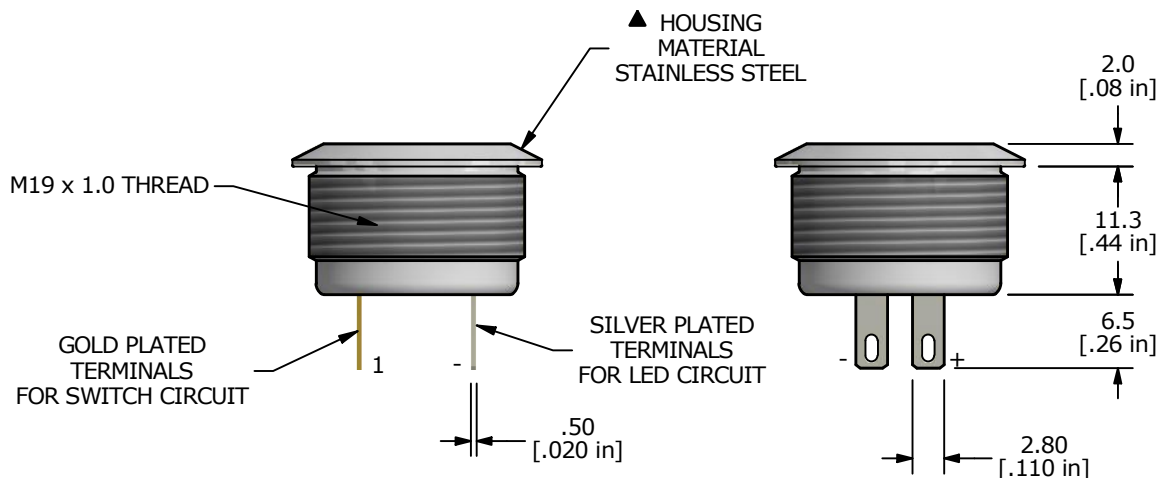
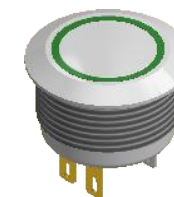
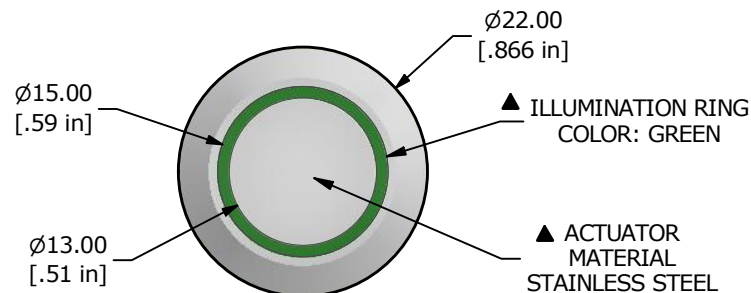
| SWITCH FUNCTION | |
|-----------------|--------|
| POS. 1 | POS. 2 |
| | |
| OFF | (ON) |
| None | 1-2 |

() = MOMENTARY



NOTE:

1. ALL DIMENSIONS IN MM [INCH]
2. GENERAL TOLERANCE: X.X = ± 0.4
X.XX = ± 0.25
3. TERMINAL NUMBERS FOR REF ONLY
4. CONTACT MATERIAL: Silver
5. RATING: 50mA 24VDC
6. ELECTRIC LIFE: 500,000 MAKE-AND-BREAK CYCLES AT FULL LOAD.
7. INSULATION RESISTANCE: 1000 M Ω MIN.
8. DIELECTRIC STRENGTH: 250 VAC MIN. FOR 1 MINUTE
9. CONTACT RESISTANCE: 100m Ω MAX.
10. OPERATING TEMP.: -25°C to +55°C
11. TRAVEL: 0.5mm
12. ▲ DENOTES CRITICAL PARAMETER.
13. INGRESS PROTECTION: IP65
- ▲14. LED VOLTAGE: 24V
15. HARDWARE SUPPLIED: O-RING AND HEXNUT



| REV | ECO NO | DESCRIPTION | DATE | BY | E-SWITCH® | | | | OBJECT ID |
|-----|------------|-------------|----------|----|--------------------|-----------------|-------|---------------------|-----------|
| A | ECO-100446 | RELEASE | 10/22/21 | JS | TITLE PVT4FS4SS335 | | | | 100119783 |
| | | | | | SCALE 3:2 | DATE 10/15/2021 | DR JS | DWG 52-PVT4FS4SS335 | REV A |

THE INFORMATION CONTAINED IN THIS DOCUMENT IS PROPRIETARY TO E-SWITCH AND IS NOT TO BE COPIED OR TRANSFERRED

Mouser Electronics

Authorized Distributor

Click to View Pricing, Inventory, Delivery & Lifecycle Information:

[E-Switch:](#)

[PVT4FS4SS335](#)