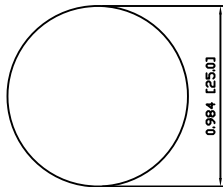
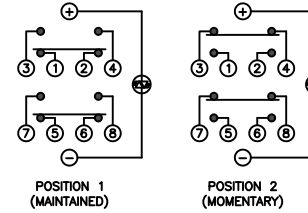


SUGGESTED PANEL CUTOUT



MAXIMUM PANEL THICKNESS: 0.394 [10.0mm]

SCHEMATIC



SPECIFICATIONS

FUNCTION:  
2PNO OFF-(ON) + 2PNC ON-(OFF)

RATING:  
2A 48VDC

ILLUMINATION VOLTAGE:  
2.8V 20mA

CONTACT RESISTANCE:  
Initial: 50mΩ Max. at 1A 12VDC

INSULATION RESISTANCE:  
1,000MΩ Min. at 500VDC

DIELECTRIC STRENGTH:  
2,000VAC Min. for 1 Minute

ELECTRICAL LIFE:  
50,000 Cycles

MECHANICAL LIFE:  
1,000,000 Cycles

TEMPERATURE:  
Operating: -20°C to 70°C

INGRESS PROTECTION:  
IP65

APPROVALS:  
**RoHS**  
COMPLIANT

MATERIALS

BUSHING:  
Stainless Steel (304)

BASE:  
Polyamide 6/6 (PA66)

ACTUATOR:  
Stainless Steel (304)  
Polycarbonate (PC)

HARDWARE:  
Nickel Plated Brass (H59)

SEALING:  
Silicone Rubber

INNER ASSEMBLY:  
Polyamide 6/6 (PA66)  
Polycarbonate (PC)  
Polycarbonate (PC)  
Brass (H59)  
Stainless Steel  
Beryllium Copper

SPRING:  
Stainless Steel

CONTACTS:  
Silver/Cadmium Oxide (AgCdO)

TERMINALS:  
Brass

O-RING:  
Silicone Rubber

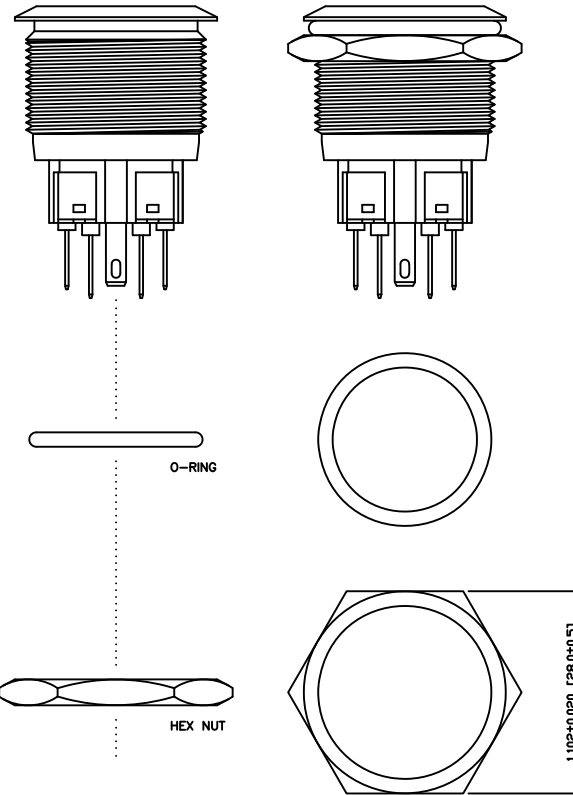
COLORS AND FINISH

BEZEL:  
Stainless Steel  
Machine Finish

ACTUATOR:  
Stainless Steel  
Machine Finish

ILLUMINATION:  
Green (Forward)  
Green (Reverse)

MARKING:  
None



EXPLODED VIEW

ASSEMBLED VIEW

|                |      |          |     |
|----------------|------|----------|-----|
| BODY           | A    | 09/07/06 | CAB |
| COLORS         | A    | 09/07/06 | CAB |
| MATERIALS      | A    | 09/07/06 | CAB |
| SPECIFICATIONS | A    | 09/07/06 | CAB |
| REFERENCE      | REV. | DATE     | BY  |

THE INFORMATION CONTAINED IN THIS DOCUMENT IS PROPRIETARY TO E-SWITCH AND IS NOT TO BE COPIED OR TRANSFERRED

|      |                 |          |          |          |
|------|-----------------|----------|----------|----------|
| A    | INITIAL RELEASE | PCRD0051 | 09/08/05 | CAB      |
| REV. | DESCRIPTION     | PCR      | DATE     | DRAWN BY |

|                    |                      |
|--------------------|----------------------|
| DIMENSIONS         | INCHES [MILLIMETERS] |
| GENERAL TOLERANCES | ±0.008 [±0.2] / ±1°  |
| SCALE              | DRAWING NOT TO SCALE |
| PROJECTION         | 1ST ANGLE            |

|                |                 |
|----------------|-----------------|
|                |                 |
| PV8F2V0SS-331  |                 |
| DRAWING NUMBER | 52-PV8F2V0SS331 |
| DATE           | AUGUST 5, 2009  |
| REVISION       | A               |

# Mouser Electronics

Authorized Distributor

Click to View Pricing, Inventory, Delivery & Lifecycle Information:

[E-Switch:](#)

[PV8F2V0SS-331](#)