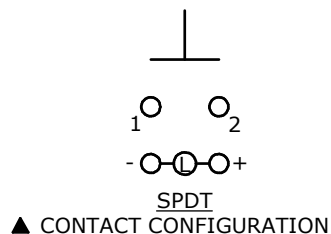
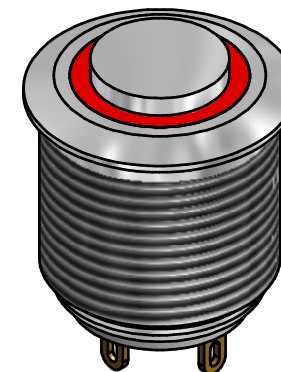
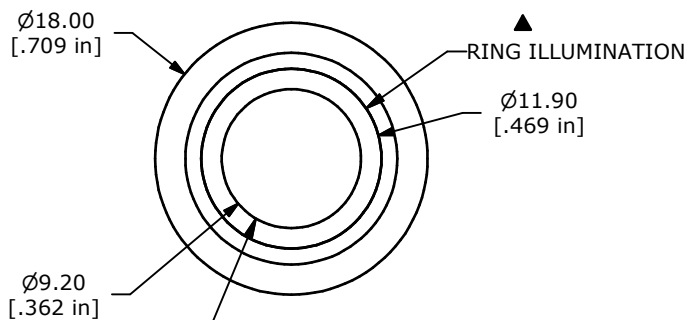


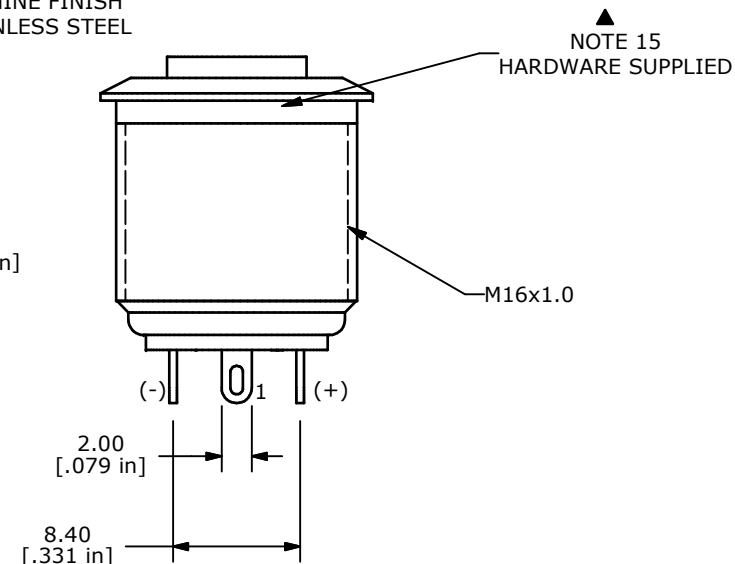
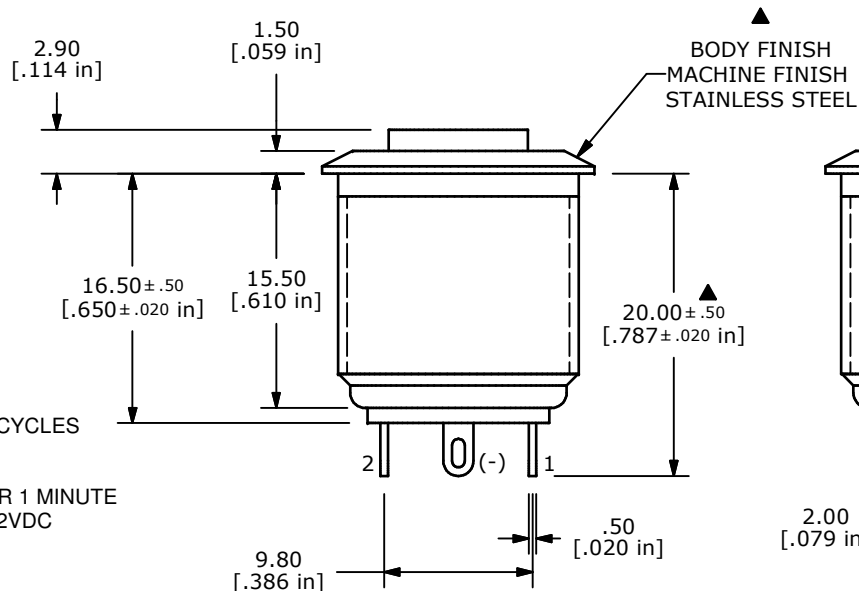
SWITCH FUNCTION	
POS. 1	POS. 2
OFF	(ON)
OPEN	1-2

(ON) = MOMENTARY



## NOTE:

- ALL DIMENSIONS IN MM [INCH]
- GENERAL TOLERANCE:  $X.X \pm 0.4$   
 $X.XX \pm 0.25$
- TERMINAL NUMBERS FOR REF ONLY
- CONTACT MATERIAL: SILVER PLATED
- RATING: 2A 48VDC
- ELECTRIC LIFE: 200,000 MAKE-AND-BREAK CYCLES AT FULL LOAD.
- INSULATION RESISTANCE: 1,000 MΩ MIN.
- DIELECTRIC STRENGTH: 2,000 VAC MIN. FOR 1 MINUTE
- CONTACT RESISTANCE: 50mΩ MAX. @ 1A 12VDC
- OPERATING TEMP.: -20°C to 55°C
- TRAVEL: 1.8mm
- ▲ DENOTES CRITICAL PARAMETER.
- ILLUMINATION COLOR: RED
- HARDWARE SUPPLIED: O-RING AND HEXNUT (NOT SHOWN)
- ILLUMINATION BASE RATING: 20mA 1.8V
- 2002/95/EC (ROHS) COMPLIANT



TITLE PV6H240SS-311

A	20902	RELEASE FOR PRODUCTION	12/3/12	EBP
REV	PCR NO	DESCRIPTION	DATE	BY

THE INFORMATION CONTAINED IN THIS DOCUMENT IS PROPRIETARY  
TO E-SWITCH AND IS NOT TO BE COPIED OR TRANSFERRED

SCALE	DATE 12/3/2012	DR EBP	DWG 52-PV6H240SS311	REV A
-------	-------------------	-----------	------------------------	----------

# Mouser Electronics

Authorized Distributor

Click to View Pricing, Inventory, Delivery & Lifecycle Information:

[E-Switch:](#)

[PV6H240SS-311](#)