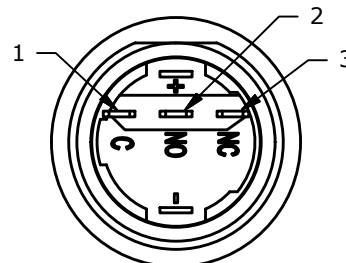
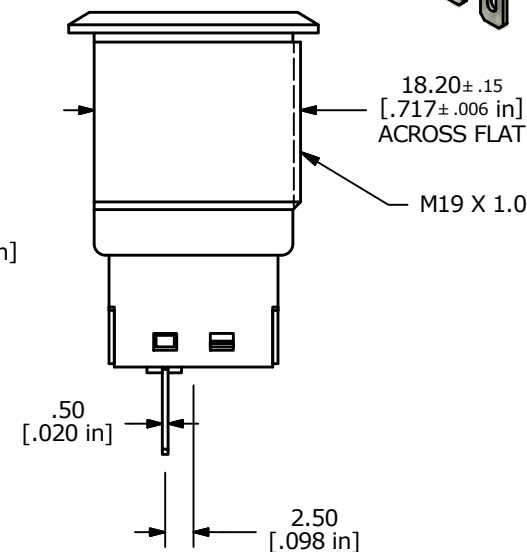
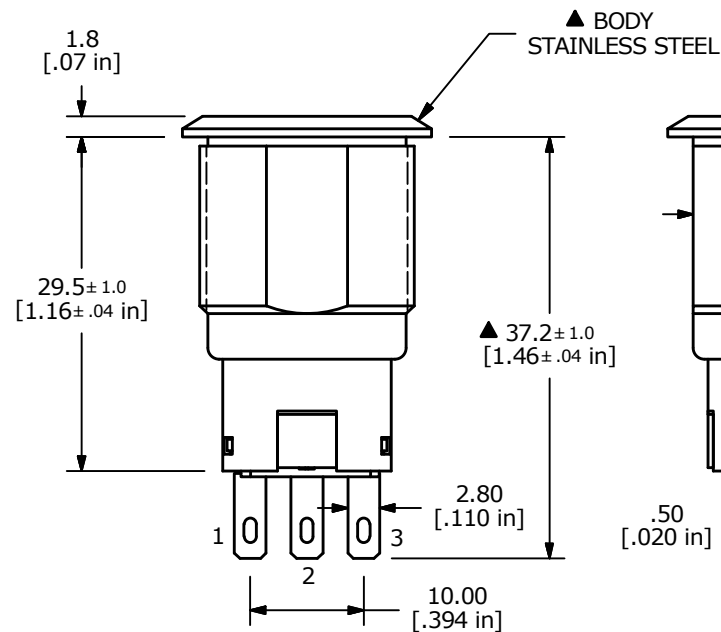
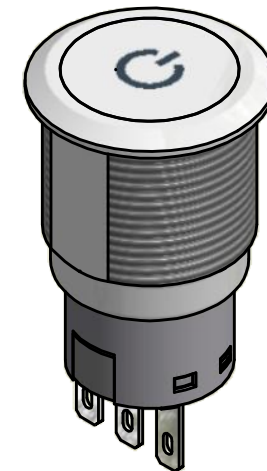
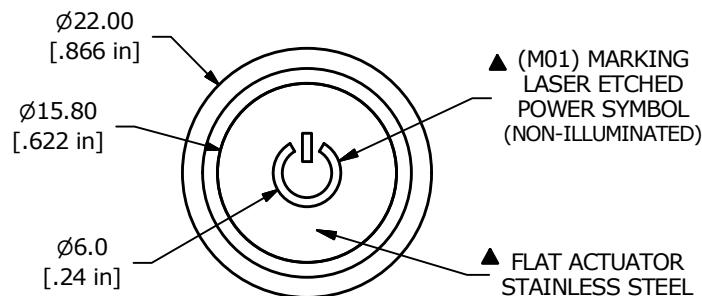
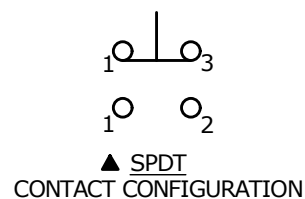


PANEL CUTOUT
MAX. PANEL THICKNESS:
11.0 [.43 in]



SWITCH FUNCTION	
POS. 1	POS. 2
ON	ON
1-3	1-2



NOTE:

- ALL DIMENSIONS IN MM [INCH]
- GENERAL TOLERANCE: X.X = ±0.4
X.XX = ±0.25
- TERMINAL NUMBERS FOR REF ONLY
- ▲ CONTACT MATERIAL: SILVER
- RATING: 2A 24VDC
- ELECTRIC LIFE: 50,000 MAKE-AND-BREAK CYCLES AT FULL LOAD.
- INSULATION RESISTANCE: 1,000 MΩ MIN.
- DIELECTRIC STRENGTH: 2,000 VAC MIN. FOR 1 MINUTE
- CONTACT RESISTANCE: 50mΩ MAX. @ 1A 12VDC
- OPERATING TEMP.: -20°C to 55°C
- ▲ TRAVEL: 2.8mm
- ▲ DENOTES CRITICAL PARAMETER
- ▲ LAMP VOLTAGE: NO LAMP
- INGRESS PROTECTION: IP67
- ▲ HARDWARE SUPPLIED: O-RING AND HEXNUT



A	22452	RELEASE FOR PRODUCTION	8/19/16	MW
REV	PCR NO	DESCRIPTION	DATE	BY

THE INFORMATION CONTAINED IN THIS DOCUMENT IS PROPRIETARY
TO E-SWITCH AND IS NOT TO BE COPIED OR TRANSFERRED

TITLE PV4F230SS-M01

SCALE 3:2	DATE 8/19/2016	DR MW	DWG 52-PV4F230SSM01	REV A
--------------	-------------------	----------	------------------------	----------

Mouser Electronics

Authorized Distributor

Click to View Pricing, Inventory, Delivery & Lifecycle Information:

[E-Switch:](#)

[PV4F230SS-M01](#)