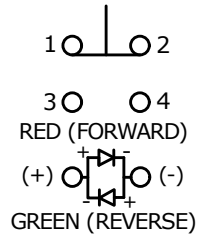


RECOMMENDED PANEL CUT OUT THICKNESS

▲ SWITCH FUNCTION

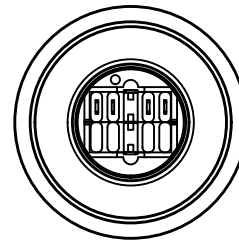
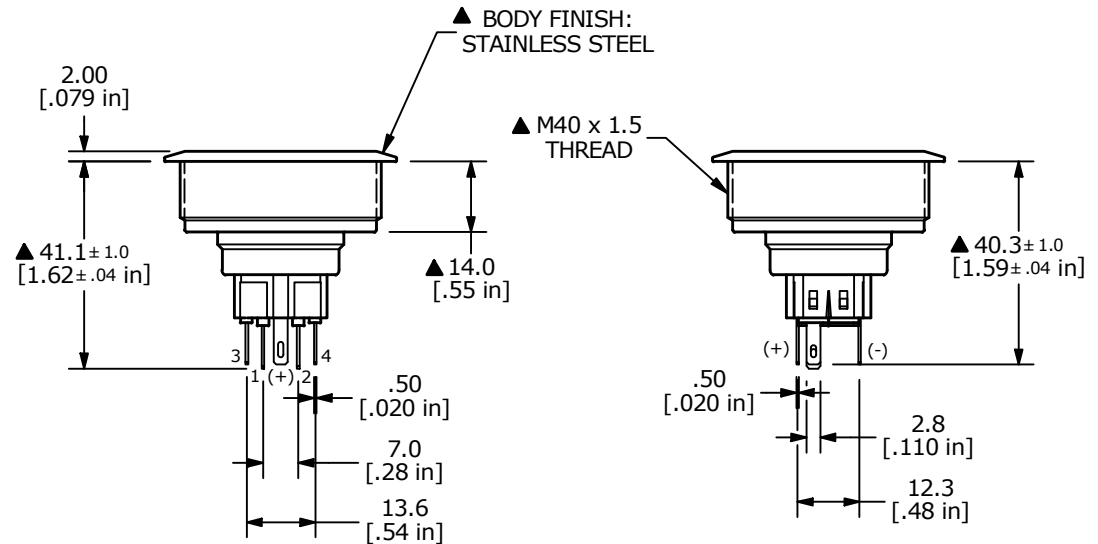
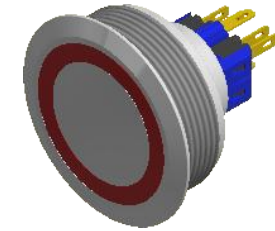
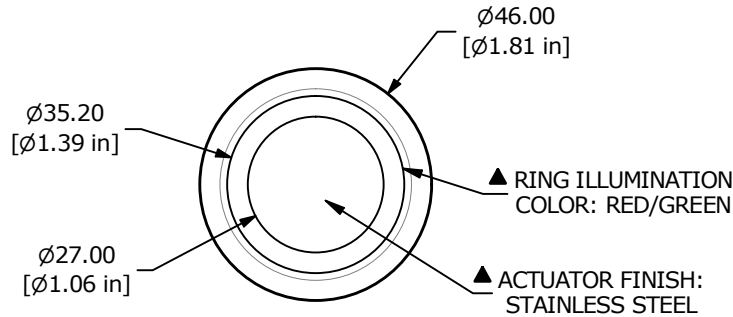
POS. 1	POS. 2
1-2 ON 3-4 OFF	1-2 OFF 3-4 ON



▲ SPDT ON-OFF / OFF-ON  
 CONTACT CONFIGURATION

## NOTE:

- ALL DIMENSIONS IN MM [INCH]
- GENERAL TOLERANCE: X.X =  $\pm 0.4$   
X.XX =  $\pm 0.25$
- TERMINAL NUMBERS FOR REF. ONLY
- RATING: 2A @ 48VDC
- CONTACT RESISTANCE: 50m $\Omega$  MAX. @ 1A 12VDC
- INSULATION RESISTANCE: 1,000M $\Omega$  @ 500VDC
- DIELECTRIC STRENGTH: 2,000VAC MIN. FOR 1 MINUTE
- ELECTRICAL LIFE: 50,000 CYCLES
- OPERATING TEMPERATURE: -20°C to 55°C
- INGRESS PROTECTION: IP65
- ▲ 11. SUPPLIED HARDWARE: O-RING AND HEXNUT
- ▲ 12. ▲ DENOTES CRITICAL PARAMETER
- ▲ 13. BASE ILLUMINATION RATING: RED 20mA 1.8V  
GREEN 20mA 2.8V



REV	ECO NO	DESCRIPTION	DATE	BY					OBJECT ID
A	ECO-101816	RELEASE	04/14/23	JS	TITLE PV10F2T0SS-3G1				100124145
					SCALE	DATE	DR	DWG	REV
					2:3	4/10/2023	JS	52-PV10F2T0SS3G1	A

THE INFORMATION CONTAINED IN THIS DOCUMENT IS PROPRIETARY TO E-SWITCH AND IS NOT TO BE COPIED OR TRANSFERRED

# Mouser Electronics

Authorized Distributor

Click to View Pricing, Inventory, Delivery & Lifecycle Information:

[E-Switch:](#)

[PV10F2T0SS-3G1](#)