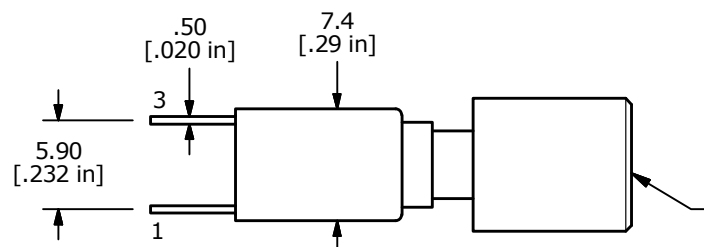
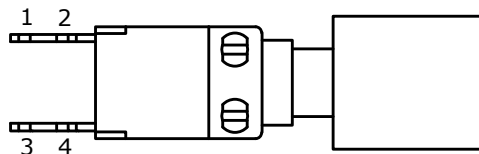
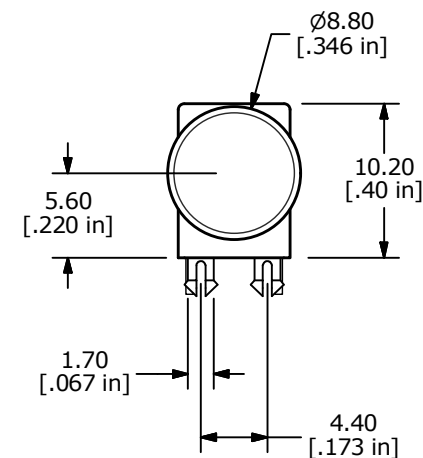
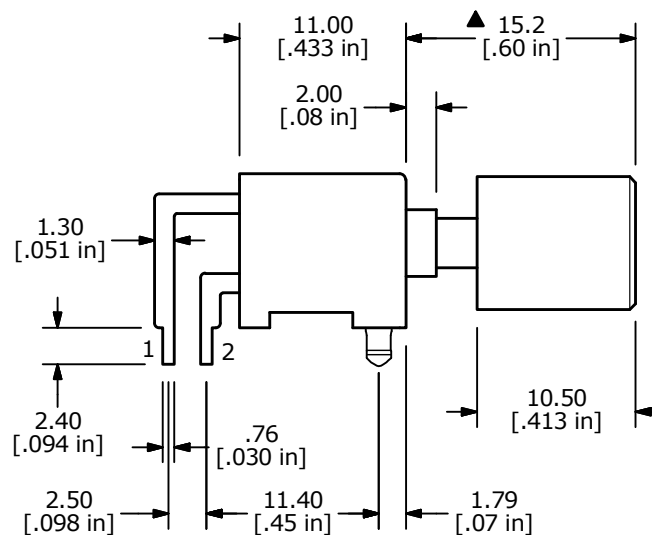
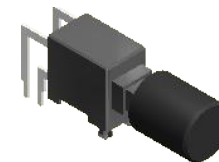


## NOTES:

1. ALL DIMENSIONS IN MM [INCH]
2. GENERAL TOLERANCE: x.x =  $\pm 0.4\text{mm}$   
x.xx =  $\pm 0.25\text{mm}$
3. RATING: 3A 30VDC
4. TERMINALS: COPPER, SILVER PLATED
- ▲ 5. TRAVEL: LATCHING:  $2.2 \pm .3\text{mm}$   
FULL TRAVEL:  $3.2 \pm .3\text{mm}$   
SWITCH to MAKE:  $1.8 \pm .3\text{mm}$
6. FUNCTION: OFF-ON (LATCHING)
7. ELECTRICAL LIFE: 6,000 CYCLES
8. OPERATING TEMPERATURE:  $-5^{\circ}\text{C}$  to  $60^{\circ}\text{C}$
9. CONTACT RESISTANCE:  $30\text{m}\Omega$  MAX.
10. INSULATION RESISTANCE:  $500\text{M}\Omega$  MIN@ 500V
11. ▲ DENOTES CRITICAL PARAMETER.
12. 2011/65/EU (RoHS) COMPLIANT
- ▲ 13. CAPS ARE TO COME IN BULK IN A PLASTIC BAG



▲ CAP COLOR: BLACK  
(SHOWN WITH CAP)  
(CAPS DO NOT COME  
ASSEMBLED TO THE SWITCH)



E-SWITCH®

TITLE PB400EEQR1BLK

SCALE  
2:1DATE  
11/10/2017DR  
MWDWG  
T004000REV  
A

THE INFORMATION CONTAINED IN THIS DOCUMENT IS PROPRIETARY  
TO E-SWITCH AND IS NOT TO BE COPIED OR TRANSFERRED

A	23055	New Release	11/10/17	MW
REV	PCR NO	DESCRIPTION	DATE	BY

# Mouser Electronics

Authorized Distributor

Click to View Pricing, Inventory, Delivery & Lifecycle Information:

[E-Switch:](#)

[PB400EEQR1BLK](#)