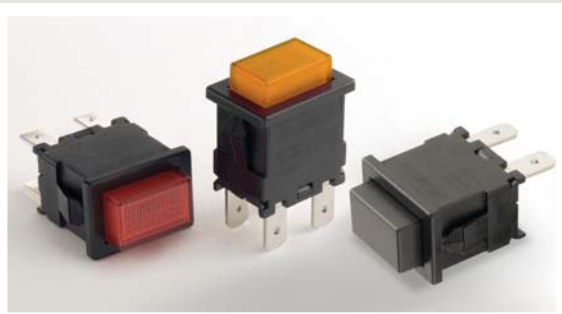




E-SWITCH®

# SERIES PB 1973 SWITCHES

## PUSHBUTTON SWITCHES - ILLUMINATED PANEL MOUNT



### SPECIFICATIONS

Contact Rating: 15A @ 250 VAC UL listed

Life Expectancy (Mechanical): ≥30,000 cycles

Life Expectancy (Electrical): ≥10,000 cycles

Contact Resistance: &lt; 20mΩ

Insulation Resistance: 1,000MΩ min.

Dielectric Strength: &gt; 1,500 volts

Operating Temperature: -10°C to +55°C

### FEATURES & BENEFITS

- ▶ Panel Mount
- ▶ Illuminated
- ▶ Many color options available

### APPLICATIONS/MARKETS

- ▶ Telecommunications
- ▶ Networking
- ▶ Computers/servers
- ▶ Performance audio
- ▶ Instrumentation
- ▶ Low power on/off designs
- ▶ External hard drives and modems

### HOW TO ORDER

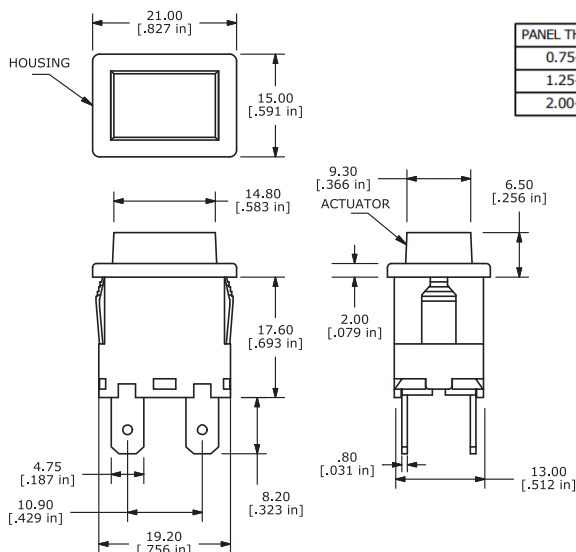
| SERIES<br>PB | MODEL NO.<br>[ ][ ][ ][ ] | CIRCUIT<br>[ ]   | HOUSING<br>COLOR<br>[ ][ ][ ] | ACTUATOR<br>COLOR<br>[ ][ ][ ]   | MARKING<br>[ ] | TERMINATION<br>[ ]     | LED<br>COLOR<br>[ ]   |
|--------------|---------------------------|--|-------------------------------|--|----------------|------------------------|---|
|              | 1973                      | A = SPST ON-OFF<br>B = SPST (ON)-OFF<br>C = SPST (ill) ON-OFF<br>D = SPST (ill) (ON)-OFF<br>E = DPST ON-OFF<br>F = DPST (ON)-OFF<br>G = DPST (ill) ON-OFF<br>H = DPST (ill) (ON)-OFF | BLK = Black<br>WHT = White    | BLK = Black (Opaque)<br>WHT = White (Opaque)<br>GIL = Green Illuminated<br>RIL = Red Illuminated<br>YIL = Yellow Illuminated | E = No Marking | F = .187 x .032 Faston | 0 = No Lamp<br>1 = 125 VAC Neon<br>2 = 250 VAC Neon<br>3 = 12 VDC Incandescent<br>4 = 24 VDC Incandescent |

### Example Ordering Number

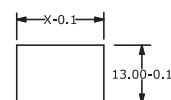
PB-1973-B-BLK-RIL-E-F-2

Specifications subject to change without notice.11.16.2021

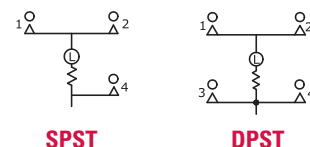
### PB 1973



| PANEL THICKNESS | X           |
|-----------------|-------------|
| 0.75-1.25       | 19.1 - 19.2 |
| 1.25-2.00       | 19.3 - 19.4 |
| 2.00-3.00       | 19.5 - 19.6 |



### PANEL MOUNTING



### SCHEMATIC

TACT  
SWITCHESNAVIGATION  
SWITCHESPUSHBUTTON  
SWITCHESTOGGLE  
SWITCHESROCKER  
SWITCHESSLIDE  
SWITCHESSNAP-ACTION  
SWITCHESDIP  
SWITCHESKEYLOCK  
SWITCHESROTARY  
SWITCHESDETECTOR  
SWITCHESCAP  
OPTIONS

# Mouser Electronics

Authorized Distributor

Click to View Pricing, Inventory, Delivery & Lifecycle Information:

E-Switch:

[PB1973ABLKBLKEF0GOLDCONT](#) [PB1973EBLKCUSTBLKEFO](#) [PB1973EBLKSPECIALGRAYEFO](#)