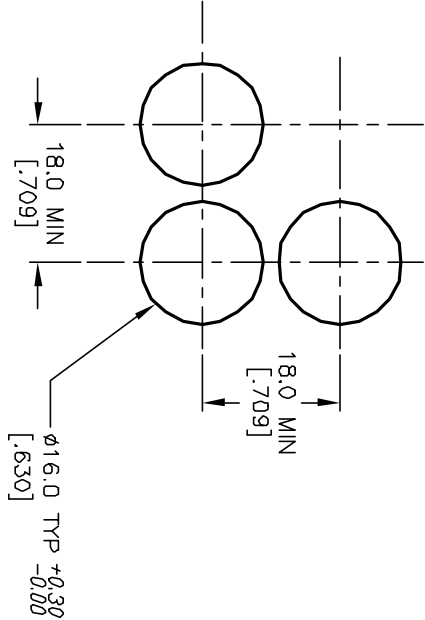
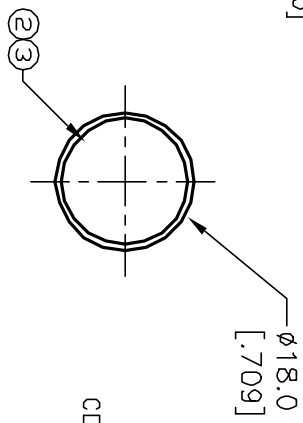


PARTS LIST			
ITEM	QTY.	PART NO.	PART DESCRIPTION
1	1	F040015	P16 EE R11
2	1	F050418	50-004-18
3	1	F052105	50-001-05 (WHT LENS TRANSPARENT



RECOMMEND PANEL MOUNTING

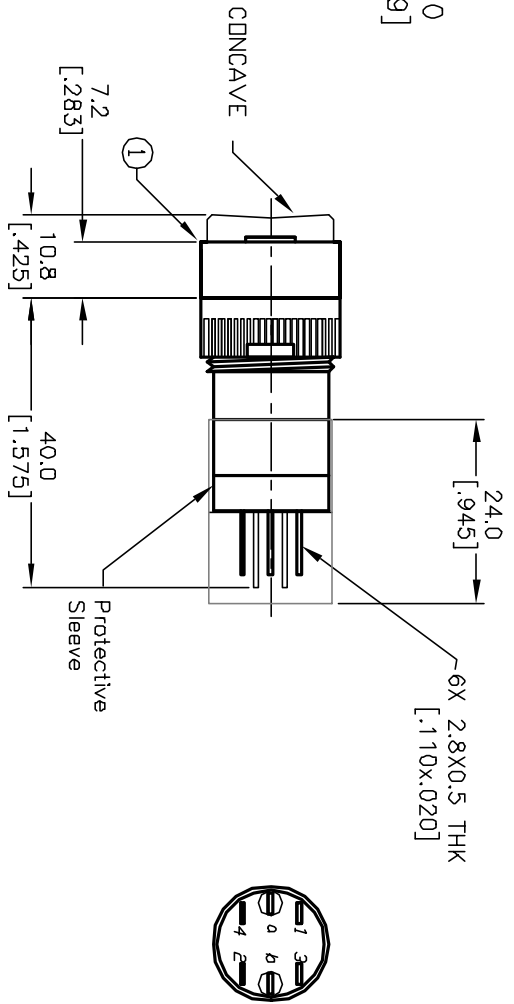


10 10 2  
30 0 4  
a-L-b (+)

CONTACT CONFIGURATION

NOTES:

1. ALL DIMENSIONS IN MM [INCH]
2. GENERAL TOLERANCE: X.X=±0.4 X.XX=±0.25
3. TERM. NOS. FOR REFERENCE ONLY.
4. RATING: 5A @250V AC;  
8A @125V AC
5. MECHANICAL LIFETIME: >2 MILLION OPERATIONS
6. TRAVEL: 3.0MM
7. CONTACT MATERIAL: COPPER ALLOY W/SILVER PLATING
8. LAMP VOLTAGE: 6V DC



TITLE			
P16 EE R11 H YEL WHT (LATCHING) TRANSPARENT/CONCAVE LENS			
E-SWITCH®			
REV.	ECN No.	RELEASED FOR PRODUCTION	1/02/03
THE INFORMATION CONTAINED IN THIS DOCUMENT IS PROPRIETARY TO E-SWITCH AND IS NOT TO BE COPIED OR TRANSFERRED		DATE	CHKD
SCALE	1.5:1	DATE	1/02/03
DR	CB	DWG	XF0532P
REV	A		

# Mouser Electronics

Authorized Distributor

Click to View Pricing, Inventory, Delivery & Lifecycle Information:

[E-Switch:](#)

[P16EER11HYELWHT](#)