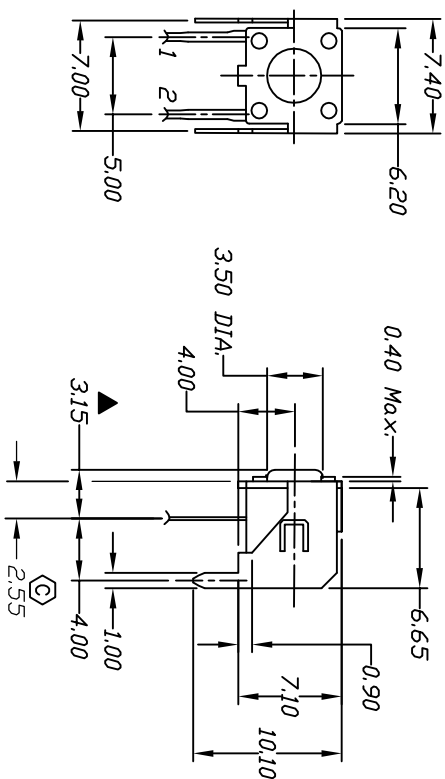


CIRCUIT: SPST

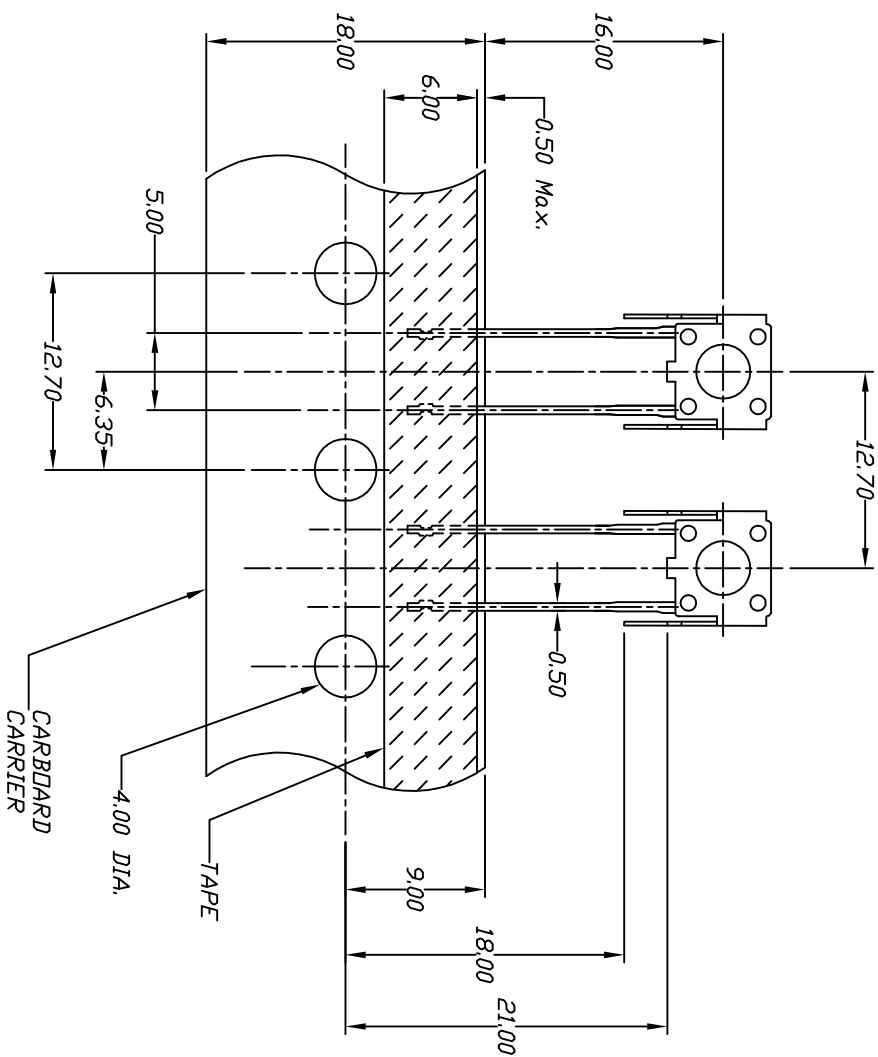
CONTACT CONFIGURATION

RECOMMEND P.C.B. LAYOUT



NOTES:

1. ALL DIMENSIONS IN MM
2. GENERAL TOLERANCE: 0.0 ± 0.4
 0.00 ± 0.25
3. TERM. NOS. FOR REF. ONLY
4. CONTACT RATING: 50mA, @12VDC
5. OPERATING FORCE: $100 \pm 50gf$
6. TRAVEL: $0.25 + 0.2 / - 0.1mm$
7. CONTACT RESISTANCE: 100 milliohms Max.
8. CARRIER IS FOLDED EVERY 25 PITCHES
(24 SWITCHES PER FOLD)
9. 700 SWITCHES PER BOX
10. DESIGNATE MAJOR DIMENSIONS
11. 2002/95/EC (ROHS) COMPLIANT



C	18905	ADD DIM TO TERMINAL	2/23/10	BLR
B	13210	NOTE 9 WAS 1000	6/13/03	AR
A	12352	WAS 2000495	8/6/02	CB
REV.	ECN No.	DESCRIPTION	DATE	CHKD
THE INFORMATION CONTAINED IN THIS DOCUMENT IS PROPRIETARY TO E-SWITCH AND IS NOT TO BE COPIED OR TRANSFERRED				
TITLE				
TL58 WF100 (Actuator = 315mm)				
SCALE				
2:1				
DATE				
2/23/10				
DR				
BLR				
DWG				
P010610				
REV				
C				

Mouser Electronics

Authorized Distributor

Click to View Pricing, Inventory, Delivery & Lifecycle Information:

[E-Switch:](#)

[TL58WF100Q](#)