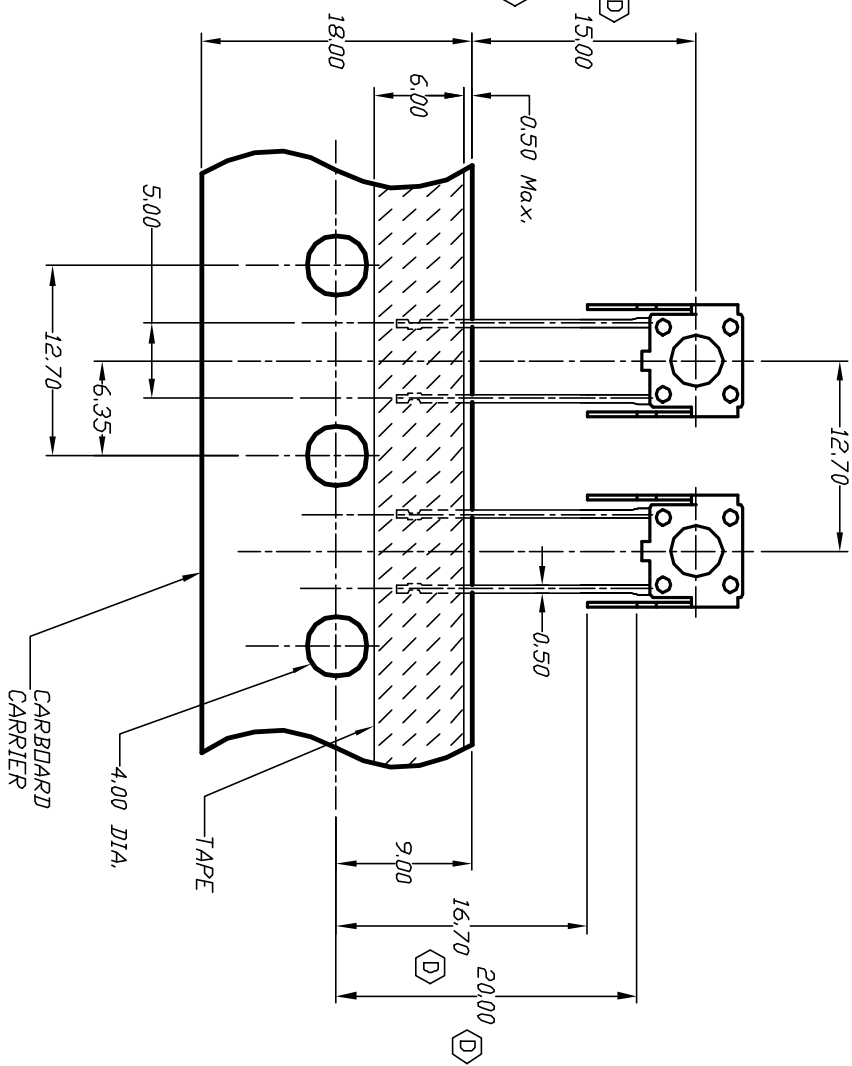
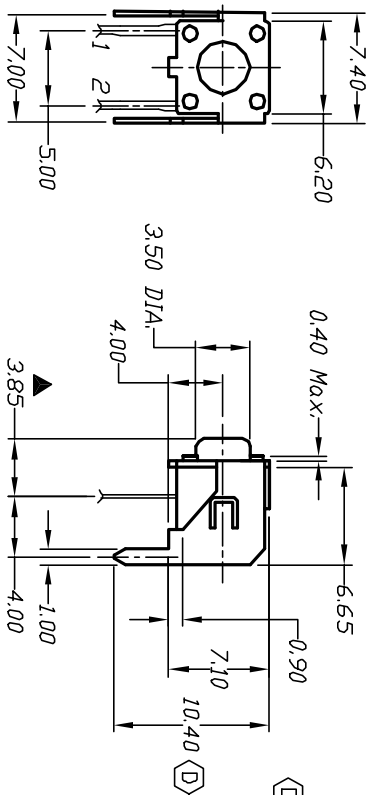


CIRCUIT: SPST

CONTACT CONFIGURATION

RECOMMEND P.C.B. LAYOUT



NOTES:

1. ALL DIMENSIONS IN MM
2. GENERAL TOLERANCE:  $0.0 \pm 0.4$   
 $0.00 \pm 0.25$
3. TERM. NOS. FOR REF. ONLY
4. CONTACT RATING: 50mA, @12VDC
5. OPERATING FORCE:  $100 \pm 50$ gf
6. TRAVEL:  $0.25 + 0.2 / - 0.1$ mm
7. CONTACT RESISTANCE: 100 milliohms Max.
8. CARRIER IS FOLDED EVERY 25 PITCHES  
(24 SWITCHES PER FOLD)
9. 700 SWITCHES PER BOX
10. DESIGNATE MAJOR DIMENSIONS

D	13229	UPDATE DIMENSIONS	6/18/03	AR
C	13210	NOTE 9 WAS 1000	6/13/03	AR
B	10148	TL 58V WAS TL 58A	3/15/99	
A	10046	RELEASED FOR PRODUCTION	12/10/98	
REV.	ECN NO.	DESCRIPTION	DATE	CHKD

THE INFORMATION CONTAINED IN THIS DOCUMENT  
IS PROPRIETARY TO E-SWITCH AND IS  
NOT TO BE COPIED OR TRANSFERRED

TITLE				
TL 58 V F100 Q				
SCALE	DATE	DR	DWG	REV
2:1	12/10/98	MM	P010583	D

**E-SWITCH®**

# Mouser Electronics

Authorized Distributor

Click to View Pricing, Inventory, Delivery & Lifecycle Information:

[E-Switch:](#)

[TL58VF100Q](#)