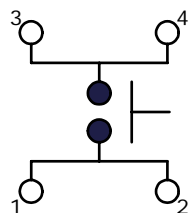


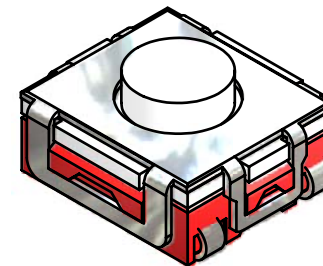
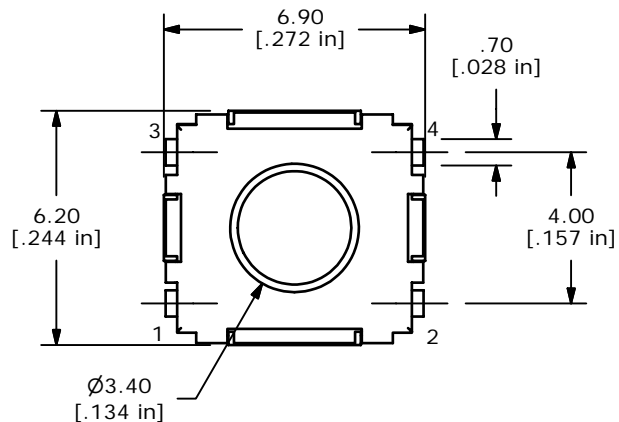
P.C.B. MOUNTING LAYOUT



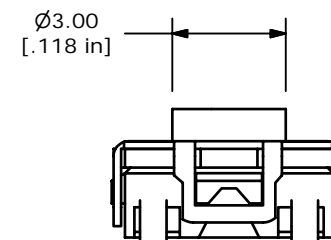
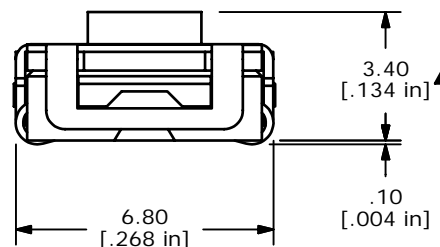
CIRCUIT: SPST

NOTES:

1. GENERAL TOLERANCE: $x.x \pm 0.4$
 $x.xx \pm 0.25$
2. RATING: 50mA@12VDC
3. TRAVEL: $0.35 \pm 0.2\text{mm}$
4. CONTACT RESISTANCE: 100m OHMS
5. LIFE CYCLES: 100,000 CYCLES
- ▲ 6. OPERATING FORCE: $260 \pm 50\text{gf}$
7. ▲ DENOTES CRITICAL PARAMETER
8. PACKAGE: TAPE AND REEL, 1600 PIECES PER REEL
9. 2002/95/EC (ROHS) COMPLIANT
- ▲ 10. CONTACT MATERIAL: SILVER



ISOMETRIC

**E-SWITCH®**

TITLE TL6700AF260QJ

SCALE 5:1

DATE 11/14/2006

DR TN

DWG P010462

REV A

THE INFORMATION CONTAINED IN THIS DOCUMENT IS PROPRIETARY
TO E-SWITCH AND IS NOT TO BE COPIED OR TRANSFERRED

Mouser Electronics

Authorized Distributor

Click to View Pricing, Inventory, Delivery & Lifecycle Information:

[E-Switch:](#)

[TL6700AF260QJ](#)