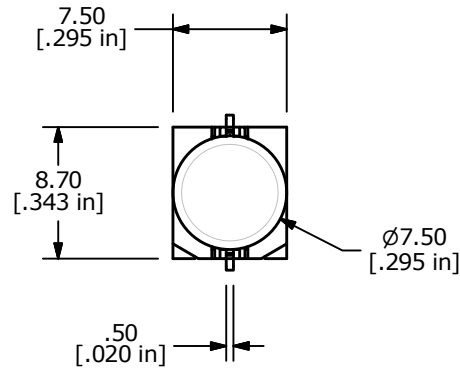
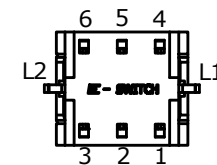
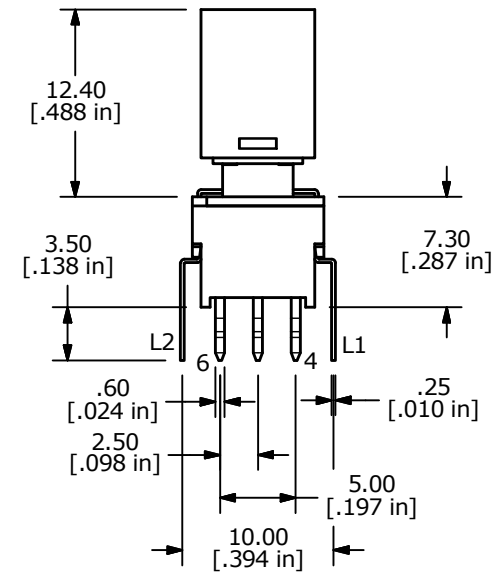
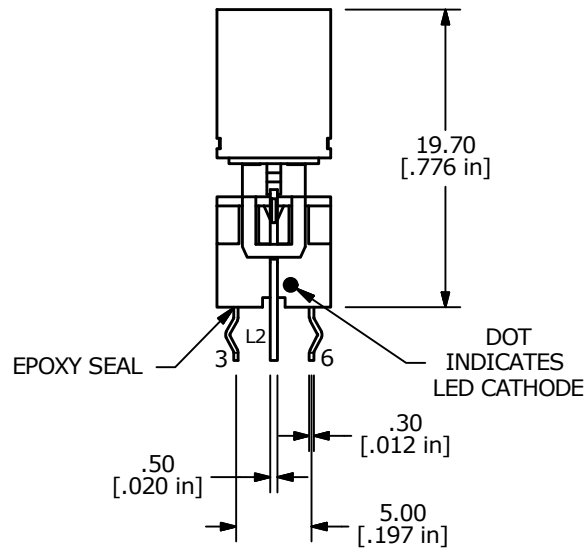
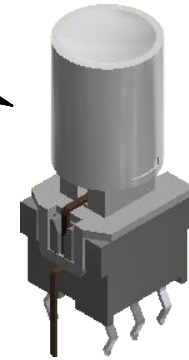


- NOTES:
1. ALL DIMENSIONS IN MM [INCH]
 2. GENERAL TOLERANCE: X.X = ± 0.4
X.XX = ± 0.25
 3. TERMINAL NUMBERS FOR REF ONLY
 4. CONTACT RATING: CURRENT: 100mA
VOLTAGE: 30 VDC
 5. OPERATING LIFE: 50,000 MAKE-AND-BREAK CYCLES
 6. INSULATION RESISTANCE: 500VDC, 100M Ω MIN.
 7. OPERATING FORCE: 250gf \pm 100gf
 8. OPERATING TEMP.: -40°C to 85°C
 - ▲ 9. TRAVEL: 0.7 \pm 0.3mm LOCK
1.8 \pm 0.3mm FULL TRAVEL
 10. CONTACT RESISTANCE: 50m Ω MAX.
 11. ▲ DENOTES CRITICAL PARAMETER.
 - ▲ 12. LED COLOR: WHITE



TRANSPARENT CAP
w/o BEZEL
with LED
ILLUMINATED WHITE



LED SPECS	UNITS	WHITE
FORWARD CURRENT	mA	20
FORWARD VOLTAGE @ 20mA	V	3.2 - 4.0
LUMINOUS INTENSITY @ 20mA	MCD	250



E-SWITCH®

A	23855	RELEASE	4/24/19	MW
REV	PCR NO	DESCRIPTION	DATE	BY

THE INFORMATION CONTAINED IN THIS DOCUMENT IS PROPRIETARY
TO E-SWITCH AND IS NOT TO BE COPIED OR TRANSFERRED

TITLE LP4EE1PBCTW

SCALE 2:1	DATE 4/24/2019	DR MW	DWG B240060	REV A
--------------	-------------------	----------	----------------	----------

Mouser Electronics

Authorized Distributor

Click to View Pricing, Inventory, Delivery & Lifecycle Information:

[E-Switch:](#)

[LP4EE1PBCTW](#)