

# SERIES LP15 SWITCHES

## PUSHBUTTON SWITCHES - ILLUMINATED



E-SWITCH™



### FEATURES & BENEFITS

- Multiple Illumination colors
- Custom marketing options
- Multiple cap sizes

### APPLICATIONS / MARKETS

- Audio/visual
- Consumer Electronics
- Telecommunications
- Medical
- Testing/instrumentation
- Computer/servers/peripherals

### MECHANICAL SPECIFICATIONS

Operating Life:	300,000 cycles
Force:	125 ± 35 grams
Travel:	1.3mm +/- 0.3mm

### ELECTRICAL SPECIFICATIONS

Contact Rating:	20VDC, 1mA
Contact Resistance (Initial Max.):	200 Ohms Max @ 1.5VDC
Insulation Resistance (min.@100V):	100Mega ohms Min @ 100VDC
Dielectric Strength (1 Min.):	250VAC
Contact Arrangement:	SPST, Normally Open

### ENVIRONMENTAL SPECIFICATIONS

Operating/Storage Temperature:	-20°C to +70°C
--------------------------------	----------------

### HOW TO ORDER

SERIES	BUTTON	BUTTON COLOR	LED COLOR	GRAPHIC
<b>LP 15</b>				
	S1 = 8.6mm Sq. R1 = 10mm Rd.	BLK = Black RED = Red WHT = White TRA = Transparent	RED = Red BLU = Blue GRN = Green YEL = Yellow WHT = White X = Without	N = No Graphic

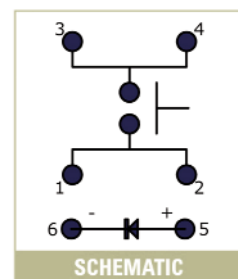
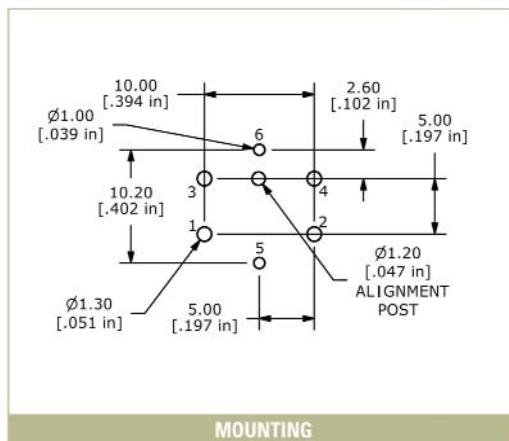
### Example Ordering Number

LP15 S1 WHT WHT N

Specifications subject to change without notice.

## LED Specifications

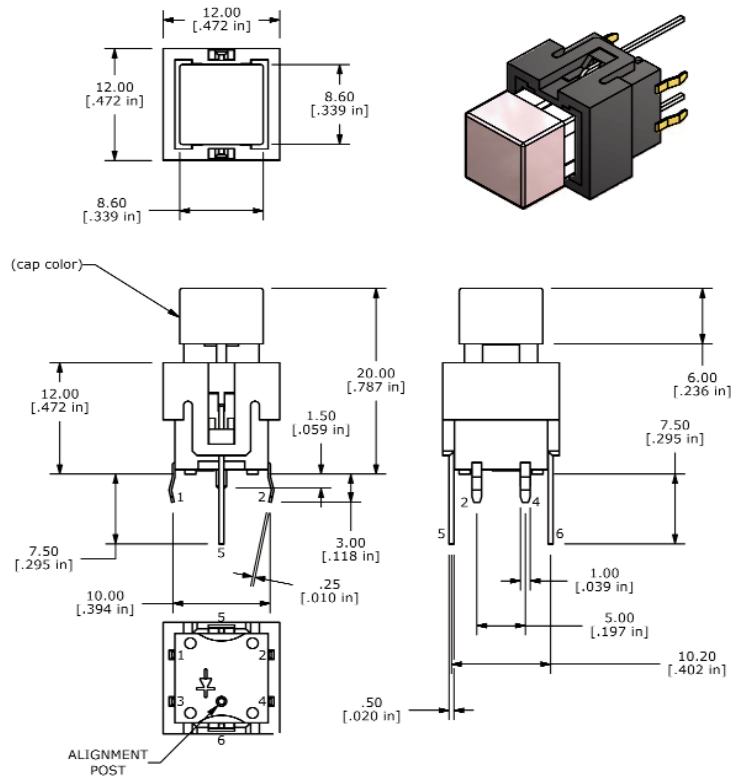
	Units	Blue	Red	Green	Yellow	White
Forward Current	mA	20mA	20mA	20mA	20mA	20mA
Forward Voltage @20mA	VDC	3.5 typ- 4.0 max	1.5 typ-2.4 max	1.7 typ-2.6 max	1.7 typ-2.6 max	3.5 typ-4.0 max
Luminous Intensity@20mA	mcd	1500 Typ	120 typ	120 typ	350 typ	2700 typ



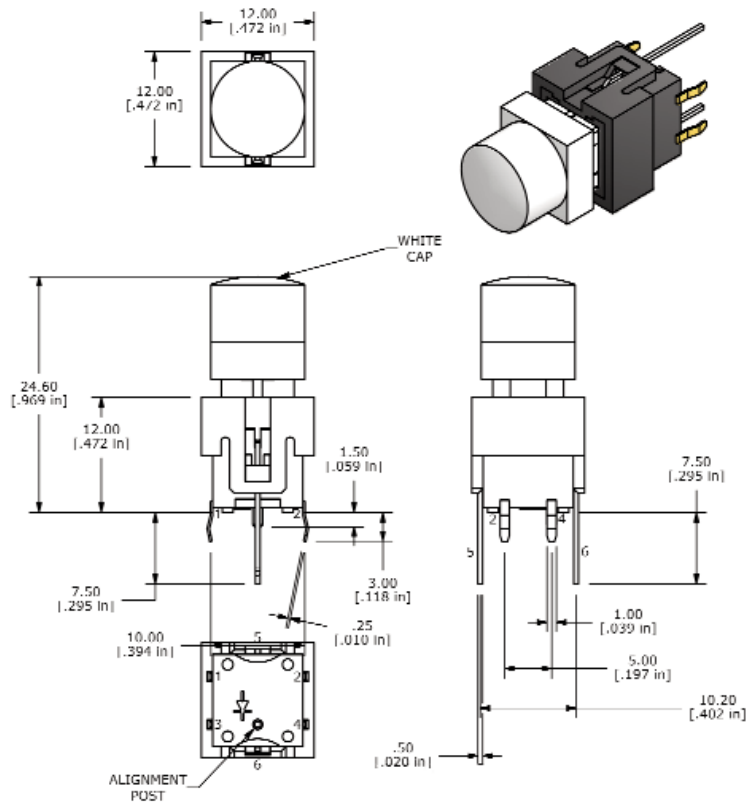
# SERIES LP15 SWITCHES

## Button Options

### S1 - 8.6mm Square



### R1 - 10mm Round



# Mouser Electronics

Authorized Distributor

Click to View Pricing, Inventory, Delivery & Lifecycle Information:

## E-Switch:

[LP15R1WHTBLU-N](#) [LP15R1WHTGRN-N](#) [LP15R1WHTRED-N](#) [LP15S1WHTBLU-N](#) [LP15S1WHTGRN-N](#)  
[LP15S1WHTRED-N](#) [LP15S1BLKGRNN](#) [LP15R1TRAWHTN](#) [LP15S1WHTYELN](#) [LP15S1WHTWHTN](#)  
[LP15R1REDRED-N](#) [LP15R1WHTWHT-N](#) [LP15R1TRARED-N](#) [LP15S1TRAYEL-N](#)