

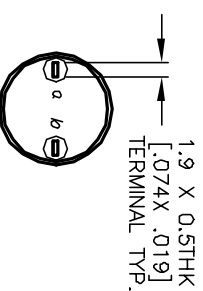
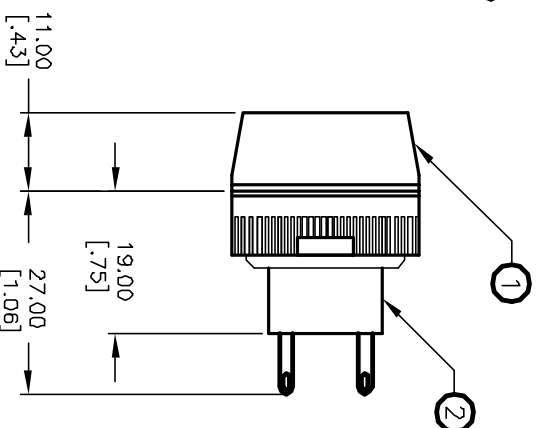
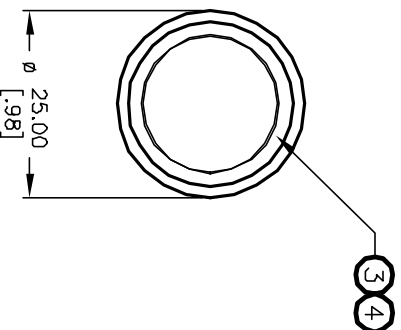
RECOMMENDED PANEL
MOUNTING

$a - (L) - b (+)$

PILOT INDICATOR

NOTES:

1. ALL DIMENSIONS IN MM [INCH]
2. GENERAL TOLERANCE: $X.X = \pm 0.4$
 $X.XX = \pm 0.25$
3. RATINGS: 5A@250V AC,
8A@125V AC
4. CONTACT MATERIAL: COPPER ALLOY W/Gold Plating
5. MECHANICAL LIFE: >100,000 Cycles
6. ELECTRICAL LIFE: >50,000 Cycles
7. INSULATION RESISTANCE: >1000 M Ω -OHMS
8. OPERATING TEMP: -20°C to 55°C
9. LAMP VOLTAGE: 6VDC (L.E.D.)



REAR VIEW
ROTATED FOR
CLARITY
ONLY

PARTS LIST			
Item	Qty.	Dwg. No.	Part No.
1	1	F051702	25mm RING FOR LA SERIES
2	1	F060600	LAPPLV10
3	1	F050416	50-004-16 GRN L.E.D.
4	1	F061254	25mm GRN LENS (TRANSPARENT)

E-SWITCH®

TITLE			
LAP PLV10 H GRN GRN (TRANSPARENT LENS)			
A	12488	RELEASED FOR PRODUCTION	10/16/02 CJB
REV.	ECN No.	DESCRIPTION	DATE CHKD
THE INFORMATION CONTAINED IN THIS DOCUMENT IS PROPRIETARY TO E-SWITCH AND IS NOT TO BE COPIED OR TRANSFERRED			
SCALE		DATE	DR
1:1		10/16/02	CJB
		DWG	REV
		XF0521P	A

Mouser Electronics

Authorized Distributor

Click to View Pricing, Inventory, Delivery & Lifecycle Information:

[E-Switch:](#)

[LAPPLV10HGRNGRN](#)