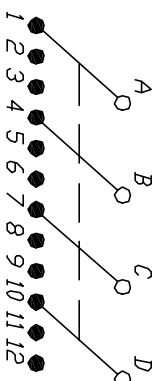
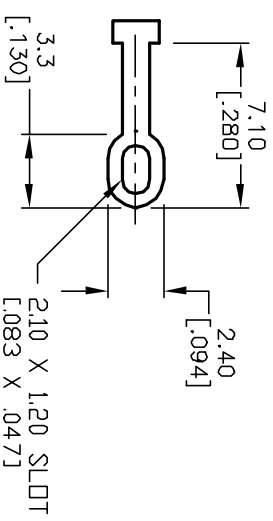


NOTES:

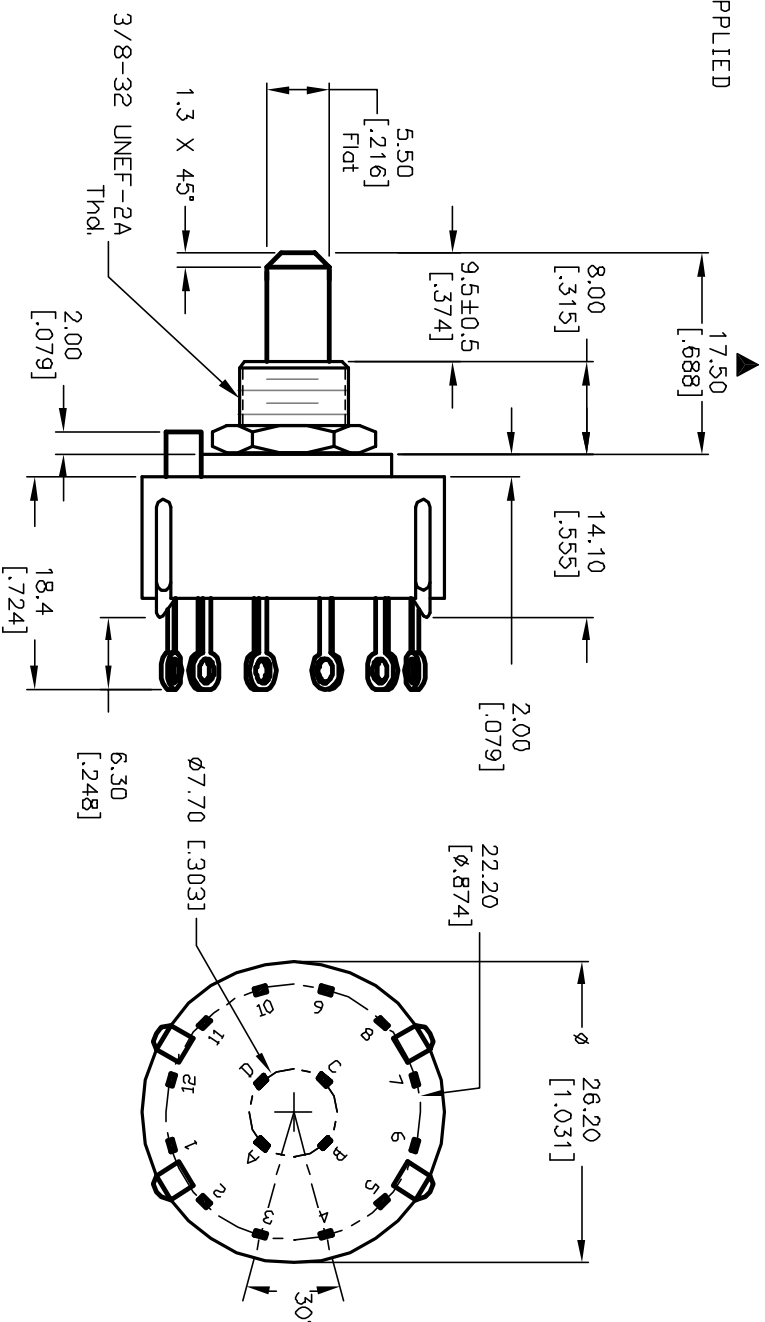
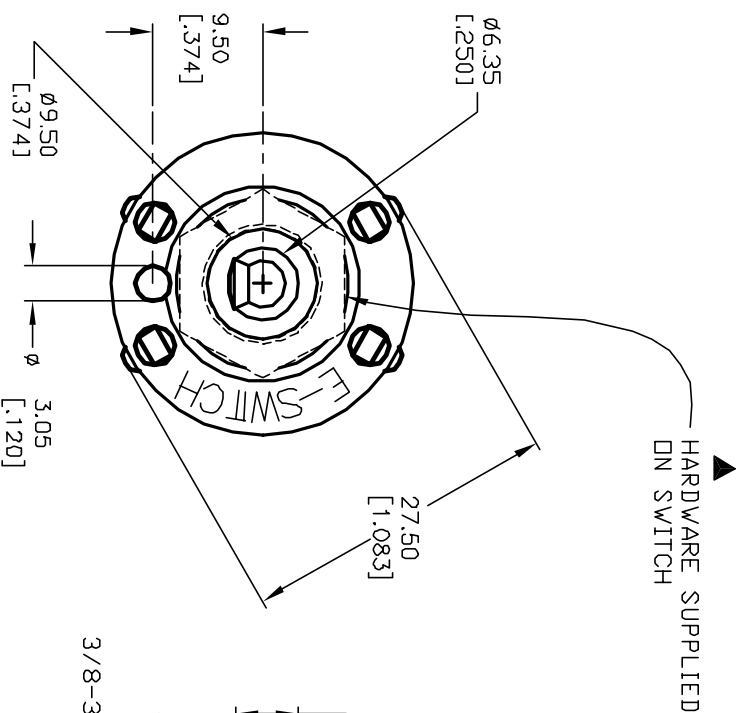
1. ALL DIMENSION IN MM [INCH]
2. GENERAL TOLERANCE: $X.X = \pm 0.4$
 $X.XX = \pm 0.25$
3. TERM. NOS. FOR REF. ONLY
4. CONTACT RATING SWITCHING: 150mA, 250V AC/DC
350mA, 110V AC/DC
5. CONTACT MATERIAL: GOLD FLASH over Silver plate
6. OPERATING FORCE: 425 \pm 100 CM/STANDARD
7. OPERATING TEMP: -30 $^{\circ}$ to 85 $^{\circ}$ C
8. CIRCUIT 4Pole: 3 POSITIONS, 30 $^{\circ}$ INDEX.
9. DIELECTRIC STRENGTH: 1000V RMS min.@SEA LEVEL.
10. \blacktriangle DESIGNATE MAJOR DIMENSIONS
11. \blacktriangle HARDWARE SUPPLIED ON SWITCH -SEE BELOW
LOCKING RING, LOCKWASHER, & HEX NUT.



CONTACT CONFIGURATION
Timing: SHORTING



TERMINATION DETAIL
SCALE 2X



E-SWITCH®				
TITLE KC-43-A-(9.5mm) 01-S-L-F				
SCALE 1.5:1		DATE 2/28/03	DR CB	DWG G510271
REV A				
B				
A	12869	RELEASED FOR PRODUCTION	2/28/03	CB
REV.	ECN No.	DESCRIPTION	DATE	CHKD
THE INFORMATION CONTAINED IN THIS DOCUMENT IS PROPRIETARY TO E-SWITCH AND IS NOT TO BE COPIED OR TRANSFERRED				

Mouser Electronics

Authorized Distributor

Click to View Pricing, Inventory, Delivery & Lifecycle Information:

[E-Switch:](#)

[KC43A9.501SLF](#)