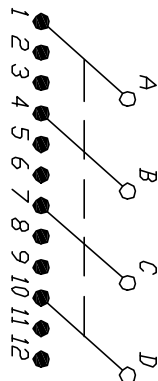


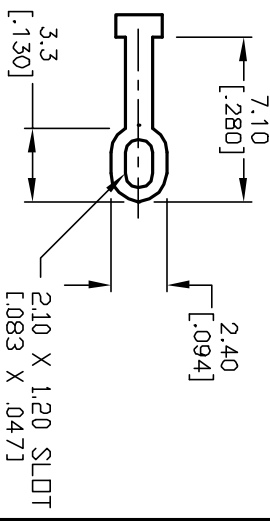
NOTES:

1. ALL DIMENSION IN MM [INCH]
2. GENERAL TOLERANCE: $X.X=\pm 0.4$
 $X.XX=\pm 0.25$
3. TERM. NOS. FOR REF. ONLY
4. CONTACT RATING SWITCHING: 150mA, 250V AC/DC
350mA, 110V AC/DC
5. OPERATING FORCE: 425 ± 100 CM/STANDARD
6. OPERATING TEMP: -30° to 85° C
7. CIRCUIT 4Pole: 3 POSITIONS, 30° INDEX.
8. DIELECTRIC STRENGTH: 1000V RMS min.@SEA LEVEL.
9. **▲** DESIGNATE MAJOR DIMENSIONS
10. HARDWARE SUPPLIED ON SWITCH -SEE BELOW
LOCKING RING, LOCKWASHER, & HEX NUT.



CONTACT CONFIGURATION

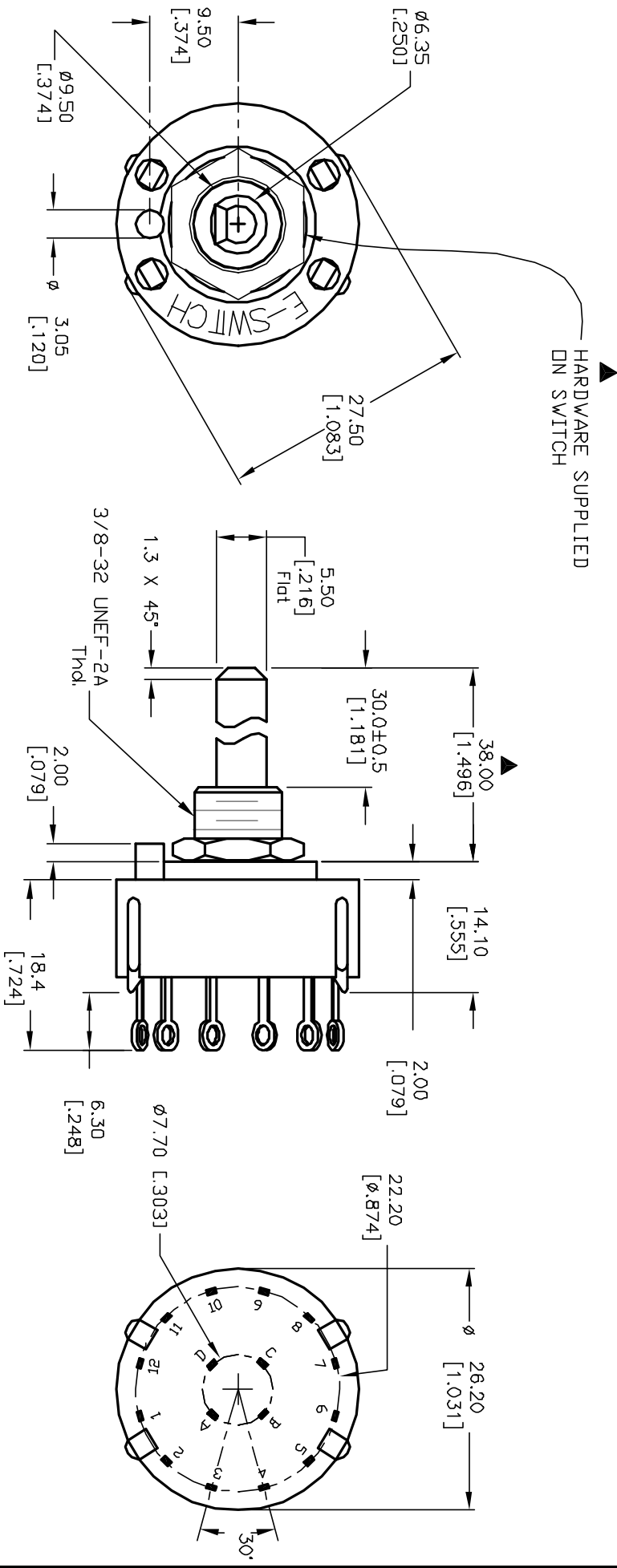
Timing: SHORTING



TERMINATION DETAIL

SCALE 2X

▲ HARDWARE SUPPLIED
ON SWITCH



E-SWITCH®

TITLE			SCALE		
KC43A30.001SL5			1.5:1		
REV.			DATE		
A			3/25/03		
REV.			DR		
ECN No.			AR		
DESCRIPTION			DWG		
DATE			G510269		
CHKD			REV		
THE INFORMATION CONTAINED IN THIS DOCUMENT			B		
IS PROPRIETARY TO E-SWITCH AND IS					
NOT TO BE COPIED OR TRANSFERRED					

Mouser Electronics

Authorized Distributor

Click to View Pricing, Inventory, Delivery & Lifecycle Information:

[E-Switch:](#)

[KC43A30.001SLS](#)