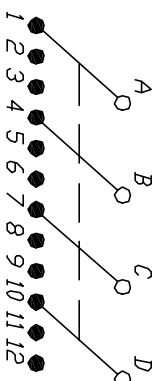
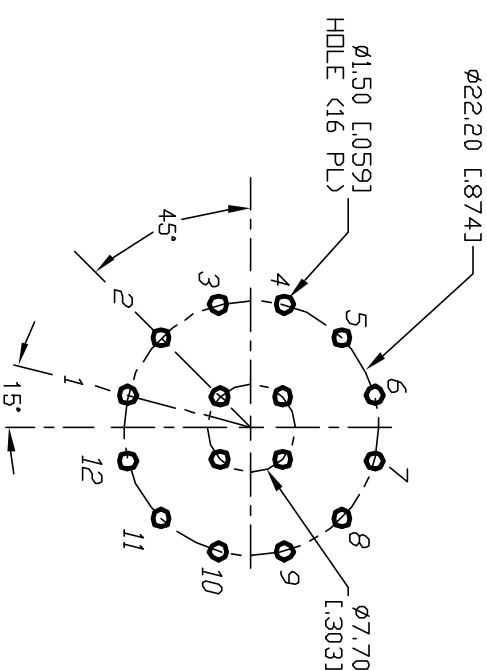


NOTES:

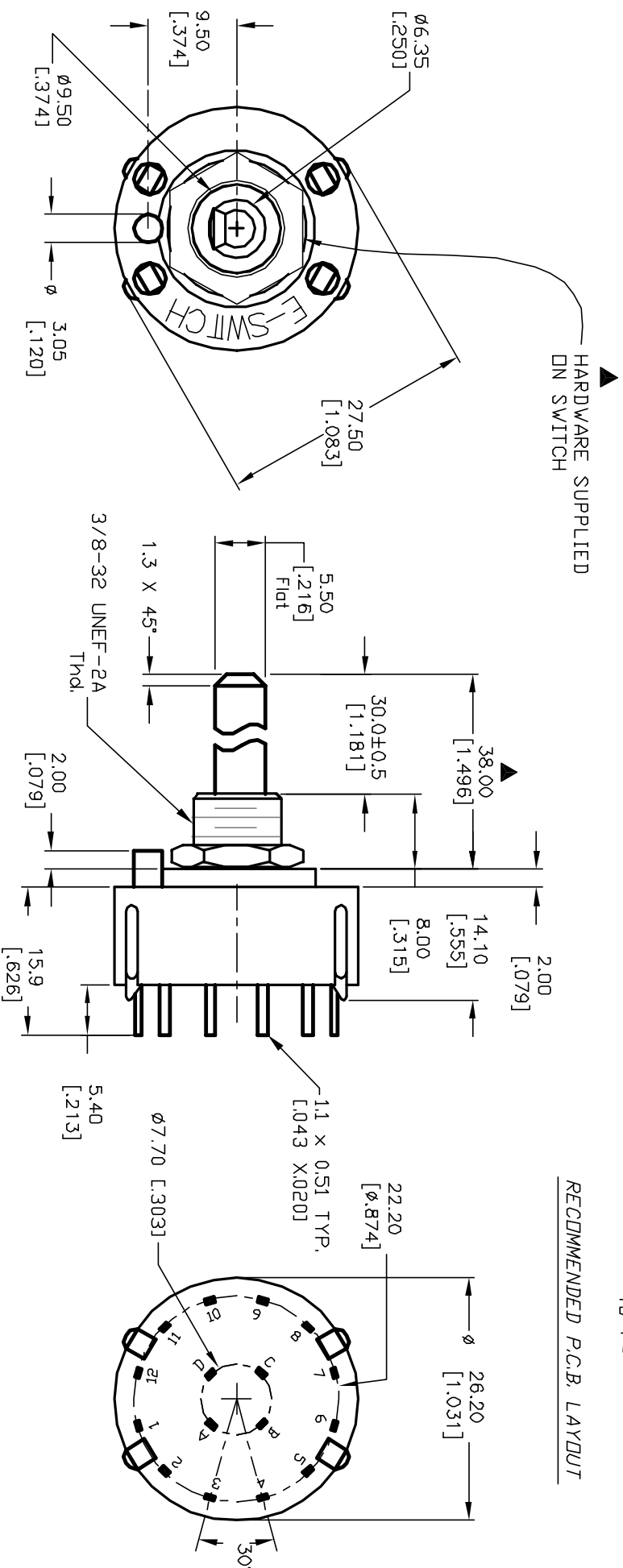
1. ALL DIMENSION IN MM [INCH]
 2. GENERAL TOLERANCE: $X.X=\pm 0.4$
 $X.XX=\pm 0.25$
 3. TERM. NOS. FOR REF. ONLY
 4. CONTACT RATING SWITCHING: 150mA, 250V AC/DC
350mA, 110V AC/DC
 5. OPERATING FORCE: 425 \pm 100 CM/STANDARD
 6. OPERATING TEMP: -30° to 85°C
 7. CIRCUIT 4 Pole: 3 POSITIONS, 30° INDEX.
 8. DIELECTRIC STRENGTH: 1000V RMS min.@SEA LEVEL.
 9. ▲ DESIGNATE MAJOR DIMENSIONS
 10. HARDWARE SUPPLIED ON SWITCH -SEE BELOW
- LOCKING RING, LOCKWASHER, & HEX NUT.



CONTACT CONFIGURATION
Timing: NON-SHORTING



RECOMMENDED P.C.B. LAYOUT



					E-SWITCH®				
					TITLE				
					KC-43-A-(30.0mm) 01-N-P-S				
SCALE		DATE		DR		DWG		REV	
1.5:1		5/29/01		CJB		G510470		B	

B	12821	REV DESC PER NEWCATALOG	2/19/03	CJB
A	11516	RELEASED FOR PRODUCTION	5/29/01	CJB
REV.	ECN No.	DESCRIPTION	DATE	CHKD
THE INFORMATION CONTAINED IN THIS DOCUMENT IS PROPRIETARY TO E-SWITCH AND IS NOT TO BE COPIED OR TRANSFERRED				

Mouser Electronics

Authorized Distributor

Click to View Pricing, Inventory, Delivery & Lifecycle Information:

[E-Switch:](#)

[KC43A30.001NPS](#)