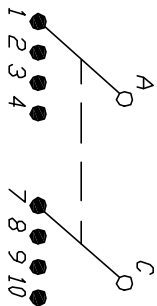


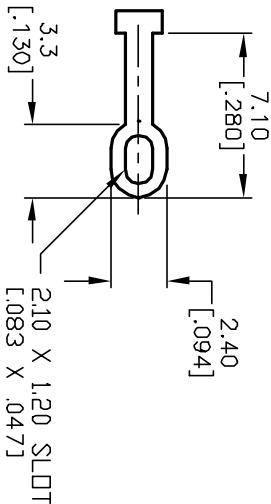
NOTES:

1. ALL DIMENSION IN MM [INCH]
2. GENERAL TOLERANCE: $X.X=\pm 0.4$
 $X.XX=\pm 0.25$
3. TERM. NOS. FOR REF. ONLY
4. CONTACT RATING SWITCHING: 150mA, 250V AC/DC
350mA, 110V AC/DC
5. CONTACT RATING (NON-SWITCHING) 5A
6. CONTACT MATERIAL: SILVER OVER COPPER ALLOY
7. OPERATING FORCE: 425 ± 100 CM/STANDARD
8. OPERATING TEMP: -30° to 85°C
9. CIRCUIT DP: 4 POSITIONS, 30° INDEX.
10. DIELECTRIC STRENGTH 1000V RMS min. @ SEA LEVEL
11. DESIGNATE MAJOR DIMENSIONS
12. HARDWARE SUPPLIED ON SWITCH-SEE BELOW
STOPRING, LOCKWASHER, & HEXNUT



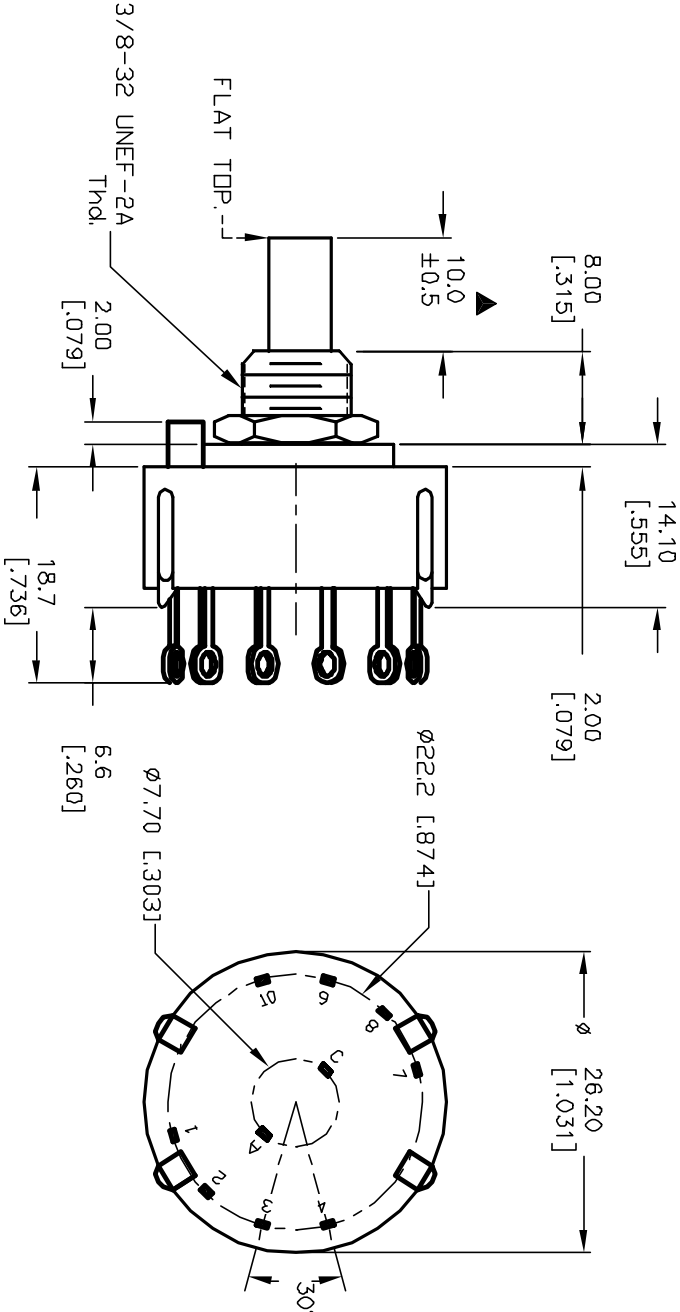
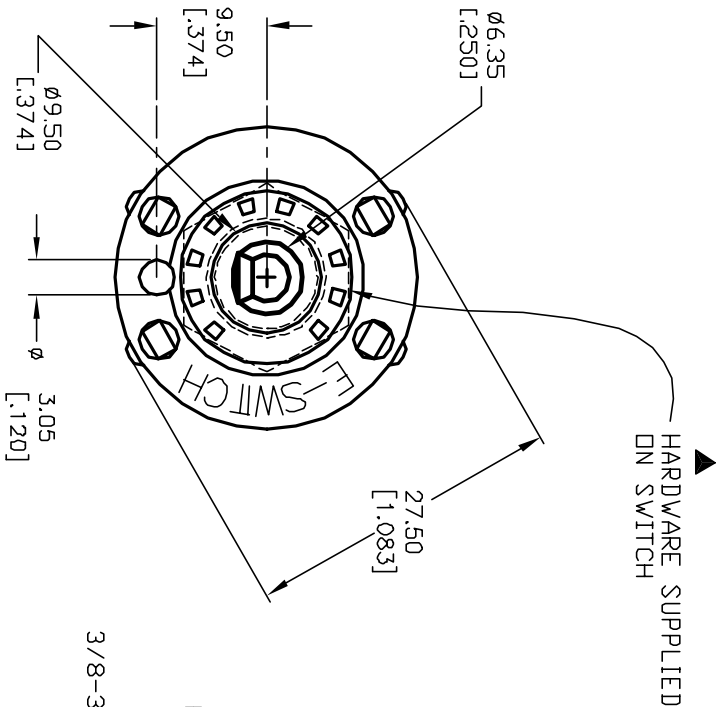
CONTACT CONFIGURATION

Timing: Non-Shorting



TERMINATION DETAIL

SCALE 2X



E-SWITCH®

B		REVISED NOTE 12	11/19/02	CJB	TITLE		
A	12579	RELEASED FOR PRODUCTION	11/19/02	CJB	KC-24A (10.0mm) 01-N-L-S		
REV.	ECN No.	DESCRIPTION	DATE	CHKD	SCALE	DATE	DR
THE INFORMATION CONTAINED IN THIS DOCUMENT IS PROPRIETARY TO E-SWITCH AND IS NOT TO BE COPIED OR TRANSFERRED					1.5:1	11/19/02	CJB
							DWG
							G510907
							REV
							B

Mouser Electronics

Authorized Distributor

Click to View Pricing, Inventory, Delivery & Lifecycle Information:

[E-Switch:](#)

[KC24A10.001NLS](#)