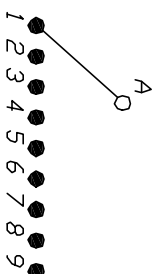
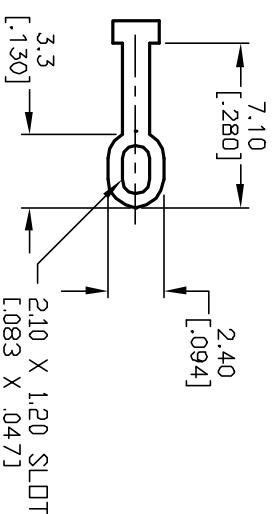


NOTES:

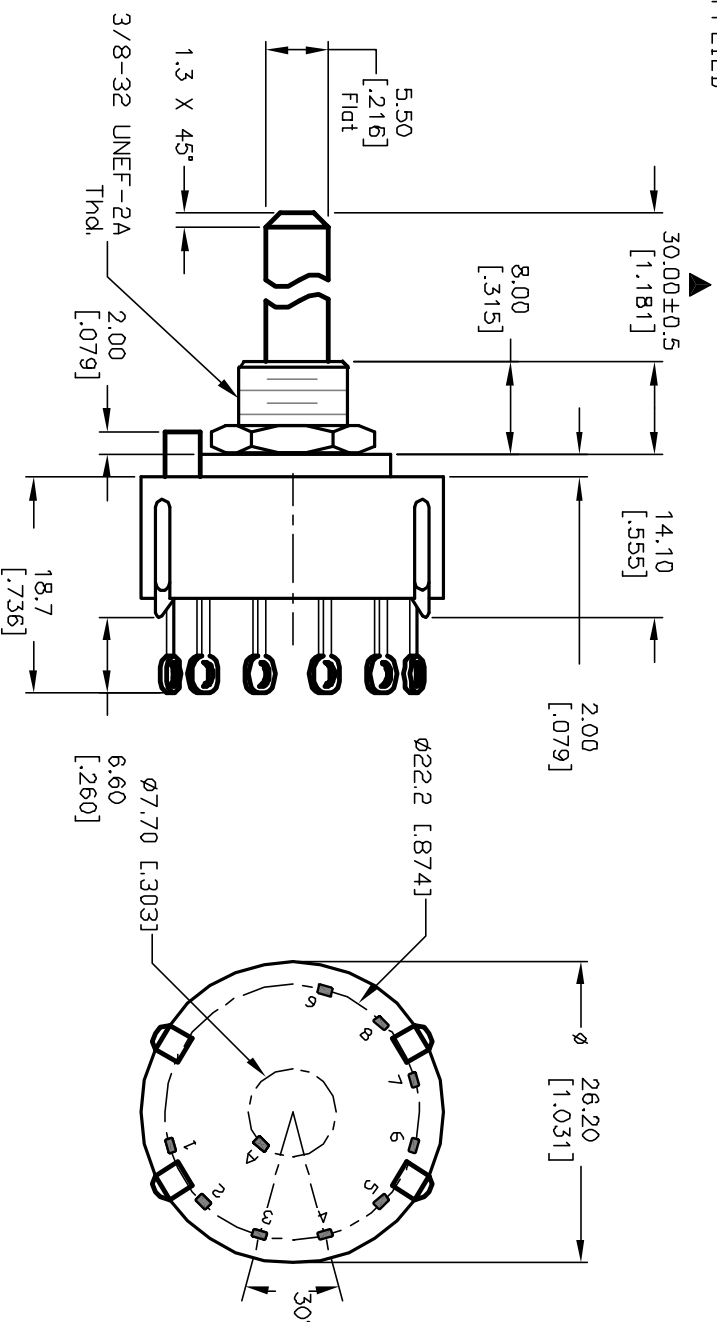
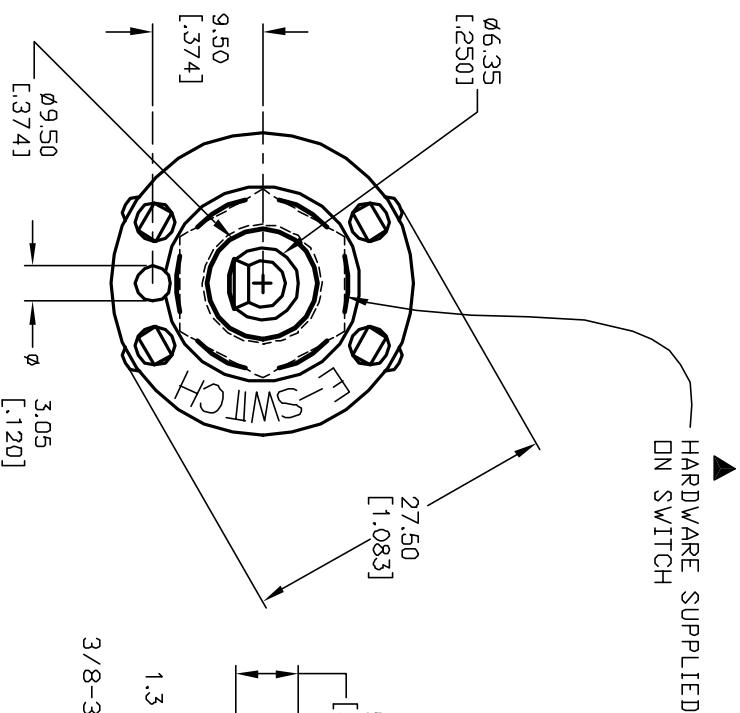
1. ALL DIMENSION IN MM [INCH]
2. GENERAL TOLERANCE: $X.X = \pm 0.4$
 $X.X.X = \pm 0.25$
- ▲ 3. CONTACT: GOLD FLASH over SILVER PLATE
4. CONTACT RATING SWITCHING: 150mA, 250V AC/DC
350mA, 110V AC/DC
5. OPERATING FORCE: 425 ± 100 CM/STANDARD
6. OPERATING TEMP: -30° to 85° C
- ▲ 7. CIRCUIT SP: 9 POSITIONS, 30° INDEX.
8. DIELECTRIC STRENGTH: 1000V RMS min.@Sea Level
9. ▲ DESIGNATE MAJOR DIMENSIONS
10. TIMING: BBM (Non-Shorting) Break Before Make.
- ▲ 11. HARDWARE SUPPLIED ON SWITCH- SEE BELOW
STOPRING, LOCKWASHER, & HEXNUT



CONTACT CONFIGURATION
(SEE NOTE 10)



TERMINATION DETAIL
SCALE 2X



<div style="text-align: center;"> <h1>E-SWITCH®</h1> </div>				
TITLE		KC-19-A (30.0mm)-01-N-L-F		
SCALE	DATE	DR	DWG	REV
1.5:1	2/25/03	CJB	G510102	A

A	12821	RELEASED FOR PRODUCTION	2/25/03 CJB
REV.	ECN No.	DESCRIPTION	DATE CHKD
THE INFORMATION CONTAINED IN THIS DOCUMENT IS PROPRIETARY TO E-SWITCH AND IS NOT TO BE COPIED OR TRANSFERRED			

Mouser Electronics

Authorized Distributor

Click to View Pricing, Inventory, Delivery & Lifecycle Information:

[E-Switch:](#)

[KC19A30.001NLF](#)