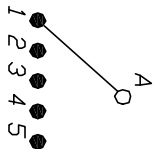


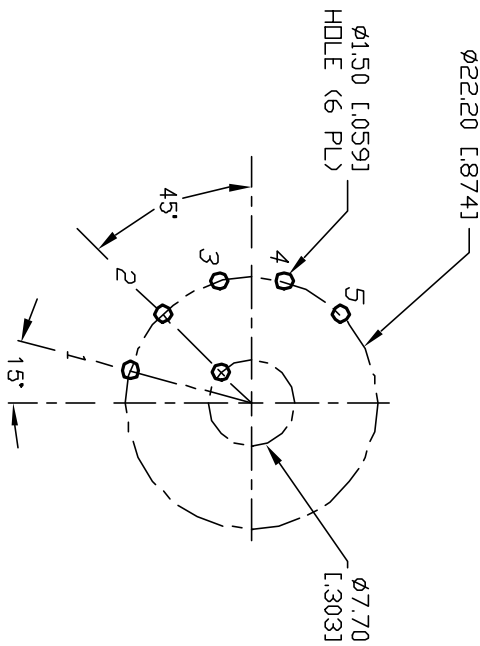
NOTES:

1. ALL DIMENSION IN MM [INCH]
2. GENERAL TOLERANCE: $X.X = \pm 0.4$
 $X.XX = \pm 0.25$
3. TERM. NOS. FOR REF. ONLY
4. CONTACT RATING SWITCHING: 150mA, 250V AC/DC
350mA, 110V AC/DC
5. CONTACT RATING (NON-SWITCHING) 5A
6. CONTACT MATERIAL:
STANDARD SILVER over COPPER ALLOY
7. OPERATING FORCE: 425±100 CM/STANDARD
8. OPERATING TEMP: -30° to 85°C
9. CIRCUIT SP: 5 POSITIONS, 30° INDEX,
10. DIELECTRIC STRENGTH 1000V RMS min. @ SEA LEVEL
11. HARDWARE SUPPLIED ON SWITCH- SEE BELOW
STOP RING, LOCKWASHER, & HEXNUT
12. ▲ DENOTES CRITICAL PARAMETER.

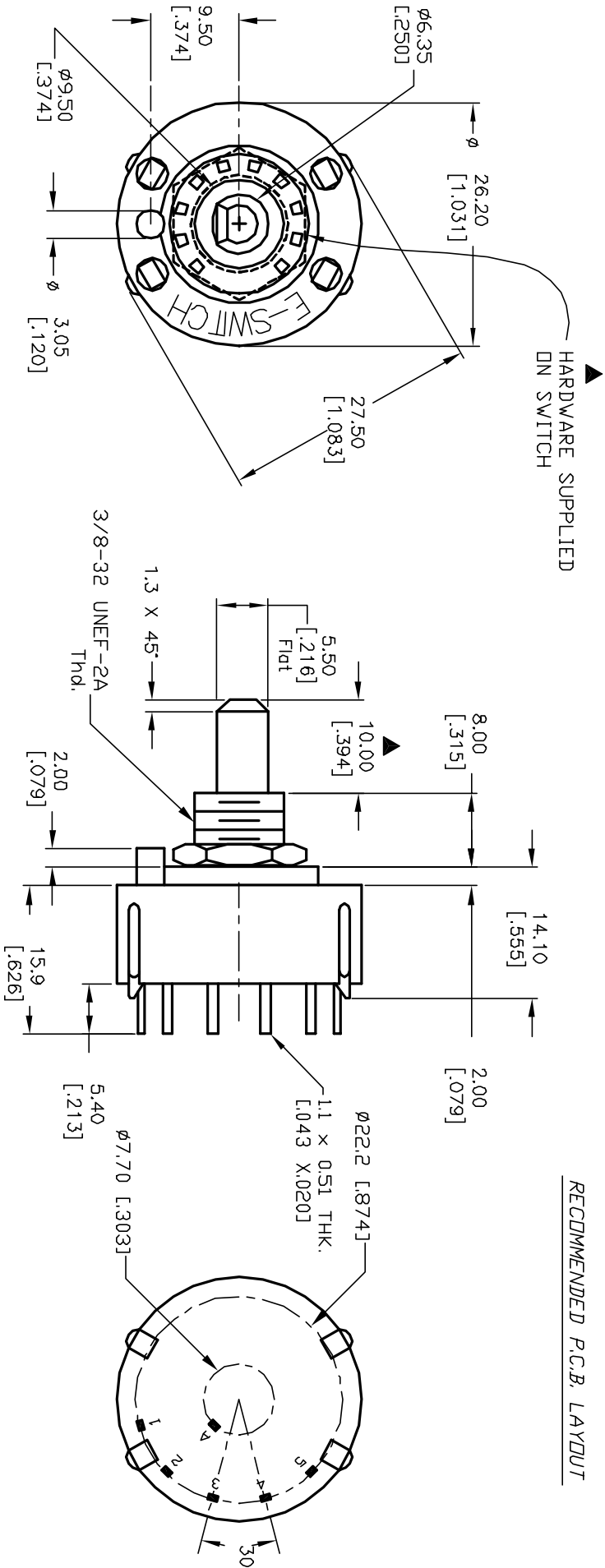


CONTACT CONFIGURATION

Timing: NON-SHORTING (BBM)



RECOMMENDED P.C.B. LAYOUT



| | | | | | | | |
|--|---------|-------------------------|---------|------------------|-------|------|---------|
| | | | | E-SWITCH® | | | |
| | | | | TITLE | | | |
| | | | | KC15A10.001NPS | | | |
| A | 13148 | RELEASED FOR PRODUCTION | 5/22/03 | AR | | | |
| REV. | ECN No. | DESCRIPTION | DATE | CHKD | | | |
| THE INFORMATION CONTAINED IN THIS DOCUMENT IS PROPRIETARY TO E-SWITCH AND IS NOT TO BE COPIED OR TRANSFERRED | | | | | | | |
| | | | | SCALE | 1.5:1 | DATE | 5/22/03 |
| | | | | DR | AR | DWG | G527542 |
| | | | | REV | A | | |

Mouser Electronics

Authorized Distributor

Click to View Pricing, Inventory, Delivery & Lifecycle Information:

[E-Switch:](#)

[KC15A10.001NPS](#)